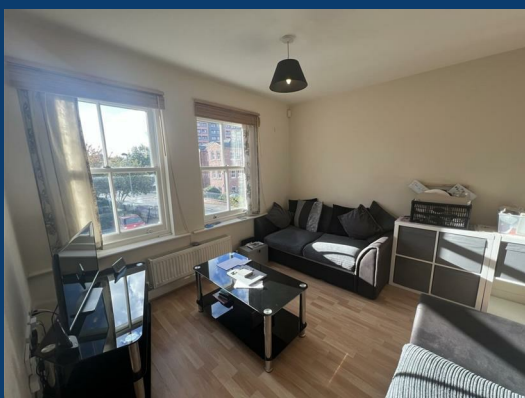




Hatters Court

Stockport



£950 Per month

2 | 2 | 1

SEND US A
MESSAGE



SPENCER
HARVEY

PASSIONATE ABOUT PROPERTY



Energy Efficiency Rating		
	Current	Potential
Very energy efficient - lower running costs		
(92 plus) A		
(81-91) B		
(69-80) C	77	81
(55-68) D		
(39-54) E		
(21-38) F		
(1-20) G		
Not energy efficient - higher running costs		
England & Wales	EU Directive 2002/91/EC	

PROPERTY DESCRIPTION

****AVAILABLE JANUARY ** FIRST FLOOR APARTMENT ** ALLOCATED PARKING** White goods included****

Located on the first floor this desirable property offers contemporary living accommodation with an open plan lounge/kitchen, fully fitted kitchen with integrated appliances, two double bedrooms one with en suite and modern family bathroom.

Externally the development has well maintained communal gardens and offers one allocated car parking space along with plenty of visitors spaces. The apartment itself boasts a central location close to Stockport Town Centre and Railway Station, ideal for the regular commuter.

Please be aware there is no lift.

Council Tax Band B + EPC C

KEY FEATURES

- 1st floor
- Two Double bedrooms
- Allocated Parking
- Visitor Parking
- Ensuite room and bathroom

LET AVAILABLE DATE:

16th January 2026

DEPOSIT:£1,096

MIN TENANCY: Add Text

LET TYPE: Add Text

FURNISH TYPE: Unfurnished

EPC RATING:

C

COUNCIL TAX

BAND:

B

