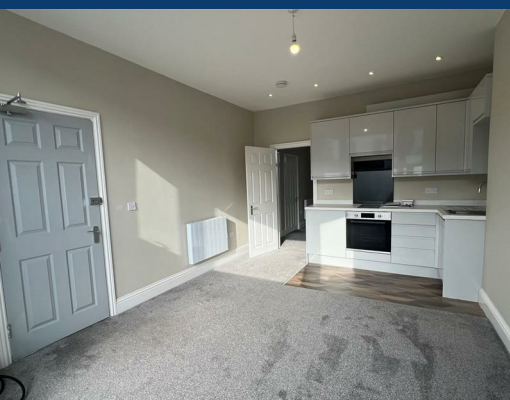




Wellington Road South

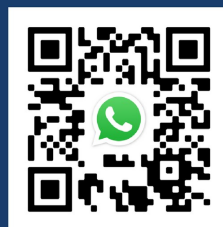
Stockport



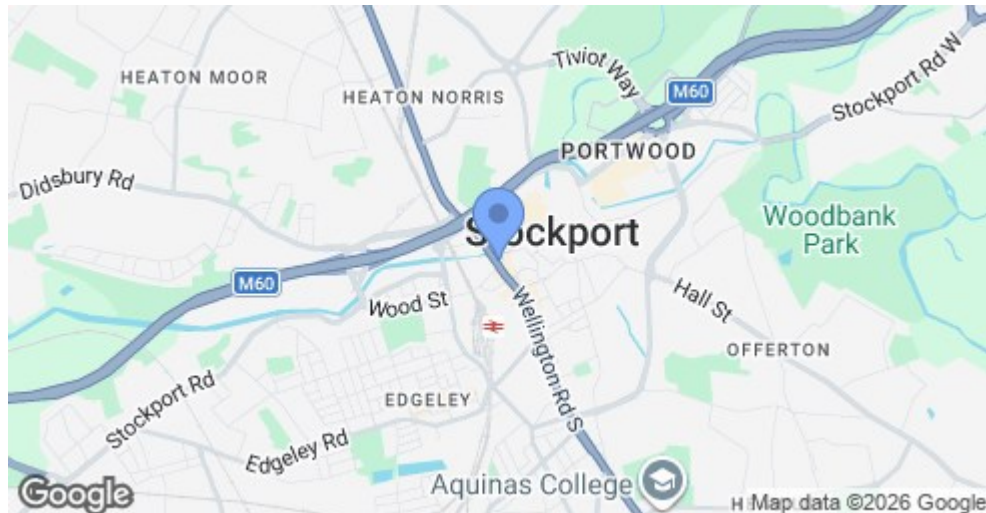
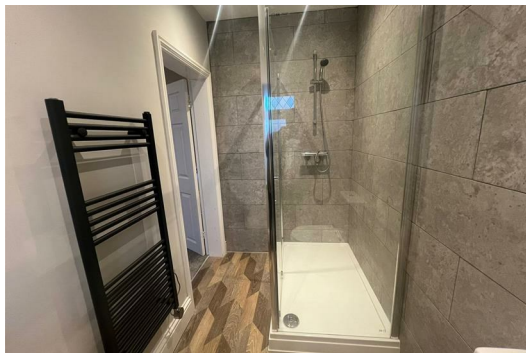
£850 Per month




SEND US A MESSAGE



PASSIONATE ABOUT PROPERTY



Energy Efficiency Rating		Current	Potential
Very energy efficient - lower running costs			
(92 plus)	A		
(81-91)	B		
(69-80)	C	75	82
(55-68)	D		
(39-54)	E		
(21-38)	F		
(1-20)	G		
Not energy efficient - higher running costs			
England & Wales		EU Directive 2002/91/EC 	

PROPERTY DESCRIPTION

Situated in a great location with excellent access to local amenities and transport links, this property offers both convenience and comfort.

Early viewing is highly recommended.

Property Features:

- Spacious double bedroom
- Modern open-plan living area
- Contemporary kitchen

KEY FEATURES

LET AVAILABLE DATE:
8th March 2026
DEPOSIT: £980
MIN TENANCY: Add Text
LET TYPE: Add Text
FURNISH TYPE: Unfurnished

EPC RATING:
C

COUNCIL TAX BAND:
A