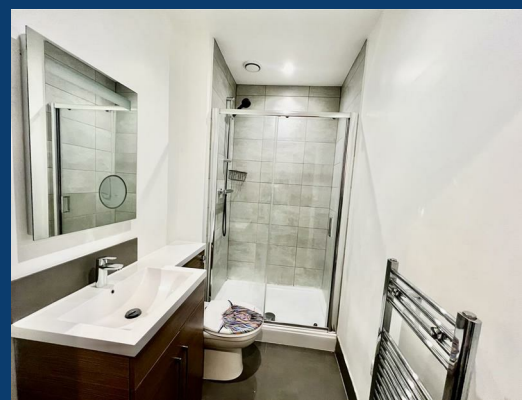




Wellington Road South

Stockport



£960 Per month

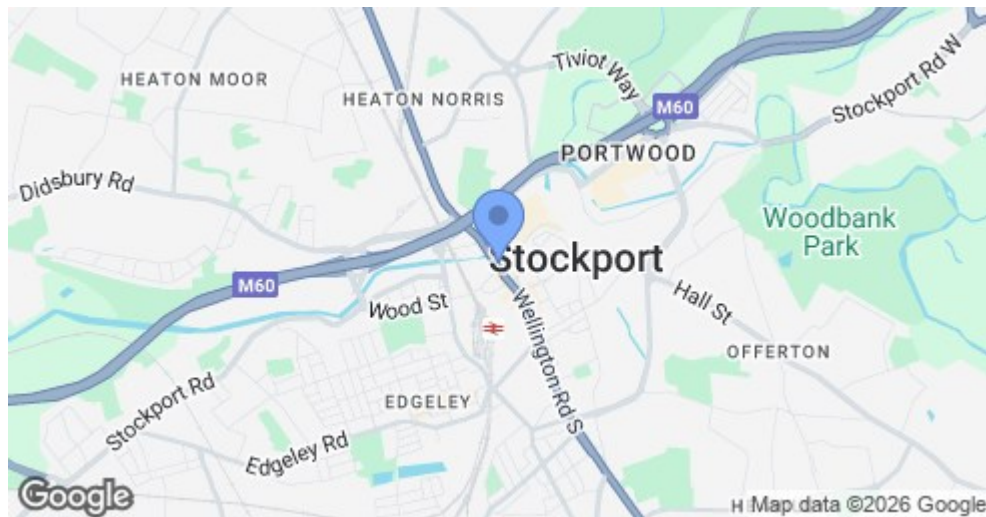
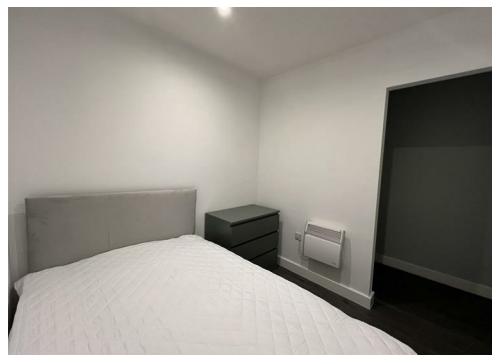
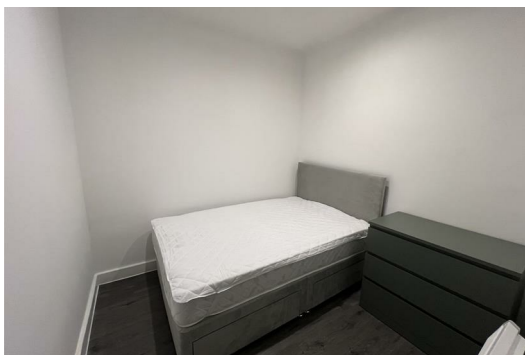
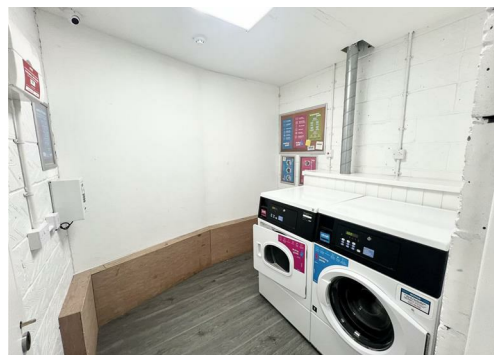


SEND US A
MESSAGE



SPENCER
HARVEY

PASSIONATE ABOUT PROPERTY



Energy Efficiency Rating		
	Current	Potential
Very energy efficient - lower running costs		
(92 plus) A		
(81-91) B		
(69-80) C	72	72
(55-68) D		
(39-54) E		
(21-38) F		
(1-20) G		
Not energy efficient - higher running costs		
England & Wales	EU Directive 2002/91/EC	

PROPERTY DESCRIPTION

AVAILABLE NOW | UTILITY BILLS INCLUDED | CENTRAL STOCKPORT | LIFT ACCESS | FURNISHED

Ideally located in the heart of Stockport, this property is perfect for commuters, with the train station right on your doorstep and the new Stockport Interchange just moments away.

Situated on the first floor, the apartment can be accessed via stairs or lift within the building.

The open-plan kitchen and living area is fully equipped with a fridge freezer, electric hob and oven, and a built-in breakfast bar with stools. There is also the added benefit of a two seater sofa bed.

The modern bathroom features a walk-in shower and has been finished to a high standard.

The bedroom is fully furnished with a bed, mattress, wardrobe, and chest of drawers, making this an ideal, ready-to-move-in home.

KEY FEATURES

- Available now
- Water and Electric Included
- Perfect for commuters
- Council Tax Band A
- Laundry room onsite

LET AVAILABLE DATE:
6th January 2025
DEPOSIT:£1,107
MIN TENANCY: Add Text
LET TYPE: Add Text
FURNISH TYPE: Part furnished

EPC RATING:
C

COUNCIL TAX BAND:
A

