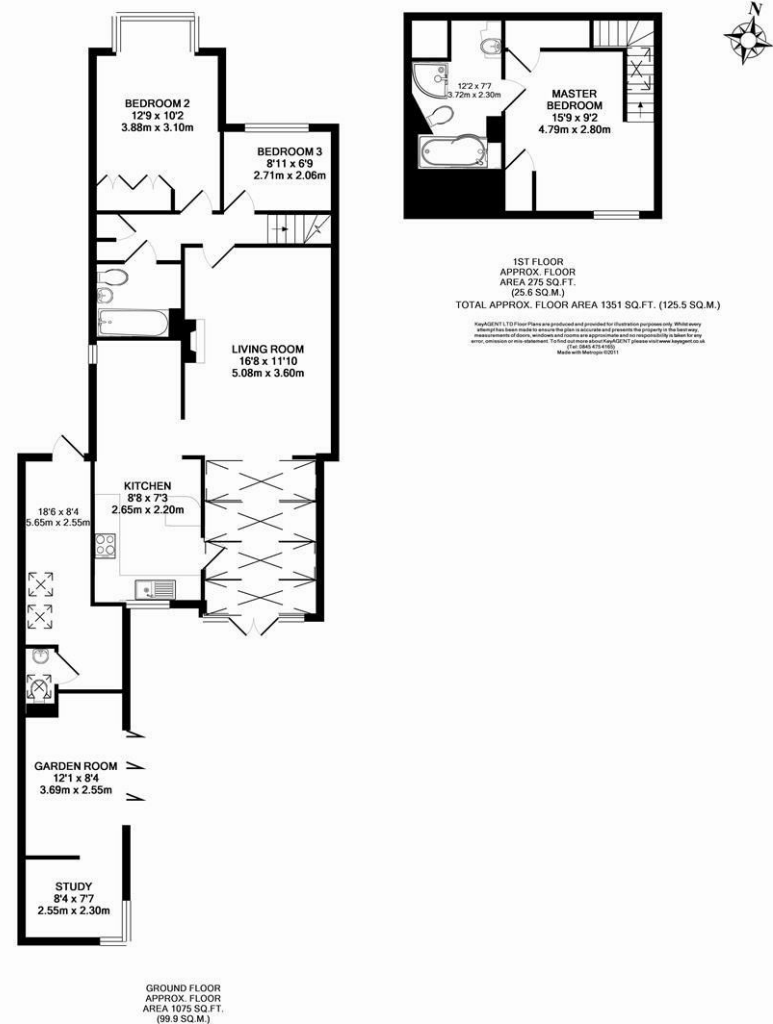




Bank Thame Road
Great Milton, OX44 7NY
£1,850 PCM

Floor Plan

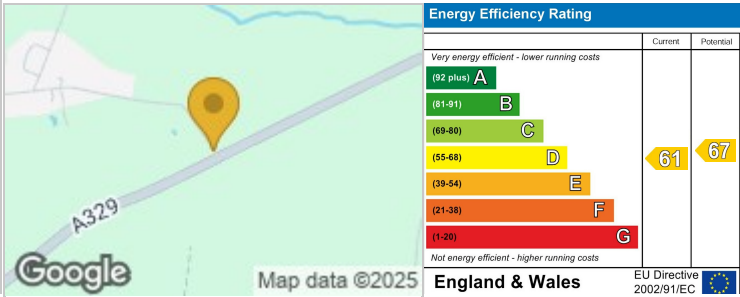


GREAT MILTON
Haddenham Station c. 7.5 Miles, Oxford c.6.5 Miles, M40 c.3 Miles

Offering Spacious and versatile accommodation, 3 reception rooms, study area, kitchen/breakfast room with range cooker, utility area and cloakroom. Three bedrooms master with en-suite. The property benefits from unspoilt views to the rear across fields while the garden has been landscaped with mature planting and provides a tranquil setting to unwind.

(Total Floor Area c.1351 sq ft)

- Available 4th July 2025
- Unfurnished
- 3 bedrooms
- 2 bathrooms
- Driveway parking for 2 cars
- Pets considered
- Good access to Oxford & M40
- Council tax band D



These particulars, whilst believed to be accurate are set out as a general outline only for guidance and do not constitute any part of an offer or contract. Intending purchasers should not rely on them as statements of representation of fact, but must satisfy themselves by inspection or otherwise as to their accuracy. No person in this firms employment has the authority to make or give any representation or warranty in respect of the property.