

west
THE PROPERTY CONSULTANCY

TO LET

Dormers Netherton Road, Appleton, Nr. Abingdon on Thames, Oxfordshire, OX13 5QW

£2,500 PCM



- AVAILABLE from 8th August 2025
- Set in private gated 0.3 acre grounds with open paddock views
- Large main reception room
- Stylish family bathroom
- Oxford c.10.6 Miles
- Just restored mid 20th Century detached edge of village house
- Contemporary 'social' kitchen space
- 4 Bedrooms (2 ground floor & 2 first floor)
- Double garage
- Didcot Parkway Station c.13.5 Miles

APPLETON
Oxford c.10.6 Miles Didcot Parkway Station c.13.5 Miles

On the rural edge of the village, a peacefully located recently refurbished mid 20th Century detached house set in 0.3 acre private gardens with open paddock views beyond. 2 Reception rooms, 3 / 4 Bedrooms. A 'social' kitchen space with just fitted contemporary cabinetry. Cloaks. Laundry. Tranquil bedrooms all of good scale (2 on the ground floor, 2 on the first floor). Stylish bathroom, New flooring. Double garaging. Gated private grounds. Village pub, Community shop. Good access to Oxford & Abingdon schools. AVAILABLE from August 8th 2025. (TOTAL FLOOR AREA: c.1852 sq ft / c.172 m²)

QUOTING RENT: £2,500pcm

THE PROPERTY

RURAL EDGE OF POPULAR VILLAGE MAKES A SPECIAL LOCATION FOR THE RENTAL OF A FAMILY HOME

Dormers

Approximate Gross Internal Area = 172.05 sq m / 1852 sq ft
(Including Outbuilding)

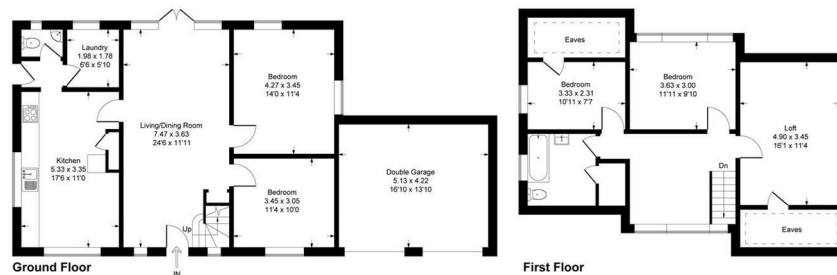


Illustration for identification purpose only, measurements approximate, and not to scale.

SITUATION

Contact: Gavin West
(t) 01865 510000 (e) gavin@west-tpc.co.uk

Directions

Take the A420 Swindon Road from Oxford and after passing The Greyhound, Besselsleigh on your right proceed on to the second stretch of dual carriageway passing over the roundabout and shortly thereafter look out for the slip road on your right leading to the turning on the far side of the dual carriageway to the village of Appleton. Proceed in to the village and at the 'T' junction turn left and proceed through the village and the subject property, Dormers, is the last property on your right before you leave Appleton.

WHAT3WORDS Co-ordinate:- [///olive.refusals.leaps](https://www.what3words.com/olive.refusals.leaps)