

COMING SOON

TO LET

63 Victoria Road, Bicester, OX26 6PH

£1,700 PCM



- AVAILABLE FROM MID JUNE 2026
- Set on a private corner plot
- 2 Reception rooms
- Fully equipped Kitchen
- Wide frontage with ample parking.
- Mid 20th Century semi-detached house
- Walking distance from central Bicester
- 3 Bedrooms served by a bath / shower room
- Cloaks & Seperate Laundry
- London Marylebone Station c.68 minutes M40 Junc 9 c.2.4 miles

#### BICESTER

London Marylebone Station c.68 minutes M40 Junc 9 c.2.4 miles  
Oxford c.13.9 miles

Located just off central Bicester but still within walking distance, a refurbished mid 19th Century 3 bedroom semi-detached house on a private corner plot of good size. 2 reception rooms with a sitting / garden room of good scale opening on to the private gardens. A fully equipped kitchen. Cloaks and separate laundry. 3 bedrooms served by a bath / shower room. Wide frontage with ample off road parking. Private garden. (TOTAL FLOOR AREA: c.1044 sq ft / c.97 m2)

QUOTING RENT: £1,700pcm

## THE PROPERTY

ON A GOOD SIZED CORNER PLOT A NEAR CENTRALLY LOCATED 3 BEDROOM SEMI DETACHED HOUSE

#### 63 Victoria Road Bicester, OX26 6PH

Approximate Gross Internal Area 96.98 sq.m / 1044 sq.ft

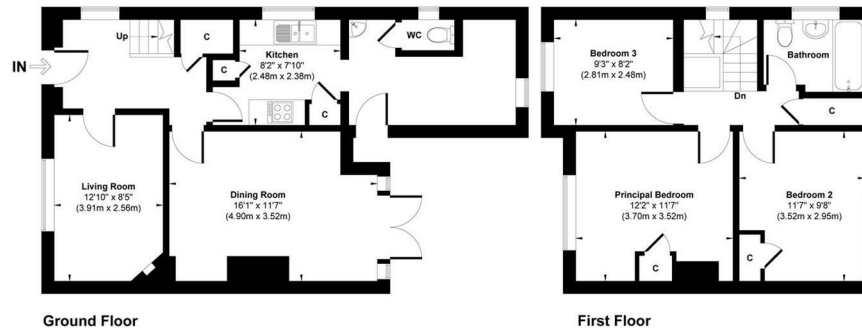


Illustration for identification purpose only, measurements approximate and not to scale.

## SITUATION

Contact: Gavin West  
(t) 01865 510000 (e) [gavin@west-tpc.co.uk](mailto:gavin@west-tpc.co.uk)

## Directions

From the M40 Junction 9 proceed into Bicester passing the Bicester Village access on your right and continuing straight on along passing over the mini-roundabout and continue along Kings End and take the 2nd turning right which is a continuation of Kings End and this leads in to Church Street. Continue straight on to where the road forks after the right hand turning to Chapel St and take the left hand fork of the Market Place and follow this around to the end bearing right in to London Road and at the roundabout turn left in to Launton Road and then take the first turning left in to Victoria Rd and No.63 is the first house on your right behind the high evergreen trees. WHAT3WORDS Co-ordinate: ///league.lions.also

216 Banbury Road, Oxfordshire, OX2 7BY

Tel: 01865 510000 Email: [oxford@west-tpc.co.uk](mailto:oxford@west-tpc.co.uk) <https://www.west-tpc.co.uk>