

west
THE PROPERTY CONSULTANCY

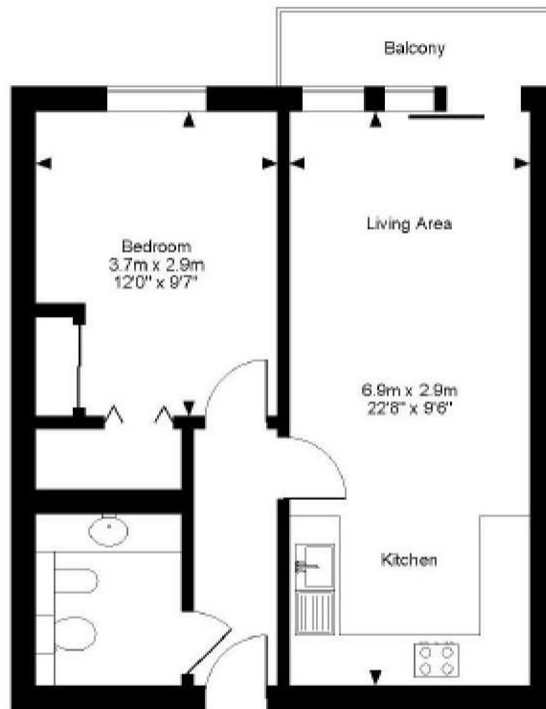
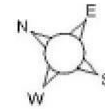


TO LET

13 Stream Edge, Fisher Row, Oxford, Oxfordshire, OX1 1HT

£1,795 PCM

The Stream Edge, Fisher Row, Oxford
Approximate Gross Internal Area
442 Sq Ft/41 Sq M



FOR ILLUSTRATIVE PURPOSES ONLY - NOT TO SCALE

The position & size of doors, windows, appliances and other features are approximate only.
© ehouse. Unauthorised reproduction prohibited. Drawing ref. dig/8179223/DMC

THE PROPERTY

OXFORD CITY

Oxford City Centre c.0.6miles, Oxford Train Station c.0.4miles

A 1 bedroom apartment offering tranquil river views just a stroll from the city. This tasteful apartment compromises an entrance hall, open plan fully integrated kitchen/dining/living space leading onto your own private outside second floor balcony. On top of this a double bedroom with generous storage and separate bathroom - a highly desirable location.

- Landmark City Centre Address
- Contemporary Furnishings
- 1 Bedroom
- Glass Balustraded Balcony
- Landscaped communal gardens
- Overlooking Castle Mill Stream
- High end kitchen cabinetry
- 1 Bathroom
- Video Entry System
- Short Walk to Oxford Rail Station

Directions

From St Giles turn right at the Randolph Hotel into Beaumont Street, continue over the traffic lights onto the Hythe Bridge Street, at the traffic lights turn left and go straight over onto Hollybush Row, take the first turning on your left onto St Thomas Street and the Stream Edge development is situated on the left hand side.

216 Banbury Road, Oxfordshire, OX2 7BY

Tel: 01865 510000 Email: oxford@west-tpc.co.uk <https://www.west-tpc.co.uk>

