

west
THE PROPERTY CONSULTANCY

TO LET

The Loft Rascarrel House, Main Street, West Hanney, Oxfordshire, OX12 0LH

£1,250 PCM



- Exclusive Village Setting
- Peaceful Village Surroundings near The Green
- Well Fitted Kitchen
- Bathroom
- Fixed Utility Charge £250pcm (excluding Bottled Gas)
- Spectacular Accommodation
- Glorious Reception Room
- Double Bedroom
- Study Area
- Double Glazed

WEST HANNEY

Didcot Rail Station c8.4 miles Wantage c4.4 miles Abingdon c6.5 miles Oxford c11.6 miles Milton Park c6.7 miles

This beautiful first floor flat offers bright, light and airy accommodation in an exclusive village location within the secluded grounds of a detached period village home. In the very heart of the village and yet tucked away and peaceful, the property is within a short walk of a great thatched pub and an Indian restaurant as well as sports grounds with tennis courts and a community village shop.

Ground floor entrance hall with stairs to first floor. Magnificent main room, c27ft in length with spectacular cathedral window at one end. This area serves well as dining room, sitting room, study and kitchen with an excellent range of fitted units.

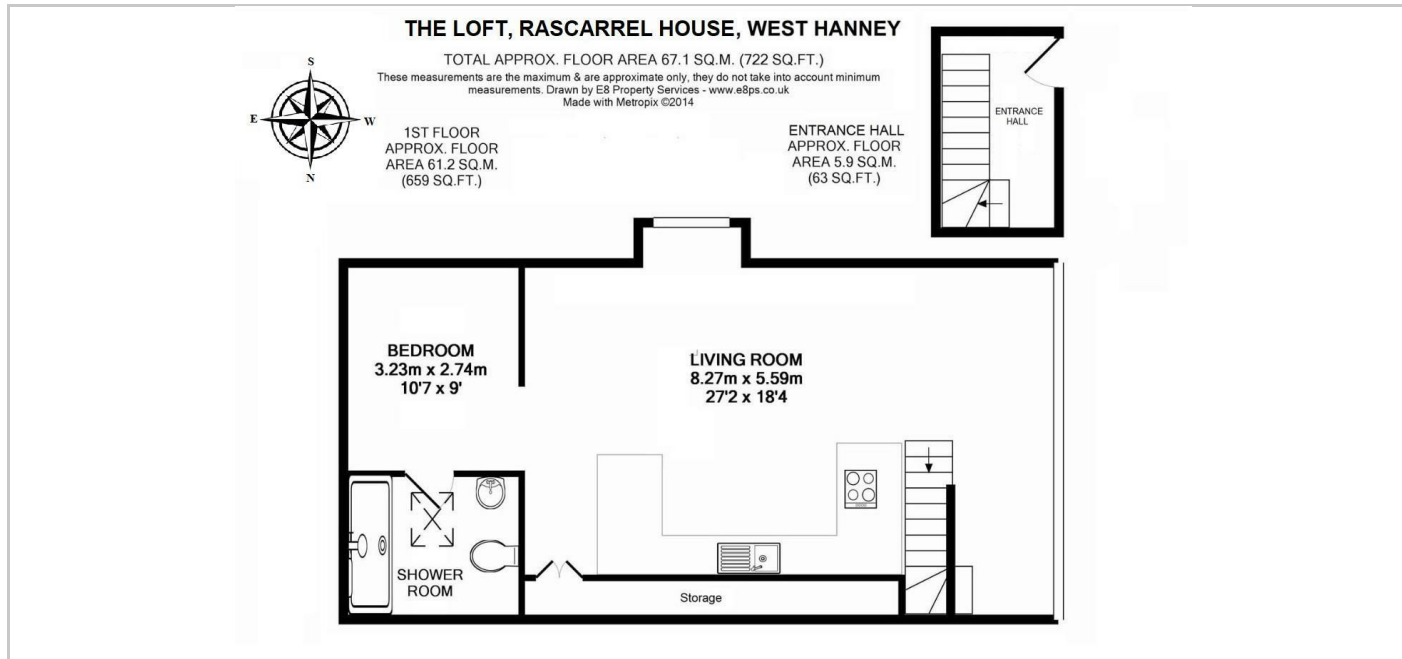
THE PROPERTY

A FABULOUS INDIVIDUAL COACH HOUSE FLAT, 'THE LOFT' IN A TRANQUIL VILLAGE SETTING WITH OUTSIDE SPACE, WELL PLACED FOR EASY ACCESS TO WANTAGE, ABINGDON AND EXCELLENT ROAD & RAIL LINKS

One Bedroom, 27ft Reception Room, Outside Space & Parking

Monthly fixed charge of £250 to cover all utilities including council tax, electricity & broadband but not bottled gas

AVAILABLE LATE OCTOBER 2025



Directions

DIRECTIONS: From Wantage take the A338 towards Oxford and approximately 1 mile after the Williams F1 roundabout at Grove, turn left into East Hanney and follow the road through to West Hanney. After passing the Green with the war memorial the driveway to the property will be found on the right hand side immediately after the turning to North Green.

What3words:///rewarded.vibes.laughs

SITUATION

216 Banbury Road, Oxfordshire, OX2 7BY

Tel: 01865 510000 Email: oxford@west-tpc.co.uk <https://www.west-tpc.co.uk>