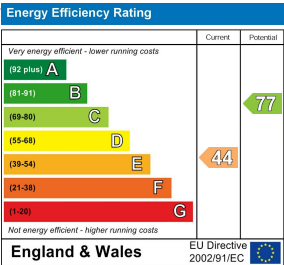
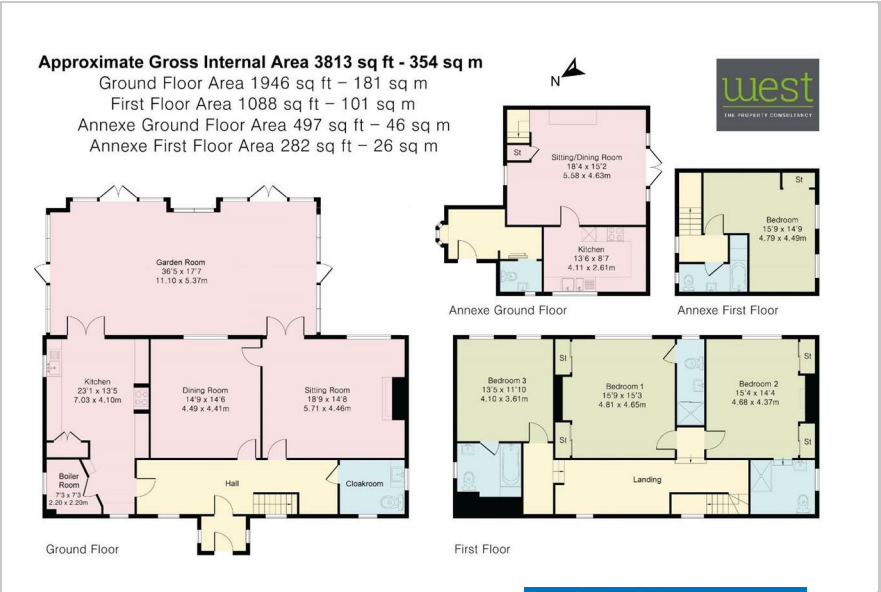


Nightingale Farm , Faringdon, SN7 7PR
Guide Price £1,250,000



Floor Plan



DIRECTIONS: From the centre of Fernham village follow the B4508 towards Longcot and after about 700 metres, just as the road begins to rise, turn left onto the gravel driveway with signs to Nightingale Farm and Manor Barn. When the driveway forks, keep to the left and you will arrive at the farmhouse. What3words:///bottle.disco.slate

A BEAUTIFULLY PRESENTED DETACHED PERIOD FARMHOUSE SET IN circa 8.25 ACRES WITH DETACHED COTTAGE ANNEXE AND SPECTACULAR VIEWS TO THE DOWNS AND WHITE HORSE HILL. - Spectacular value Main House c3034sq ft (282sq m) 2 Storey Cottage Annexe c779sq ft (c72sq m)
Total c 3813sq ft (354sq m)
Additional Land Available by Separate Negotiation

Accommodation

- Detached 18th Century Farmhouse in circa 8.25 acres
- Further c.7.75 acres with lake available by separate negotiation
- Open Views to The Downs and White Horse Hill
- Tranquil Setting at the end of long private drive
- Detached Cottage Annexe c779sq ft (c.72sq m)
- Main House with 3 Generous Bedrooms & 3 Bathrooms
- Spectacular 640sq ft (59sq m) South Facing Garden Room
- Very well placed for St Hugh's & Pinewood Prep Schools
- Presented in Pristine Condition - 4 Beds - 4 Bath - 4 Reception
- A Beautiful House, Annexe, Land, Views & Rural Tranquility - Who could wish for more?



These particulars, whilst believed to be accurate are set out as a general outline only for guidance and do not constitute any part of an offer or contract. Intending purchasers should not rely on them as statements of representation of fact, but must satisfy themselves by inspection or otherwise as to their accuracy. No person in this firm's employment has the authority to make or give any representation or warranty in respect of the property.