



dc  
david conway  
Established 1992  
FOR SALE  
020 8422 5222  
www.davidconway.co.uk

Auction Guide £700,000 Treve Avenue  
Harrow, HA1 4AJ

 4  2  2  E

dc  
david conway  
SALES · LETTINGS · MANAGEMENT · MORTGAGES · LAND & NEW HOUSING



- Semi Detached House
  - Four Bedrooms
  - Reception Room
  - Separate Dining Room
  - Fitted Kitchen
- Family Bathroom & En Suite
  - Garden
- Being sold via 'Secure Sale'

- Immediate 'exchange of contracts' available

- Being Sold via Secure Sale online bidding. Terms & Conditions apply. Starting Bid £700,000

Being Sold via Secure Sale online bidding. Terms & Conditions apply. Starting Bid £700,000

This property will be legally prepared enabling any interested buyer to secure the property immediately once their bid/offer has been accepted. Ultimately a transparent process which provides speed, security and certainty for all parties.

Located in the sought-after Treve Avenue, Harrow (HA1 4AJ), this charming four-bedroom halls-adjointing semi-detached home with own drive is perfect for families seeking space, convenience, and excellent transport links. The property features two reception rooms, a modern fitted kitchen, a family bathroom plus en-suite, and off-street parking. A standout feature is the expansive rear garden with two versatile outbuildings, ideal for a home office or gym. Just 0.6 miles from Harrow-on-the-Hill Station, it offers easy access to central London, while being close to top schools like Whitmore High School and Vaughan Primary. With a vibrant shopping centre, leisure facilities, and local amenities nearby, this freehold property is a fantastic opportunity for buyers looking for a spacious and well-connected family home.

**Local Authority: Harrow**  
**Council Tax Band: E**  
**Tenure: Freehold**







## INTERNALLY

This is a substantial halls adjoining four bedroom semi detached house spread across three floors measuring 1876sq/ft. The front door leads into porch area with door into the hallway and stairs to the first floor landing. Doors off the hallway lead into a bright and airy reception room with bay window, a dining room with sliding patio doors providing access to the garden, and a modern kitchen compromising of matching wall and base units, gas hob with extractor fan over, built in double oven and there is also a door providing access to the garden.

The first floor comprises three well-proportioned bedrooms, a family bathroom and an additional WC for convenience. The second floor boasts a generous loft bedroom with an en-suite, providing a private retreat.

## EXTERNALLY

Off street parking multiple cars.

Additionally, the property includes a separate outhouse with two rooms and a WC. An additional out house ideal for extra storage, a home office, or a gym.

## LOCATION

Treve Avenue is a particularly sought-after road, just 0.6 of a mile to Harrow's busy shopping centre, cinema and Harrow on the Hill Metropolitan Line and Chiltern Line station with easy access to central London. There are plenty of local schools in the area to include Whitmore High School 0.2 of a mile away and Vaughan Primary School 0.6 of a mile away.

## ADDITIONAL INFORMATION

Being Sold via Secure Sale online bidding. Terms & Conditions apply. Starting Bid £700,000  
Council Tax Band E - £2.928.27

## AUCTIONEERS ADDITIONAL INFORMATION

Pattinson Auction are working in Partnership with the marketing agent on this online auction sale and are referred to below as 'The Auctioneer'.

This auction lot is being sold either under conditional (Modern) or unconditional (Traditional) auction terms and overseen by the auctioneer in partnership with the marketing agent.

The property is available to be viewed strictly by appointment only via the Marketing Agent or The Auctioneer. Bids can be made via the Marketing Agents or via The Auctioneers website.

Please be aware that any enquiry, bid or viewing of the subject property will require your details being shared between both any marketing agent and The Auctioneer in order that all matters can be dealt with effectively.

The property is being sold via a transparent online auction.

In order to submit a bid upon any property being marketed by The Auctioneer, all bidders/buyers will be required to adhere to a verification of identity process in accordance with Anti Money Laundering procedures. Bids can be submitted at any time and from anywhere.

Our verification process is in place to ensure that AML procedure are carried out in accordance with the law.

The advertised price is commonly referred to as a 'Starting Bid' or 'Guide Price', and is accompanied by a 'Reserve Price'. The 'Reserve Price' is confidential to the seller and the auctioneer and will typically be within a range above or below 10% of the 'Guide Price' / 'Starting Bid'.

A Legal Pack associated with this particular property is available to view upon request and contains details relevant to the legal documentation enabling all interested parties to make an informed decision prior to bidding. The Legal Pack will also outline the buyers' obligations and sellers' commitments. It is strongly advised that you seek the counsel of a solicitor prior to proceeding with any property and/or Land Title purchase.

Auctioneers Additional Comments

In order to secure the property and ensure commitment from the seller, upon exchange of contracts the successful bidder will be expected to pay a non-refundable deposit equivalent to 5% of the purchase price of the property. The deposit will be a contribution to the purchase price. A non-refundable reservation fee of up to 6% inc VAT (subject to a minimum of 6,000 inc VAT) is also required to be paid upon agreement of sale. The Reservation Fee is in addition to the agreed purchase price and consideration should be made by the purchaser in relation to any Stamp Duty Land Tax liability associated with overall purchase costs.

Both the Marketing Agent and The Auctioneer may believe necessary or beneficial to the customer to pass their details to third party service suppliers, from which a referral fee may be obtained. There is no requirement or indeed obligation to use these recommended suppliers or services.



















































































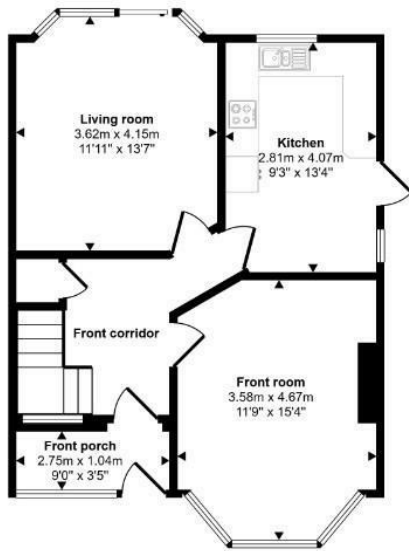




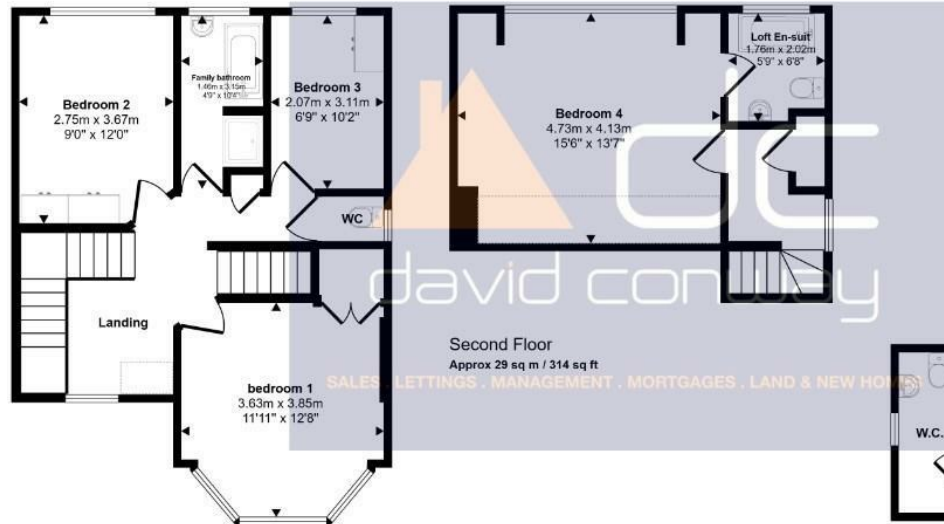




Approx Gross Internal Area  
172 sq m / 1856 sq ft

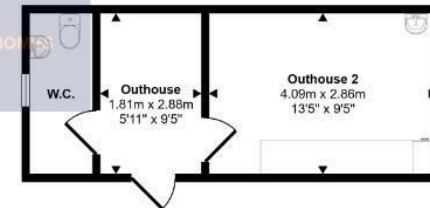


Ground Floor  
Approx 55 sq m / 594 sq ft

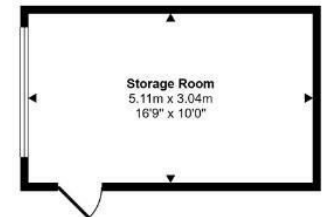


First Floor  
Approx 51 sq m / 552 sq ft

Second Floor  
Approx 29 sq m / 314 sq ft



Outbuilding  
Approx 21 sq m / 228 sq ft

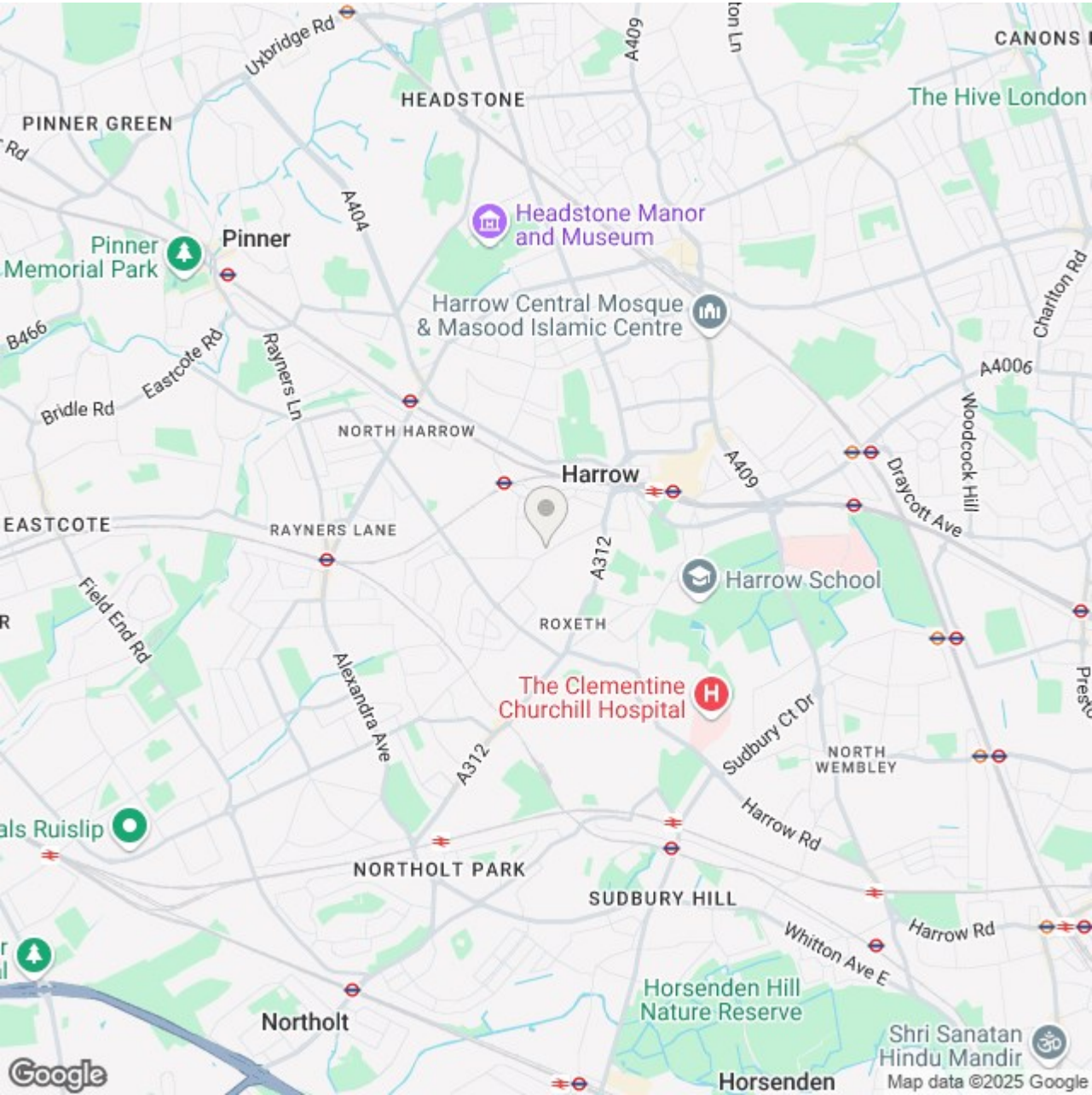



Storage Room  
Approx 16 sq m / 167 sq ft

Denotes head height below 1.5m

This floorplan is only for illustrative purposes and is not to scale. Measurements of rooms, doors, windows, and any items are approximate and no responsibility is taken for any error, omission or mis-statement. Icons of items such as bathroom suites are representations only and may not look like the real items. Made with Made Snappy 360.





Energy Efficiency Rating		
	Current	Potential
Very energy efficient - lower running costs		
(92 plus) A		
(81-91) B		
(69-80) C		80
(55-68) D		
(39-54) E	53	
(21-38) F		
(1-20) G		
Not energy efficient - higher running costs		
England & Wales	EU Directive 2002/91/EC 	

DISCLAIMER: In accordance with the 1993 Misrepresentation Act the agent had not tested any apparatus, equipment, fixtures, fittings or services and so, cannot verify they are in working order, or fit for their purpose. Neither has the agent checked the legal documentation to verify the leasehold/freehold status of the property. The buyer is advised to obtain verification from their solicitor or surveyor. Also, photographs are for illustration only and may depict items which are not for sale or included in the sale of the property, All sizes are approximate. All dimensions include wardrobe spaces where applicable.





**David Conway & Co Ltd**  
**269 Northolt Road**  
**South Harrow**  
**HA2 8HS**  
**0208 422 5222**  
**Sales@davidconway.co.uk**