



St. Johns Avenue, Harlesden, NW10 4ED

£1,700 Per Month



£1,700 Per Month

St. Johns Avenue

London, NW10 4ED

- FIRST FLOOR FLAT
- RECEPTION ROOM
- FAMILY BATHROOM
- UNFURNISHED
- DOUBLE GLAZING
- TWO DOUBLE BEDROOMS
- FITTED KITCHEN
- AVAILABLE NOW
- GAS CENTRAL HEATING
- HALF A MILE TO HARLSDEN STATION

Measuring in at 756 square feet this substantial two double bedroom flat set on the first floor is now available for rent on St. Johns Avenue, NW10 4ED, at £1700.00 per calendar month. Offers excellent transport links, making it convenient to get around London. The property is within walking distance of multiple bus stops, ensuring easy access to various destinations. The nearby Kensal Green and Willesden Junction stations provide quick access to the London Overground and Bakerloo Line, connecting you to central London and beyond.



INTERNALLY

LOCATION

ADDITIONAL INFORMATION

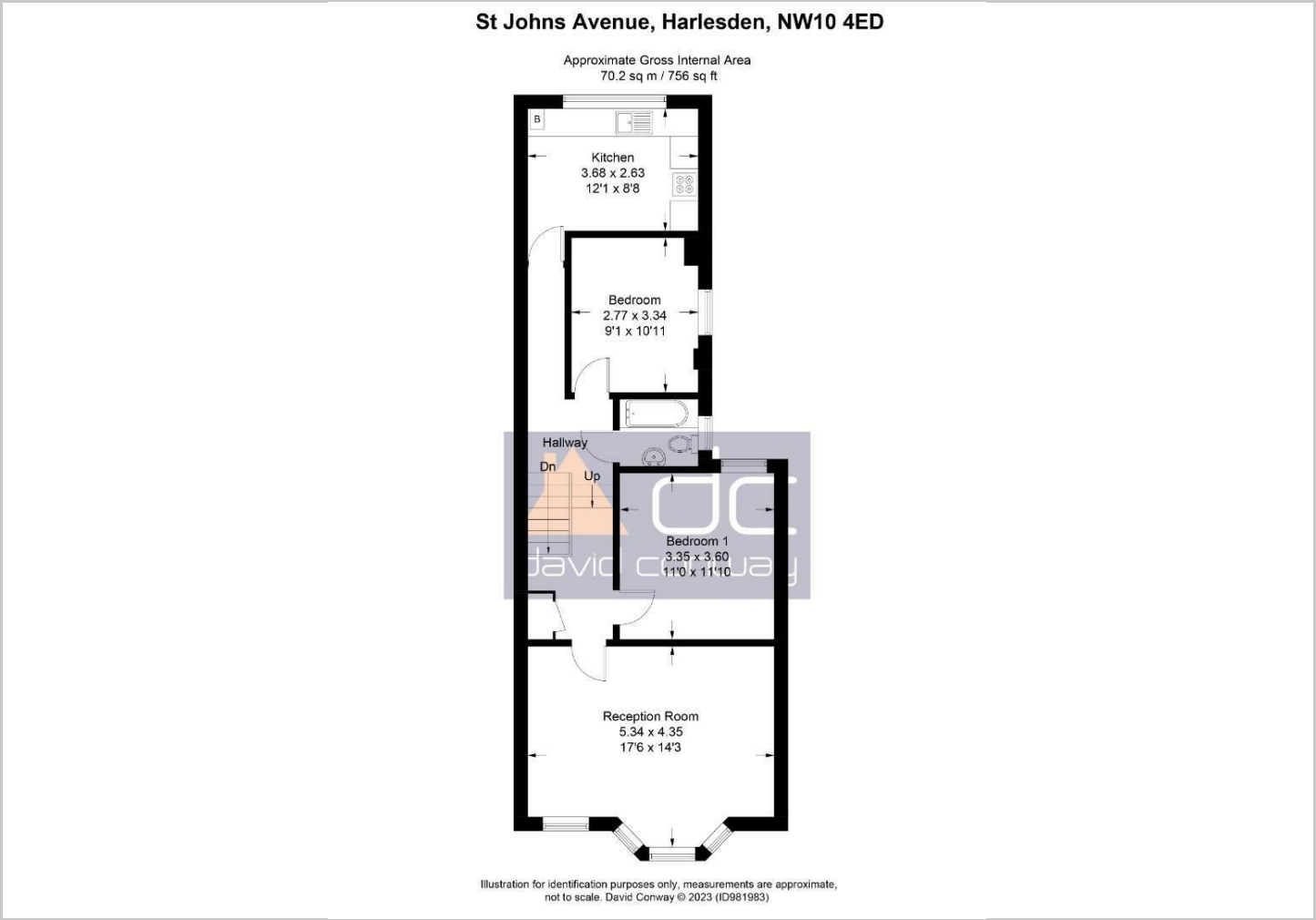




Council Tax Band - C



Floor Plans



Viewing

Please contact our David Conway & Co Ltd Office on 02084225222 if you wish to arrange a viewing appointment for this property or require further information.

The particulars are set out as a general outline only for the guidance of intended purchasers or lessees, and do not constitute, any part of a contract. Nothing in these particulars shall be deemed to be a statement that the property is in good structural condition or otherwise nor that any of the services, appliances, equipment or facilities are in good working order. Purchasers should satisfy themselves of this prior to purchasing.

Location Map



Energy Performance Graph

