

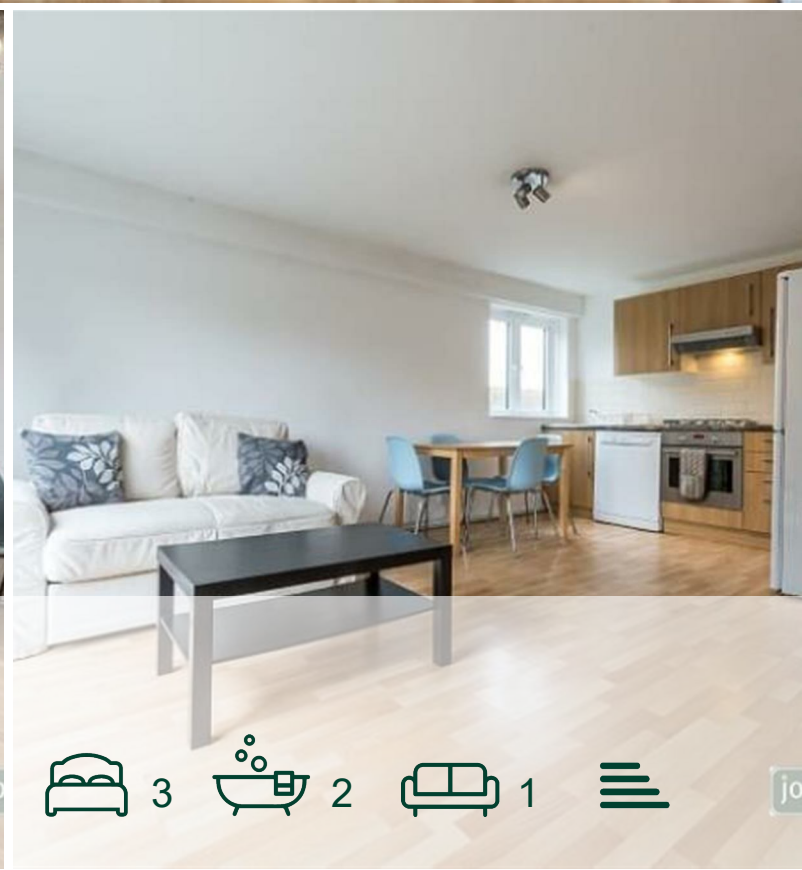






jorgensenturner
estate agents



Peascroft House,
Willesden Lane NW6

£2,350 Per Month



jo  3  2  1  jo

Peascroft House, Willesden Lane NW6

£2,350 Per Month



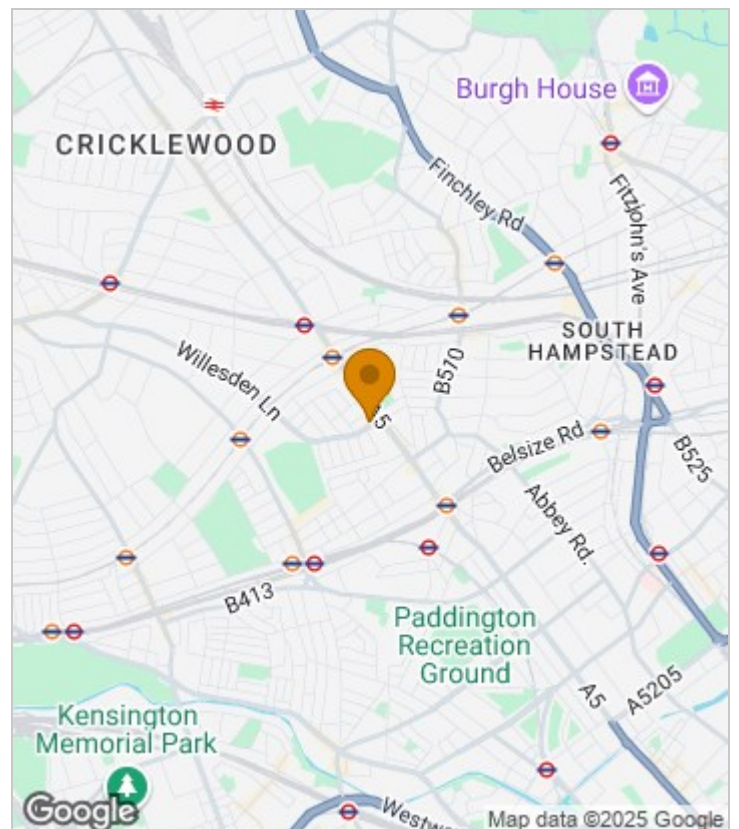
Summary Description

This bright and spacious 3-bedroom flat is available from the 29th of April. Situated on the second floor, the property features a large open-plan kitchen, three generously sized double bedrooms, two bathrooms, and an additional WC. Each bedroom is furnished with a double bed, chest of drawers, and wardrobe. The kitchen is fully equipped with a full-size fridge freezer, a large dishwasher, and ample dining space.

The flat benefits from its close proximity to a variety of local amenities in Kilburn, Willesden Green, Cricklewood, and West Hampstead.

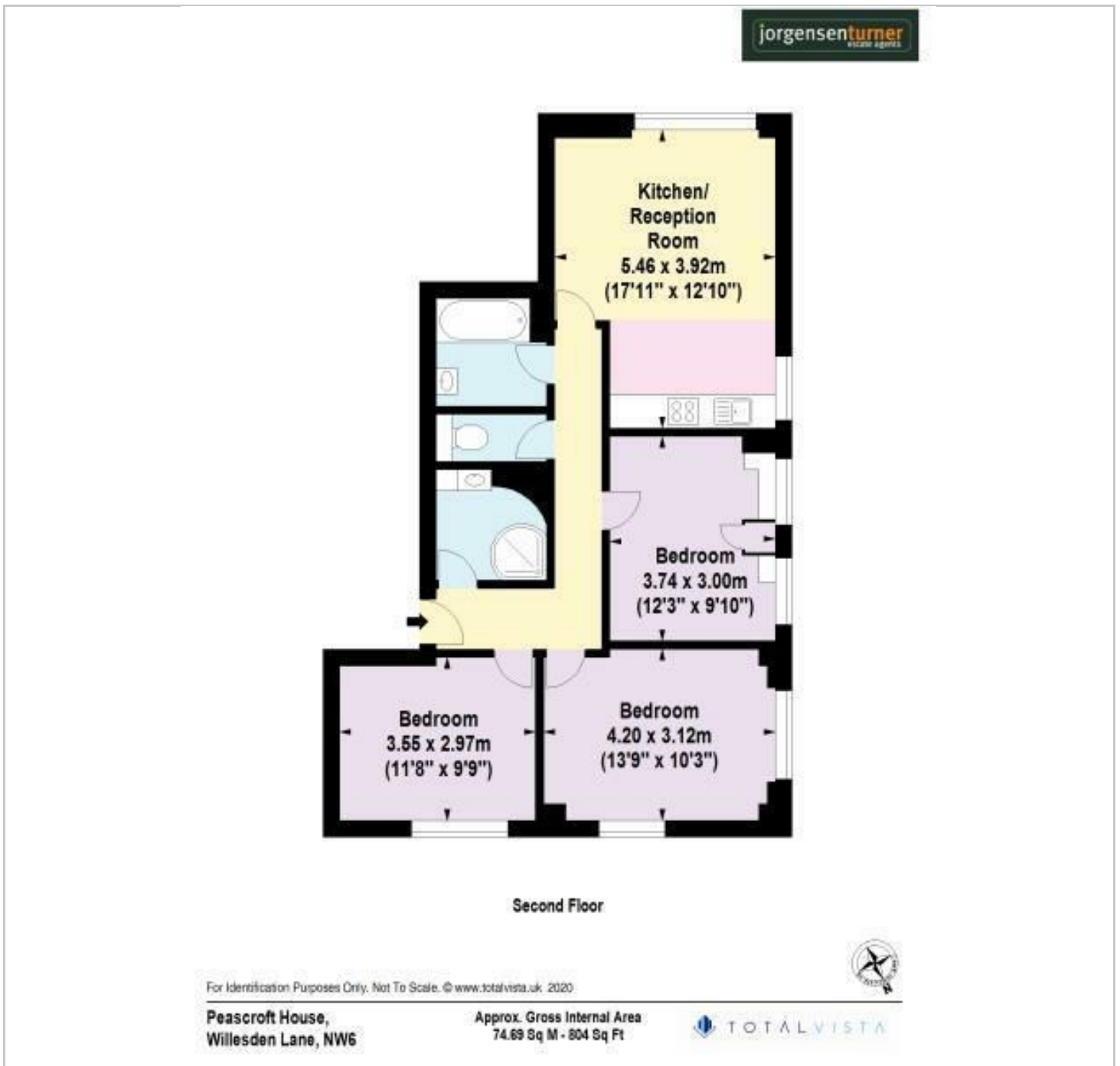
To arrange a viewing, please contact Jorgensen Turner Estate Agents. A one-week holding deposit and a five-week damage deposit are required. The property falls under Council Tax Band D.

Area Map

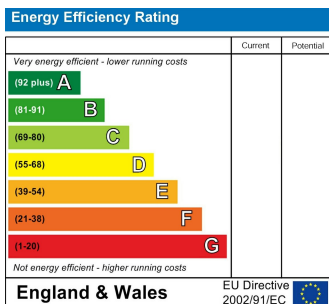




Floor Plan



Energy Efficiency Graph



Viewing

Please contact our Lettings QP Office on 0207 604 4040 if you wish to arrange a viewing appointment for this property or require further information.

For further information contact:

Lettings QP, 2a Brondesbury Road, London, NW6 6AS

Tel: 0207 604 4040 Email: info@jorgensenturner.com <https://www.jorgensenturner.com/>

Disclaimer

These particulars, whilst believed to be accurate are set out as a general outline only for guidance and do not constitute any part of an offer or contract. Intending purchasers should not rely on them as statements of representation of fact, but must satisfy themselves by inspection or otherwise as to their accuracy. No person in this firm's employment has the authority to make or give any representation or warranty in respect of the property.

