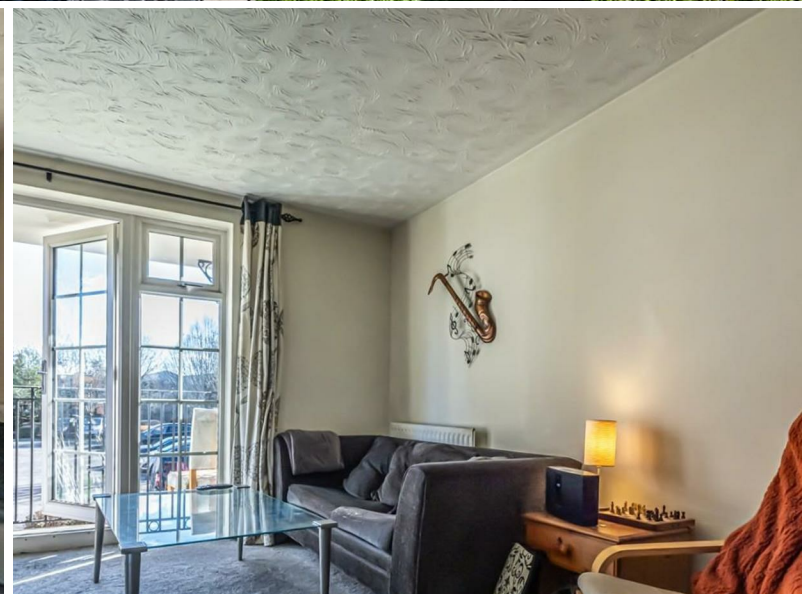




jt | JORGENSENTURNER



Shaftesbury Gardens, London

£1,750 Per Month



2



1



1



C



Shaftesbury Gardens, London

£1,750 Per Month

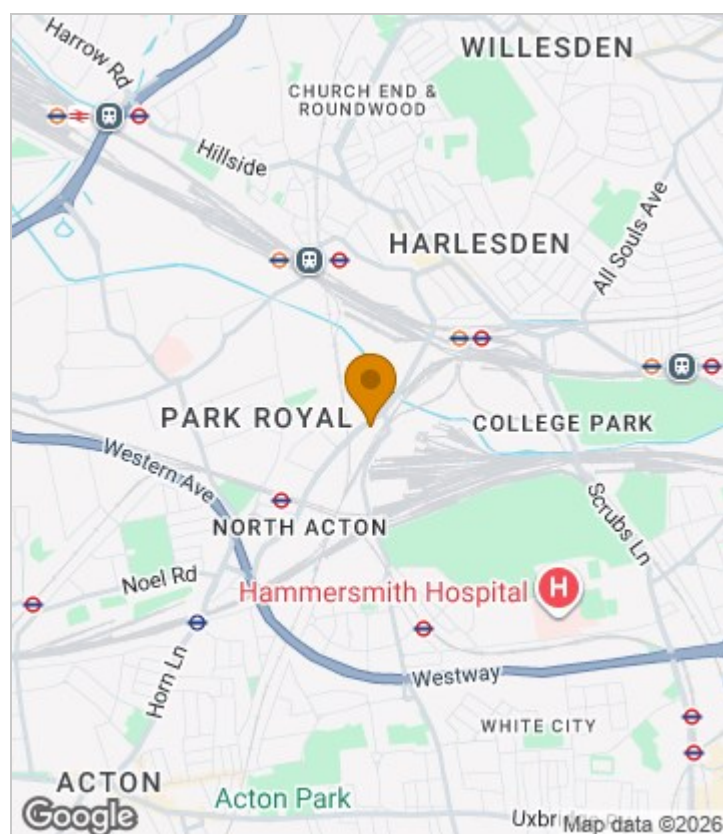


Summary Description

This spacious first floor furnished flat located in a popular modern development Shaftesbury Gardens is available from 19th of April. The property features spacious and well proportioned accommodation with a bright reception and dining room leading on to a private balcony, a good sized fitted modern kitchen, two double bedrooms with built in wardrobes and a modern bathroom. Further benefits include a communal garden, an allocated parking space and the property being a 7 minute walk to North Acton Central line and Willesden Junction station, as well as easy access to the A40.

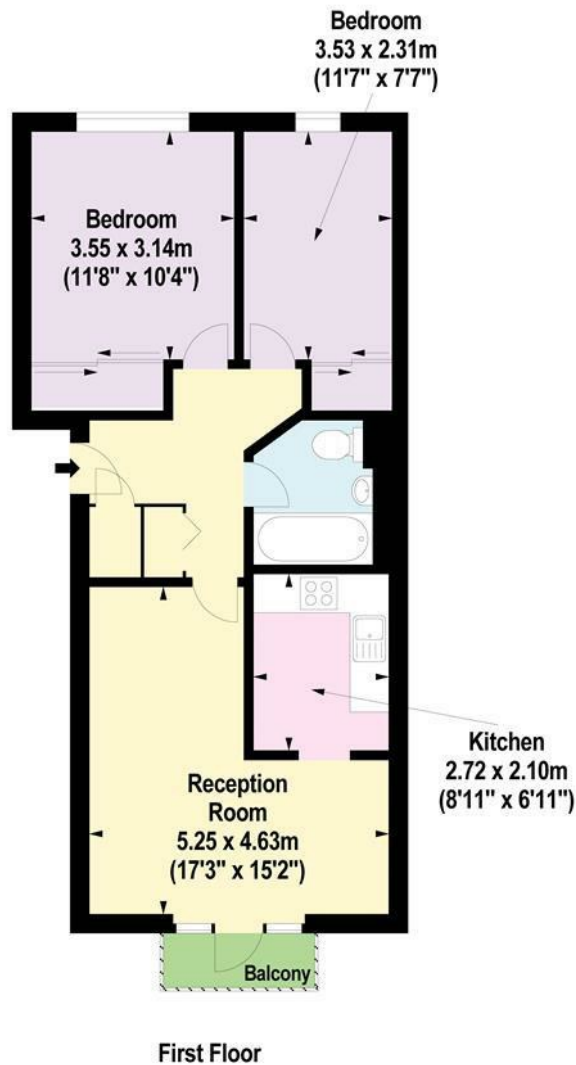
EPC will be available shortly, council tax band D, one week's holding deposit required, 5 weeks damage deposit required.

Area Map





Floor Plan



For Identification Purposes Only. Not To Scale. © www.totalvista.uk 2024

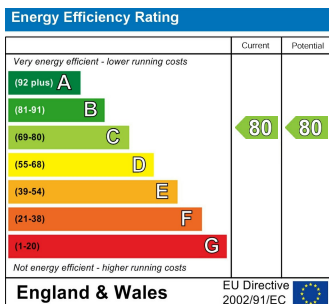


Shaftesbury Gardens, NW10

Approx. Gross Internal Area
60.57 Sq M - 652 Sq Ft



Energy Efficiency Graph



Viewing

Please contact our Lettings QP Office on 0207 604 4040 if you wish to arrange a viewing appointment for this property or require further information.

For further information contact:

Lettings QP, 2a Brondesbury Road, London, NW6 6AS

Tel: 0207 604 4040 Email: info@jorgensenturner.com <https://www.jorgensenturner.com/>

Disclaimer

These particulars, whilst believed to be accurate are set out as a general outline only for guidance and do not constitute any part of an offer or contract. Intending purchasers should not rely on them as statements of representation of fact, but must satisfy themselves by inspection or otherwise as to their accuracy. No person in this firm's employment has the authority to make or give any representation or warranty in respect of the property.