



jt | JORGENSENTURNER



Belsize Road, London

£3,200 Per Month



jt 2 2 1 B jt

# Belsize Road, London

£3,200 Per Month



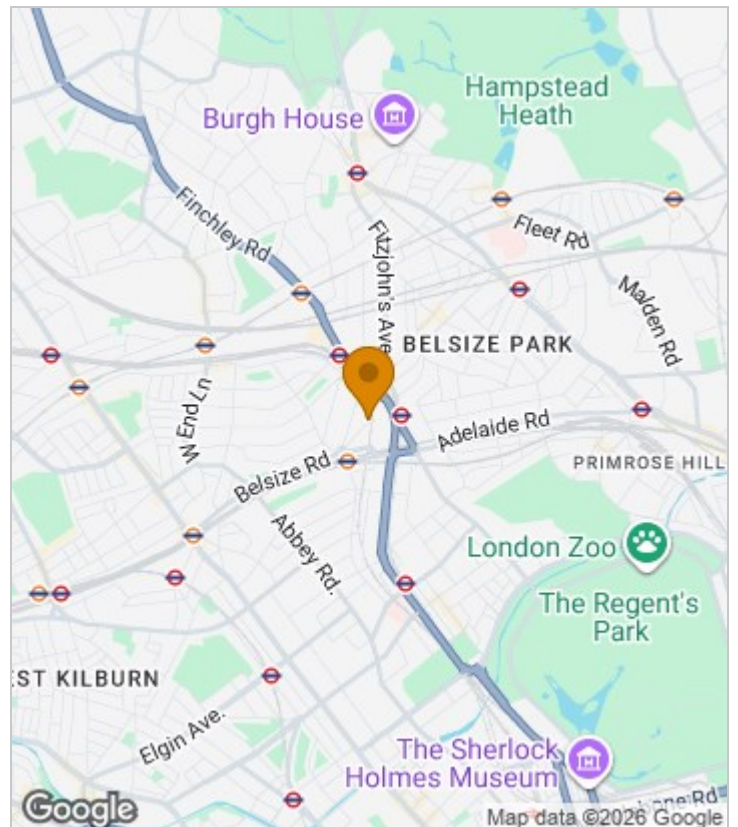
## Summary Description

Truly one of a kind modern two bedroom two bathroom property is available from 30th of November. This beautiful carefully designed property is available for two people only. Both bedrooms comes with fitted large wardrobe, both bedroom are bright, master bedroom has en-suite. Property has very delicate yet ultra modern feel about it, comes with fully fitted and high spec kitchen, modern bathrooms, tons of additional storage, window are high performance windows.

Other features are custom made furniture, engineered wood floor, high ceiling, large private terrace, air filtering system. HEATING AND HOT WATER IS INCLUDED IN RENTAL PRICE. This property has no parking option however please enquire for more information if parking would be must. The building has concierge available Monday to Saturday to provide extra convenience to the residents as well as double security doors for the access. Located within easy access to South Hampstead overground station, St John`s Station underground station, West Hampstead underground and overground station, Kilburn High Road underground stations.

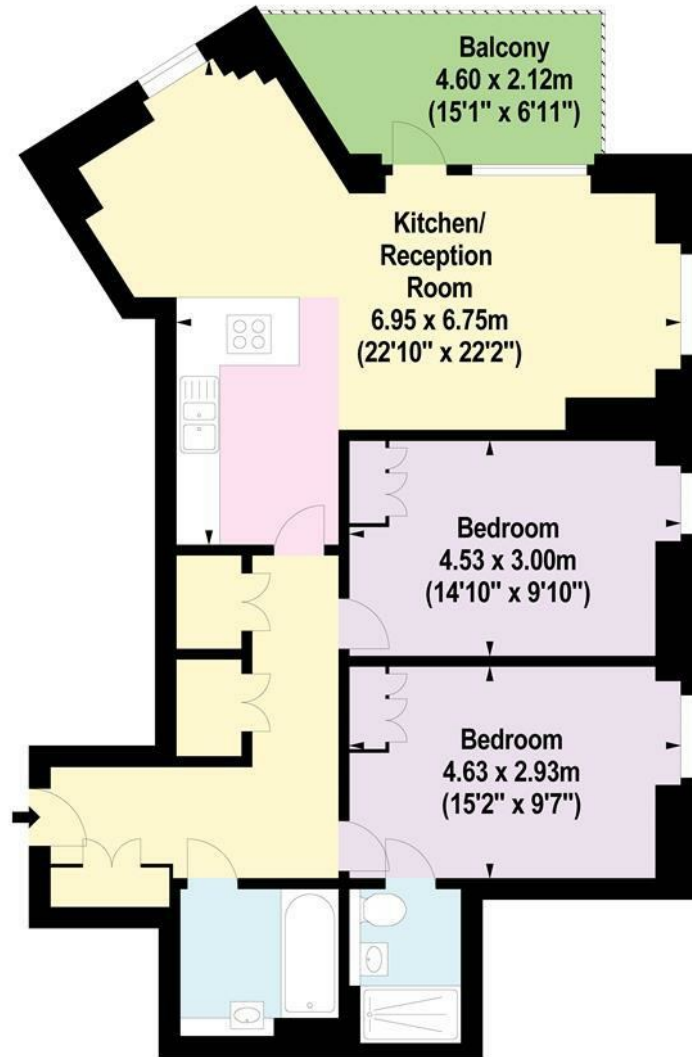
EPC rating B, one week`s holding deposit required, 5 weeks damage deposit required, Council tax and E.

## Area Map





# Floor Plan



First Floor



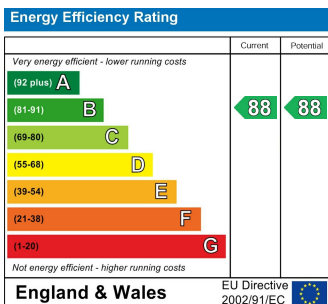
For Identification Purposes Only. Not To Scale. © www.totalvista.uk 2023

Belsize Road, NW6

Approx. Gross Internal Area  
83.61 Sq M - 900 Sq Ft



## Energy Efficiency Graph



## Viewing

Please contact our Lettings QP Office on 0207 604 4040 if you wish to arrange a viewing appointment for this property or require further information.

- Stunning two bedroom flat
- Engineered wooden floor
- Located around the corner from ever so famous Abbey Road
- Air filtering system
- Heating included
- Two bathroom
- Great storage
- Underfloor heating
- Private balcony
- Hot water included

For further information contact:

Lettings QP, 2a Brondesbury Road, London, NW6 6AS

Tel: 0207 604 4040 Email: [info@jorgensenturner.com](mailto:info@jorgensenturner.com) <https://www.jorgensenturner.com/>

## Disclaimer

These particulars, whilst believed to be accurate are set out as a general outline only for guidance and do not constitute any part of an offer or contract. Intending purchasers should not rely on them as statements of representation of fact, but must satisfy themselves by inspection or otherwise as to their accuracy. No person in this firm's employment has the authority to make or give any representation or warranty in respect of the property.