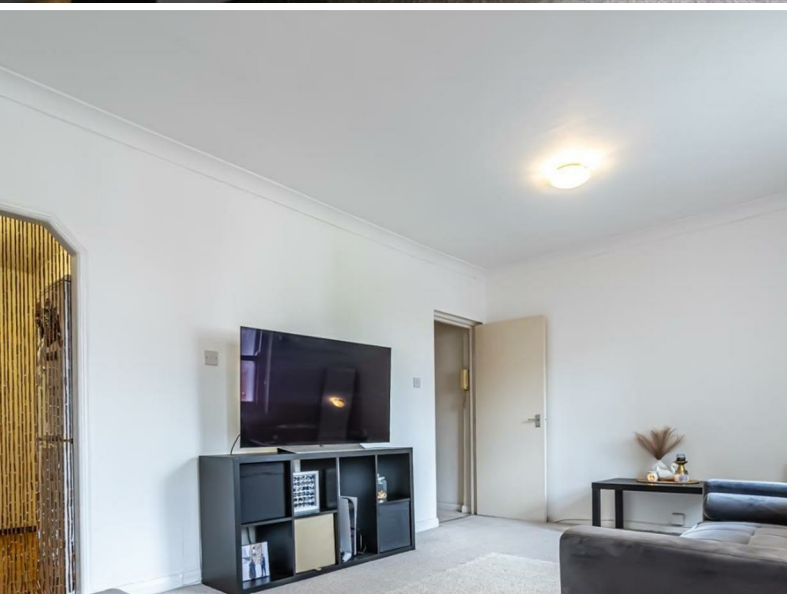




jt | JORGENSENTURNER



Kilburn High Road, London

£1,595 Per Month

jt  1  1  1  jt

Kilburn High Road, London

£1,595 Per Month

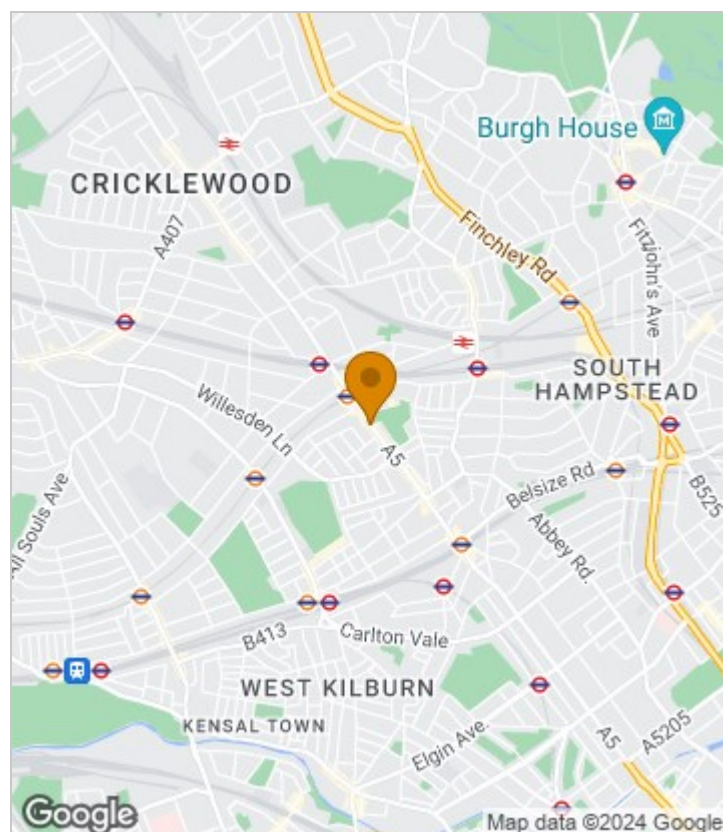


Summary Description

Spacious and really well located property is available from 21st of June. Flat is offering 581 sq/ft space that features large and bright lounge, separate kitchen, large bedroom and clean and tidy bathroom. Flat is located 5 min from Kilburn station (Jubilee line) and 3 min away from Brondesbury station (overground), great bus links to central London, shops and restaurants are within short walking distance.

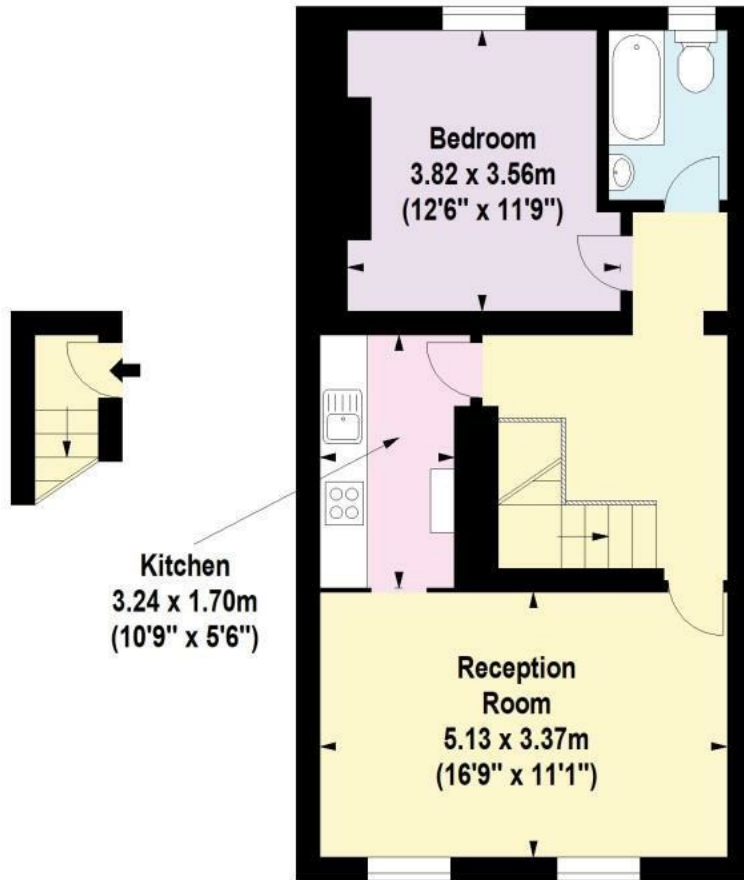
Property comes part furnished. To get more information please call Jorgensen Turner Estate Agents. One week's holding deposit will be required, 5 weeks damage deposit will be required, council tax band B, EPC E.

Area Map





Floor Plan



First Floor
Entrance

Second Floor

For Identification Purposes Only. Not To Scale. © www.totalvista.uk 2022

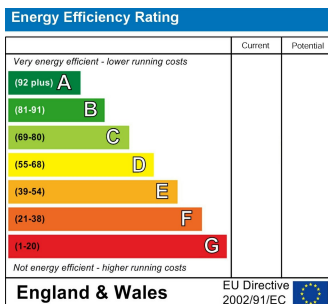


Kilburn High Road, NW6

Approx. Gross Internal Area
53.97 Sq M - 581 Sq Ft



Energy Efficiency Graph



Viewing

Please contact our Lettings QP Office on 0207 604 4040 if you wish to arrange a viewing appointment for this property or require further information.

- Top Floor flat
- Bright property
- Separate kitchen
- Spacious 581sq/ ft
- 5 min walking from Jubilee line
- Close to shops and restaurants

For further information contact:

Lettings QP, 2a Brondesbury Road, London, NW6 6AS

Tel: 0207 604 4040 Email: info@jorgensenturner.com <https://www.jorgensenturner.com/>

Disclaimer

These particulars, whilst believed to be accurate are set out as a general outline only for guidance and do not constitute any part of an offer or contract. Intending purchasers should not rely on them as statements of representation of fact, but must satisfy themselves by inspection or otherwise as to their accuracy. No person in this firm's employment has the authority to make or give any representation or warranty in respect of the property.