



jt | JORGENSENTURNER



Sandby House,
Brondesbury Road,
£2,650 Per Month

jt



3



1



1

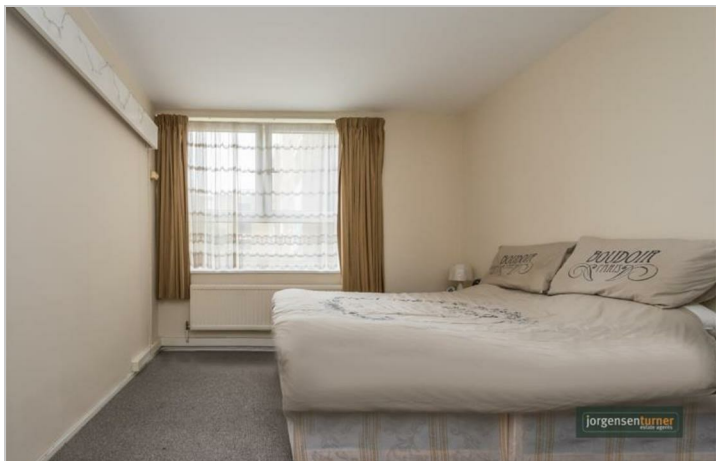


B

jt

Sandby House, Brondesbury Road,

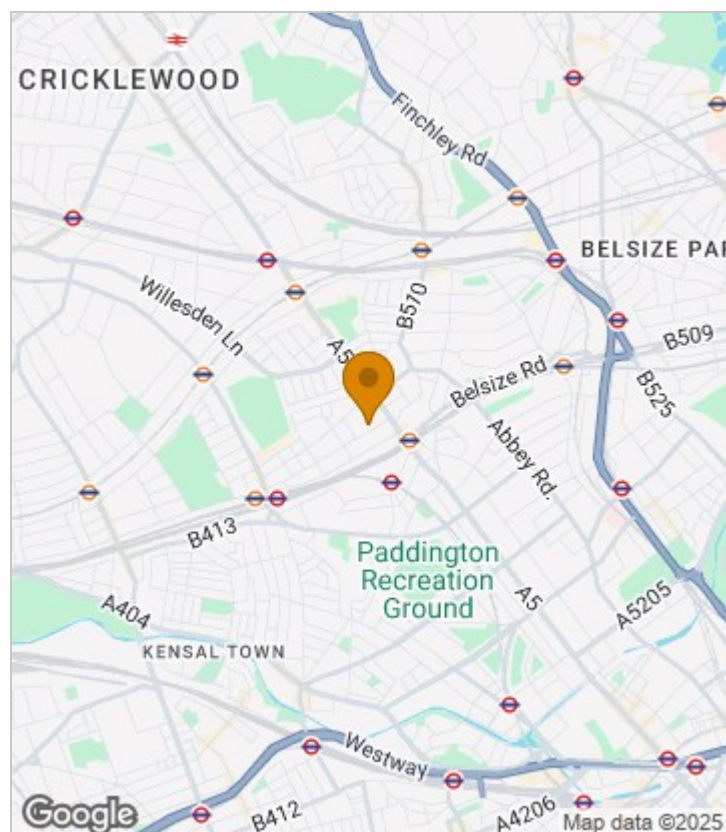
£2,650 Per Month



Summary Description

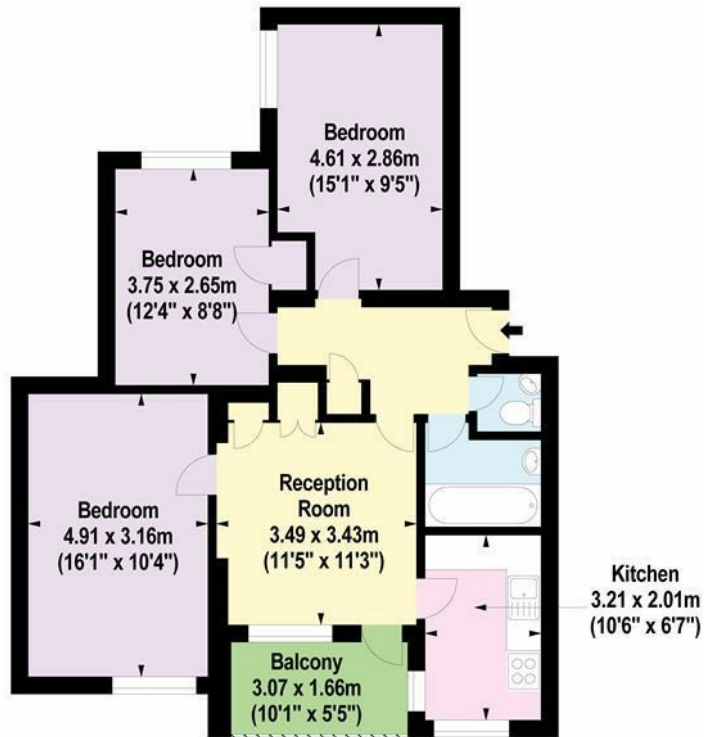
This lovely three double bedroom flat is available to rent in Kilburn in a well maintained purpose built ex-local authority building offering access to a communal garden and off street parking. Property comprises three double bedrooms, a separate lounge, separate kitchen, bathroom with separate WC and private balcony overlooking communal garden. The property is neutrally decorated throughout and is offering tons of light. Ideally located close to Kilburn Park and Queens Park stations along with Kilburn High Road and Salusbury Road shops and amenities. Available furnished from the 9th of August. To arrange a viewing please contact Jorgensen Turner estate agents. EPC rating B, Council tax band C, one weeks holding deposit will be required, 5 weeks damage deposit will be required.

Area Map





Floor Plan



Second Floor

For Identification Purposes Only. Not To Scale. © www.totalvista.uk 2025

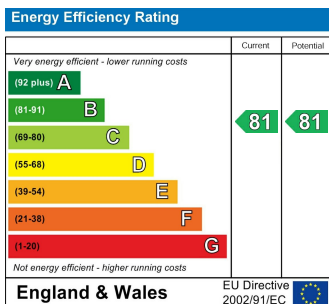


Sandby House,
Brondesbury Road, NW6

Approx. Gross Internal Area
72.18 Sq M - 777 Sq Ft



Energy Efficiency Graph



Viewing

Please contact our Lettings QP Office on 0207 604 4040 if you wish to arrange a viewing appointment for this property or require further information.

For further information contact:

Lettings QP, 2a Brondesbury Road, London, NW6 6AS

Tel: 0207 604 4040 Email: info@jorgensenturner.com <https://www.jorgensenturner.com/>



Disclaimer

These particulars, whilst believed to be accurate are set out as a general outline only for guidance and do not constitute any part of an offer or contract. Intending purchasers should not rely on them as statements of representation of fact, but must satisfy themselves by inspection or otherwise as to their accuracy. No person in this firm's employment has the authority to make or give any representation or warranty in respect of the property.