



jt | JORGENSENTURNER



Barrett House, Victoria Road

£2,200 Per Month



jt |  2  1  1  C jt

Barrett House, Victoria Road

£2,200 Per Month



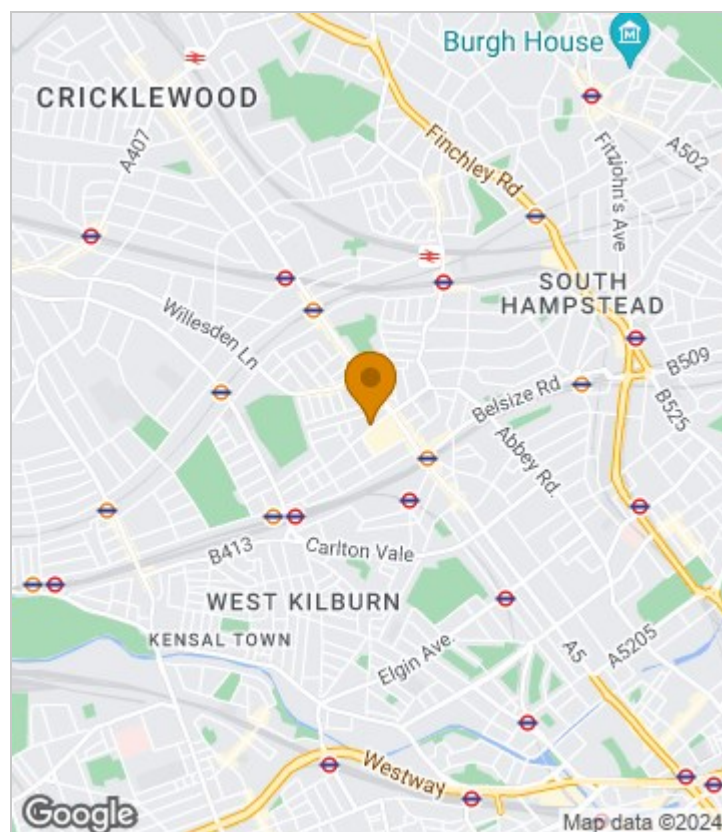
Summary Description

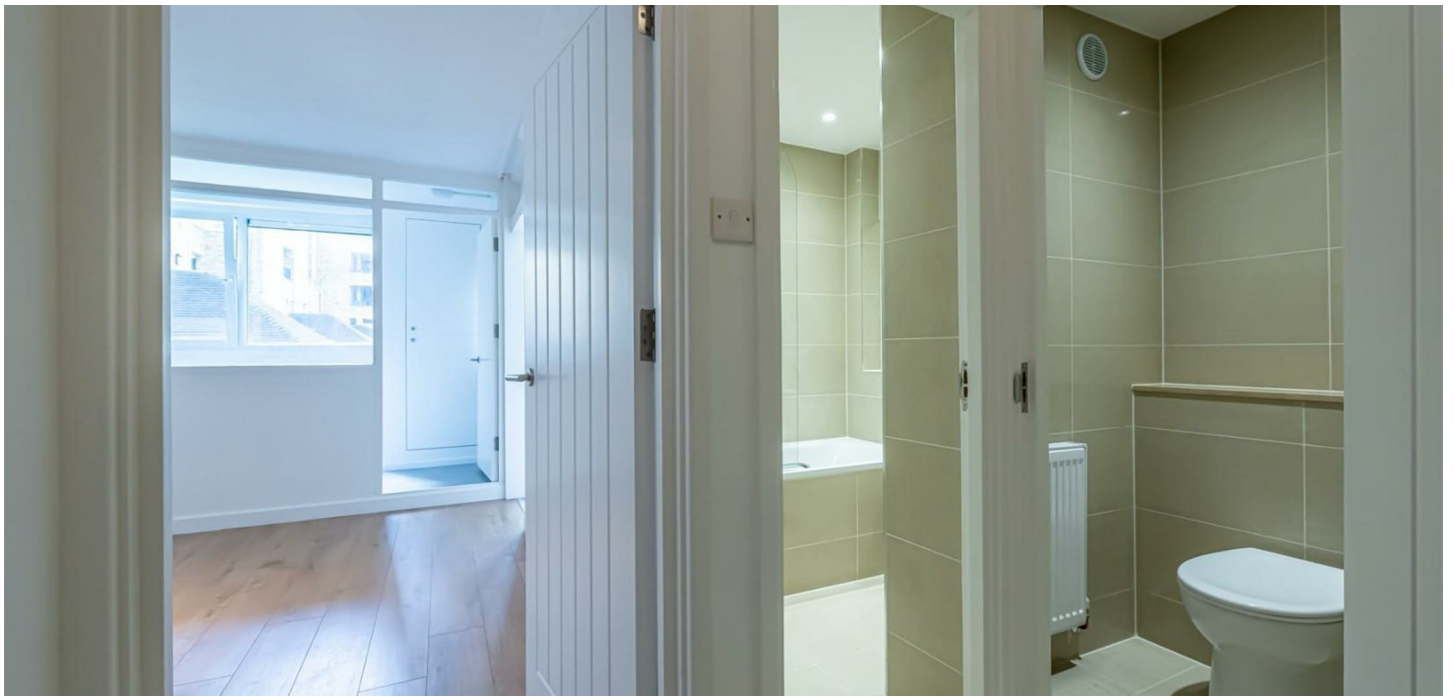
We are delighted to present this brand new refurbished two double bedroom, ground floor apartment to the market. The property is available immediately and comes unfurnished offering well-proportioned bedrooms, modern fully fitted separate kitchen, neutral décor and double glazed windows.

Property is conveniently located close to amazing transport links as Queens Park station is 10minutes away, Kilburn Park station is 7 minutes away, Kilburn high road Overground is 3 minutes away as well as many different bus routes providing easy access to central London. Easy access to many bars, restaurants and shops. on both Kilburn High Road and Salusbury Road.

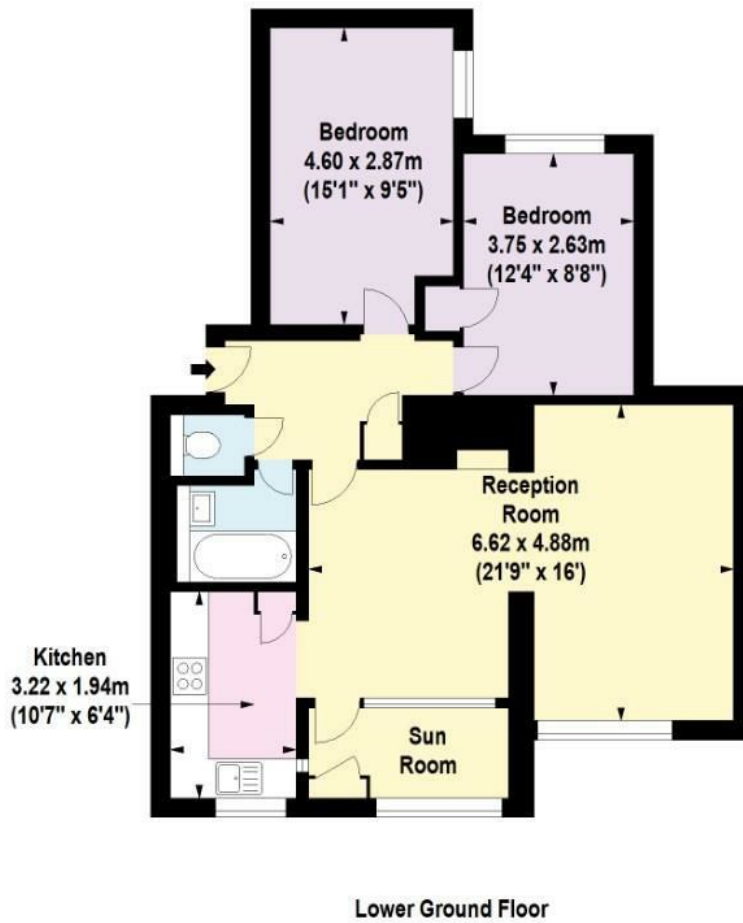
One week's holding deposit required, 5 weeks damage deposit required, EPC rating C.

Area Map





Floor Plan



For Identification Purposes Only. Not To Scale. © www.totalvista.uk 2024

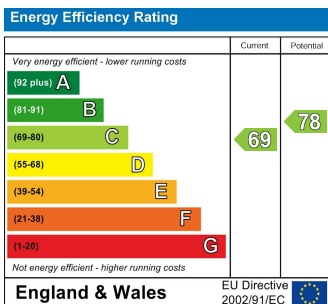


Barrett House, NW6

Approx. Gross Internal Area
77.20 Sq M - 831 Sq Ft



Energy Efficiency Graph



Viewing

Please contact our Lettings QP Office on 0207 604 4040 if you wish to arrange a viewing appointment for this property or require further information.

- Newly Refurnished
- Available Immediately
- Unfurnished
- Double Glazed Windows
- Great Location

For further information contact:

Lettings QP, 2a Brondesbury Road, London, NW6 6AS

Tel: 0207 604 4040 Email: info@jorgensenturner.com <https://www.jorgensenturner.com/>

Disclaimer

These particulars, whilst believed to be accurate are set out as a general outline only for guidance and do not constitute any part of an offer or contract. Intending purchasers should not rely on them as statements of representation of fact, but must satisfy themselves by inspection or otherwise as to their accuracy. No person in this firm's employment has the authority to make or give any representation or warranty in respect of the property.

