



jt | JORGENSENTURNER



Malvern Road, North
Maida Vale, NW6

£2,200

jt



2



1



1

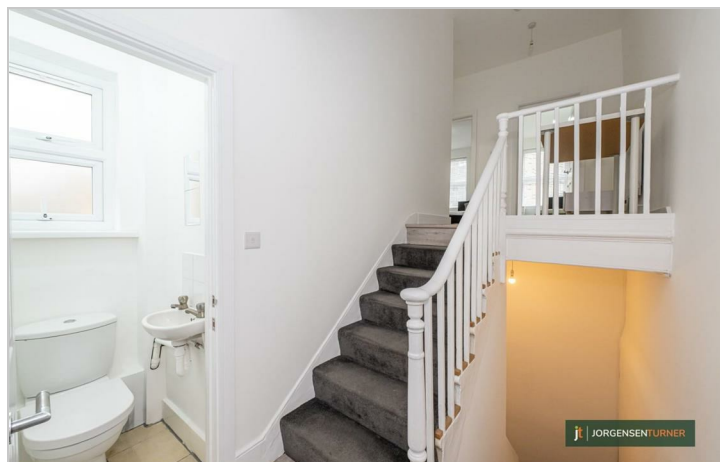


D

jt

Malvern Road, North Maida Vale, NW6

£2,200



Summary Description

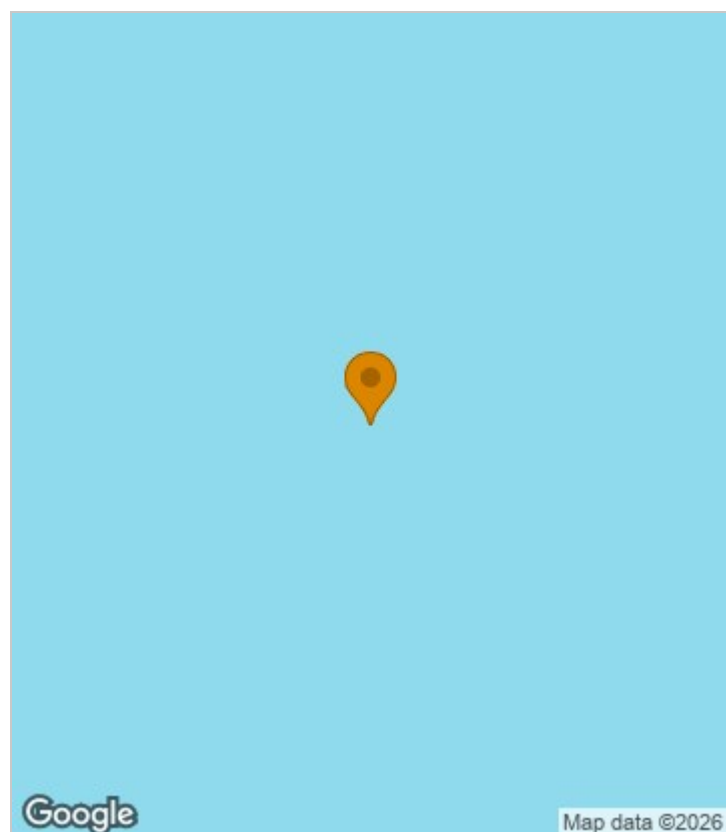
This exceptionally bright two-bedroom split-level flat is available immediately. The property offers three spacious, fully furnished bedrooms, a large modern bathroom, and a contemporary open-plan kitchen/diner.

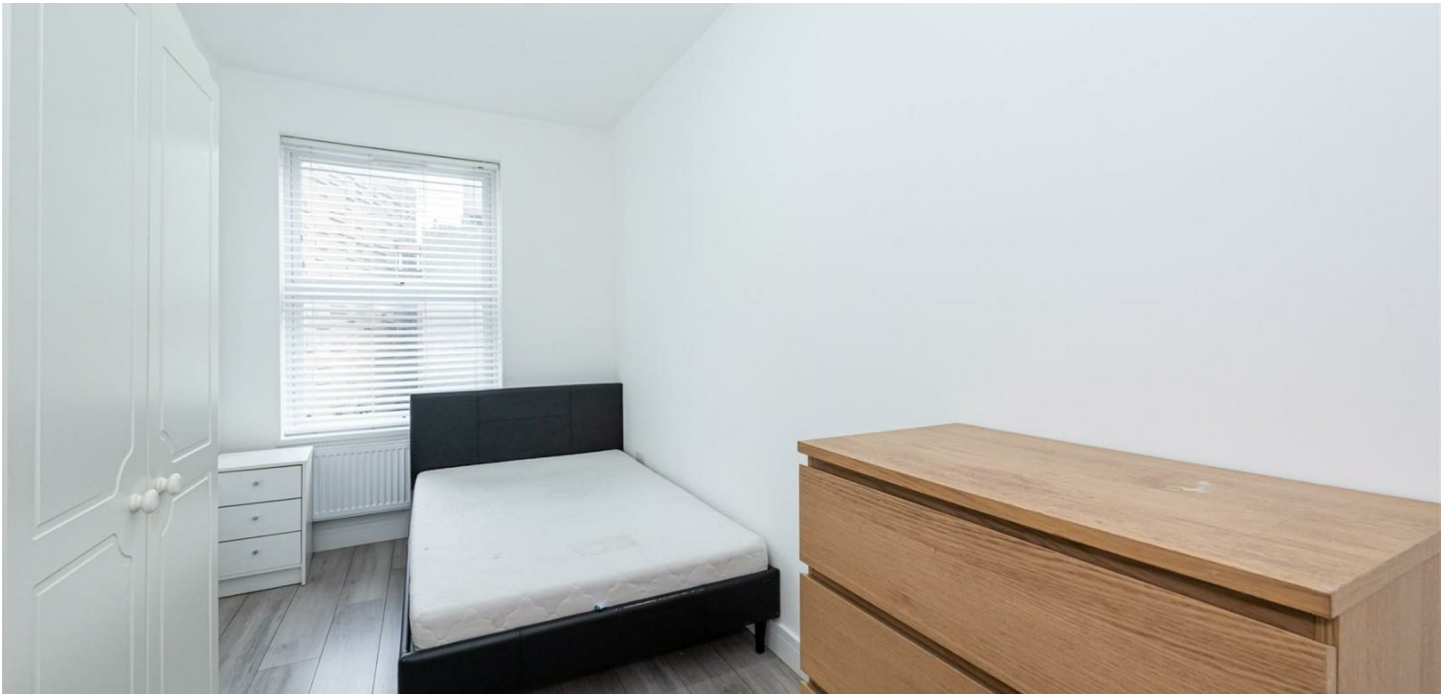
Ideal for sharers, the flat is well located with Maida Vale Station within a 15-minute walk and Queen's Park Station just 8 minutes away. A wide range of shops, cafés, and restaurants are nearby, with easy access to Central London.

One week's holding deposit required, five weeks' damage deposit, EPC rating: E, Council tax band: C

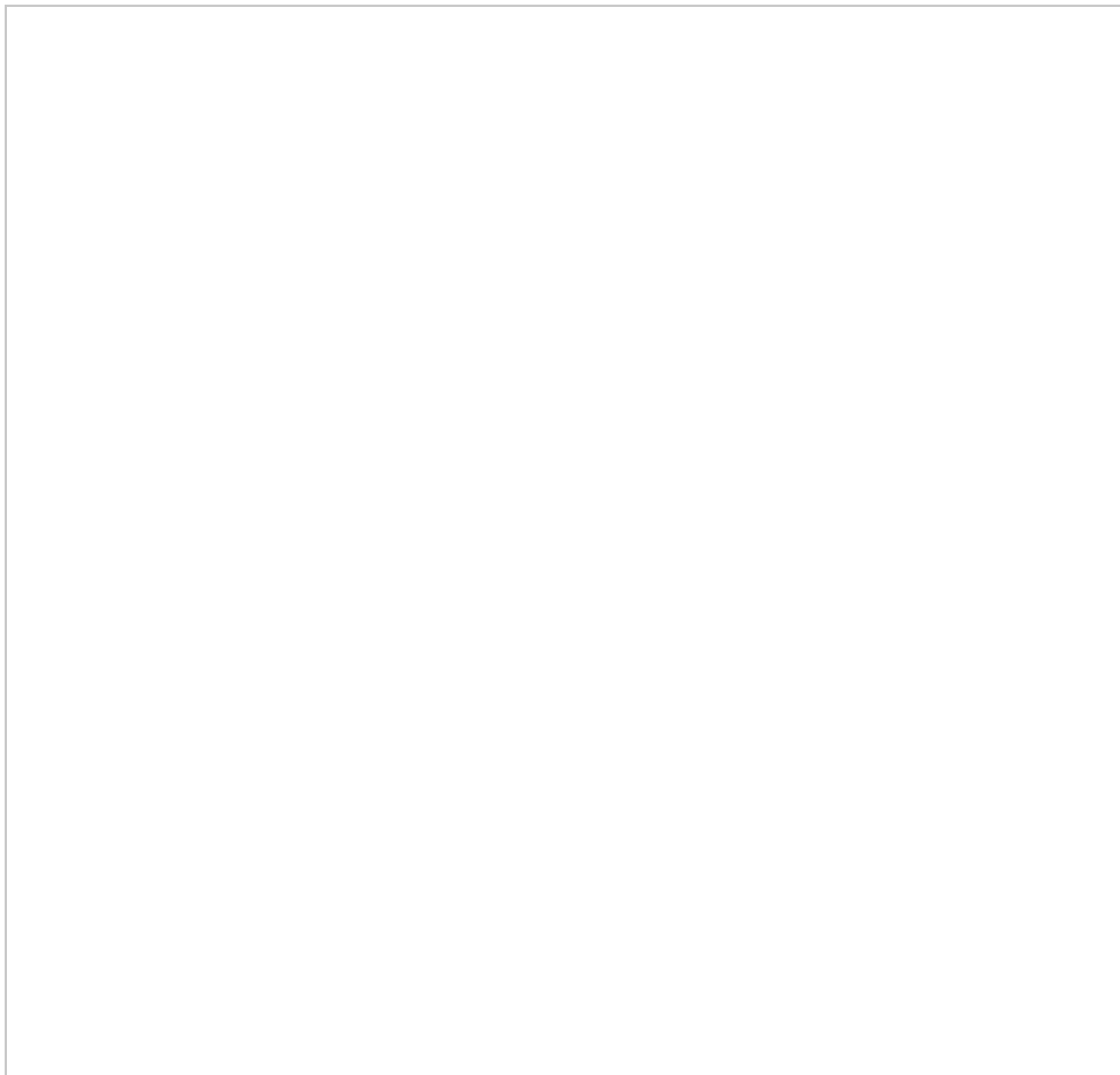
Call Jorgensen Turner today to arrange a viewing

Area Map

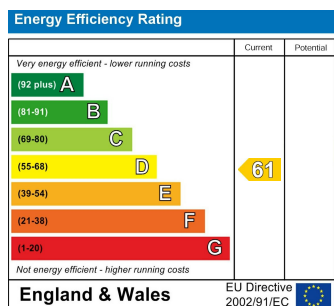




Floor Plan



Energy Efficiency Graph



Viewing

Please contact our Lettings QP Office on 0207 604 4040 if you wish to arrange a viewing appointment for this property or require further information.

For further information contact:

Lettings QP, 2a Brondesbury Road, London, NW6 6AS

Tel: 0207 604 4040 Email: info@jorgensenturner.com <https://www.jorgensenturner.com/>

Disclaimer

These particulars, whilst believed to be accurate are set out as a general outline only for guidance and do not constitute any part of an offer or contract. Intending purchasers should not rely on them as statements of representation of fact, but must satisfy themselves by inspection or otherwise as to their accuracy. No person in this firm's employment has the authority to make or give any representation or warranty in respect of the property.