



jorgensenturner
estate agents



Brondesbury Road,
London

£2,150 Per Week



2



1



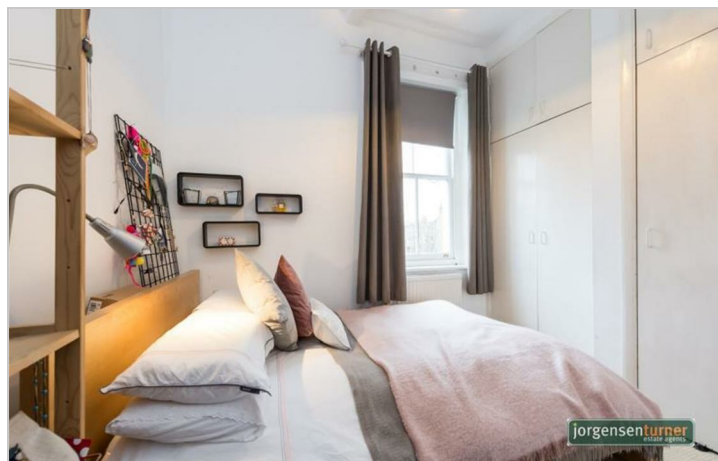
1



D

Brondesbury Road, London

£2,150 Per Week



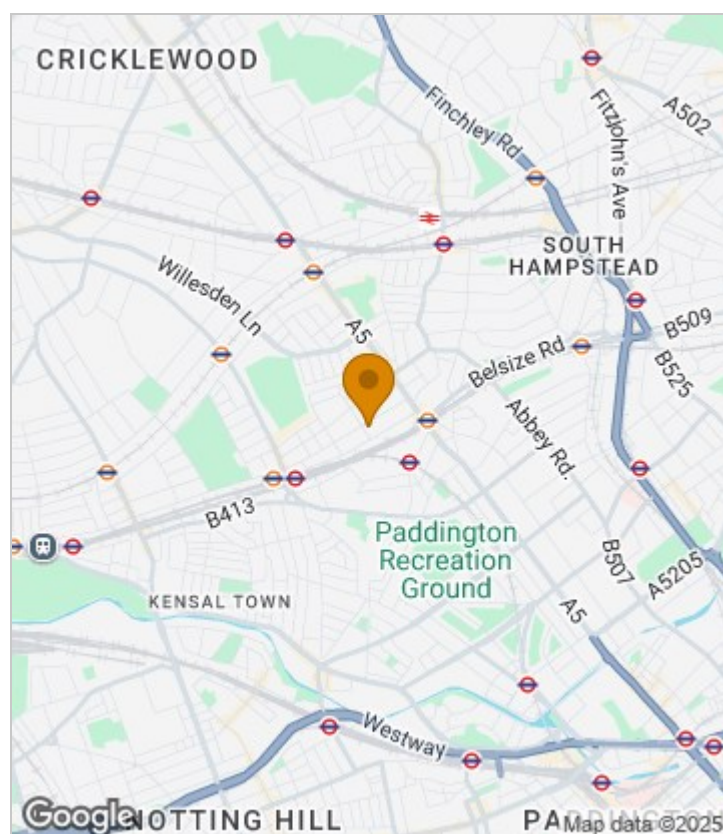
Summary Description

Jorgensen Turner estate agents are pleased to present a superbly spacious and well balanced first floor two bedroom flat in a Victorian period conversion offering many period features. The flat comprises two double bedrooms, bathroom with bath tub, very large reception room, and a fully equipped kitchen with appliances. Available from

Brondesbury Road is a residential street with excellent transport links including Queens Park, Kilburn High Road and Kilburn Park stations moments away. To arrange viewing for this lovely property please call Jorgensen Turner estate agents.

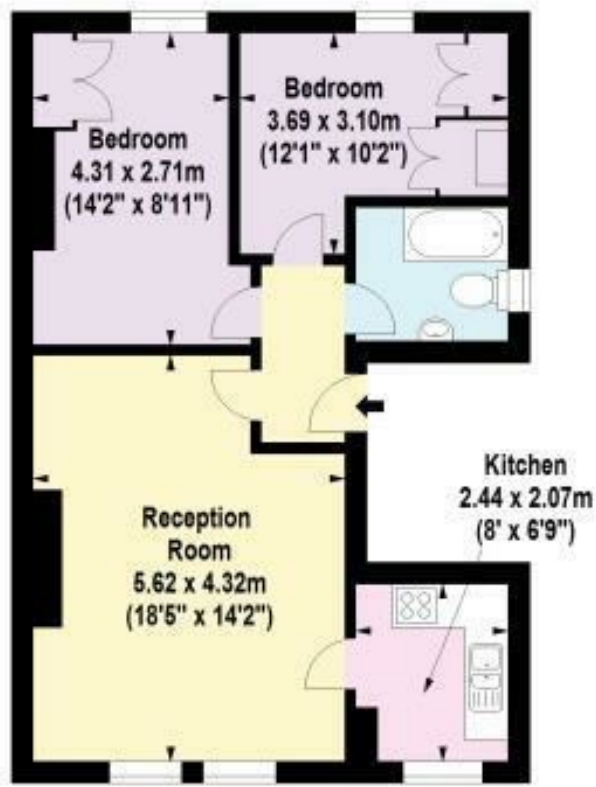
One weeks holding deposit required, 5 weeks damage deposit required, council tax band D

Area Map





Floor Plan



First Floor

For Identification Purposes Only. Not To Scale. © www.totalvista.uk 2019

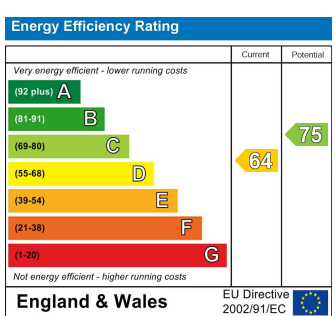


Brondesbury Road, NW6

Approx. Gross Internal Area
68.26 Sq M - 627 Sq Ft



Energy Efficiency Graph



Viewing

Please contact our Lettings QP Office on 0207 604 4040 if you wish to arrange a viewing appointment for this property or require further information.

- Two bedroom flat
- High ceiling
- Good fitted storage
- Brondesbury road
- Separate bathroom
- Clean bathroom
- Queens Park station

For further information contact:

Lettings QP, 2a Brondesbury Road, London, NW6 6AS

Tel: 0207 604 4040 Email: info@jorgensenturner.com <https://www.jorgensenturner.com/>



Disclaimer

These particulars, whilst believed to be accurate are set out as a general outline only for guidance and do not constitute any part of an offer or contract. Intending purchasers should not rely on them as statements of representation of fact, but must satisfy themselves by inspection or otherwise as to their accuracy. No person in this firms employment has the authority to make or give any representation or warranty in respect of the property.