



J | JORGENSENTURNER



Honeypot Lane,
Queensbury

£1,550 Per Month



2



1



1



D



Honeypot Lane, Queensbury

£1,550 Per Month



Summary Description

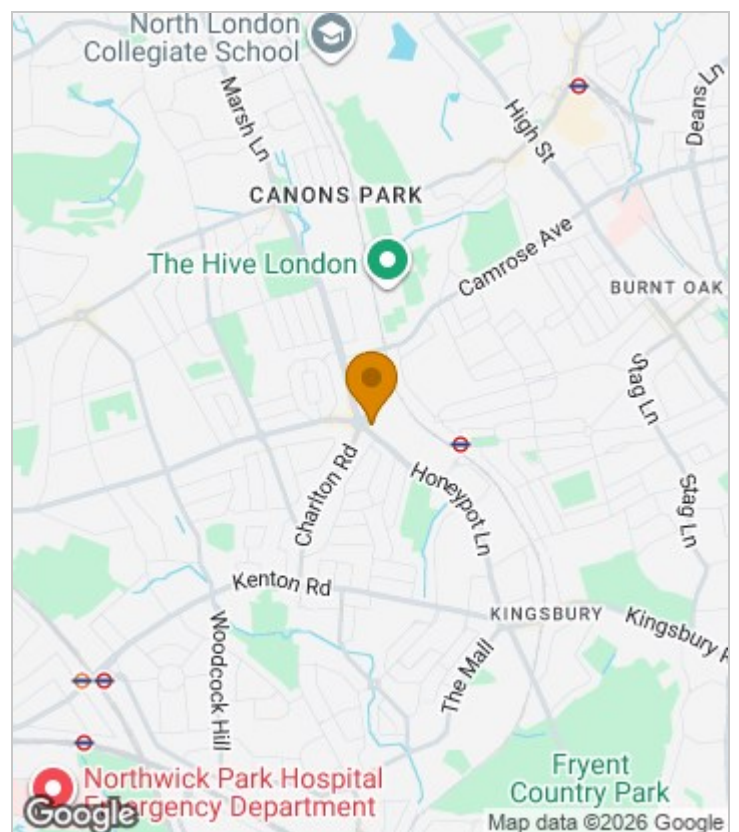
A good size two double bedroom ground floor flat with an own entrance just a short distance to Queensbury tube station(10 minutes walk) is available from 25th of April.

Both bedrooms comes with fitted wardrobes, separate lounge, separate kitchen, fully fitted bathroom, recently changed carpets, double glazed windows that allows tons of light, neutral décor, being offered on part furnished basis.

Call Jorgensen Turner Estate agents to arrange a viewing.

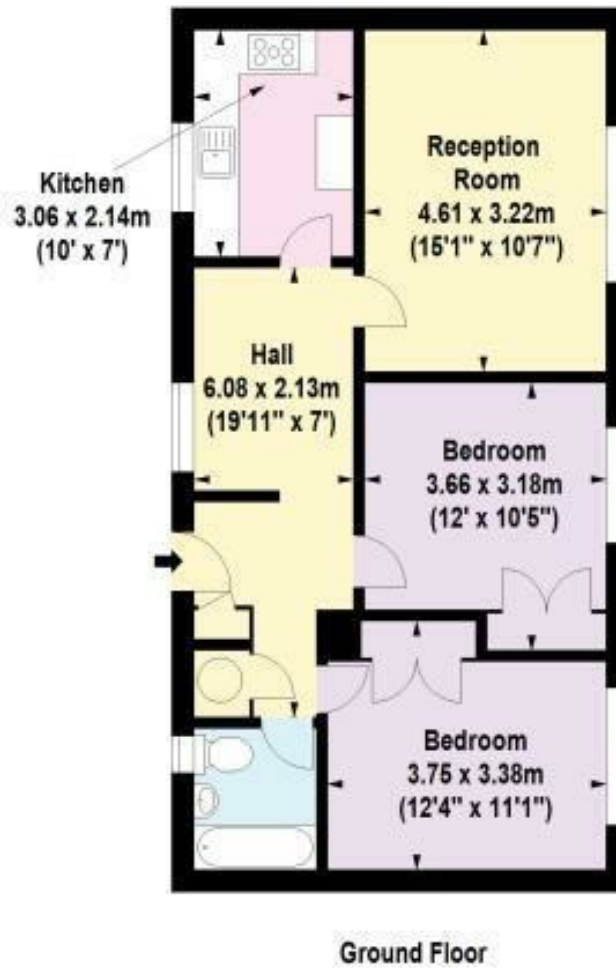
One weeks holding deposit will be required, 5 weeks damage deposit, EPC rating D, council tax band C

Area Map





Floor Plan



For Identification Purposes Only, Not To Scale. © www.totalvista.uk 2021

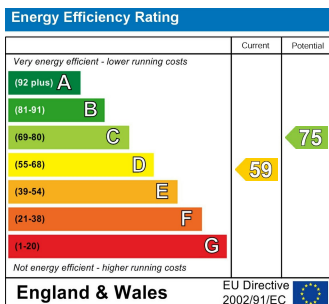


Honeypot Lane, HA7

Approx. Gross Internal Area
62.71 Sq M - 675 Sq Ft



Energy Efficiency Graph



Viewing

Please contact our Lettings QP Office on 0207 604 4040 if you wish to arrange a viewing appointment for this property or require further information.

For further information contact:

Lettings QP, 2a Brondesbury Road, London, NW6 6AS

Tel: 0207 604 4040 Email: info@jorgensenturner.com <https://www.jorgensenturner.com/>

Disclaimer

These particulars, whilst believed to be accurate are set out as a general outline only for guidance and do not constitute any part of an offer or contract. Intending purchasers should not rely on them as statements of representation of fact, but must satisfy themselves by inspection or otherwise as to their accuracy. No person in this firm's employment has the authority to make or give any representation or warranty in respect of the property.