

HEATING AND HOT
WATER INCLUDED
£1,980 Per Month

HEATING AND HOT WATER INCLUDED

£1,980 Per Month



Summary Description

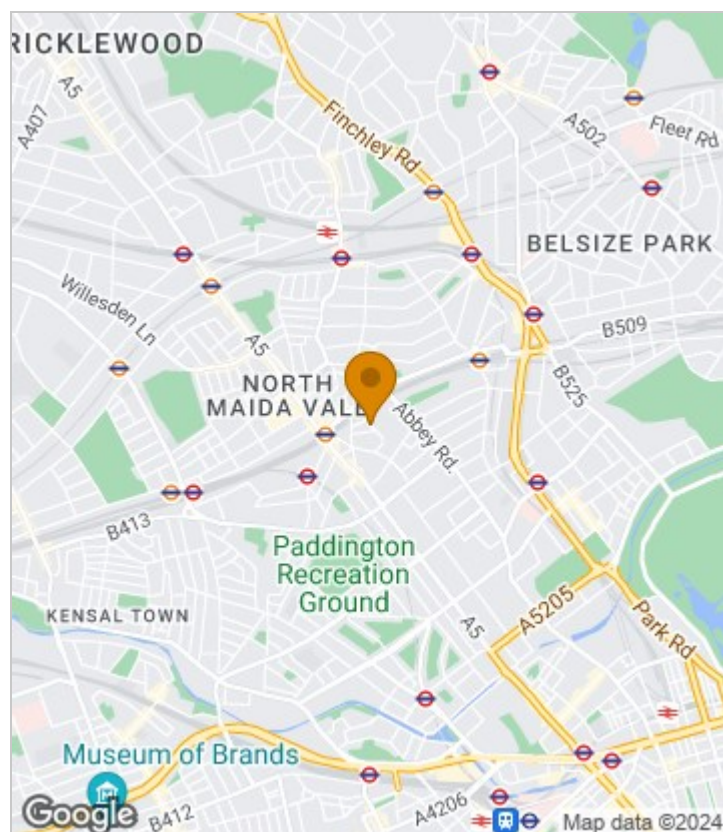
Charming two bedroom second floor flat is available now. Property features spacious bathroom with big walk in shower, modern and vibrant kitchen, good size lounge that comes with fitted wardrobes and two bedrooms.

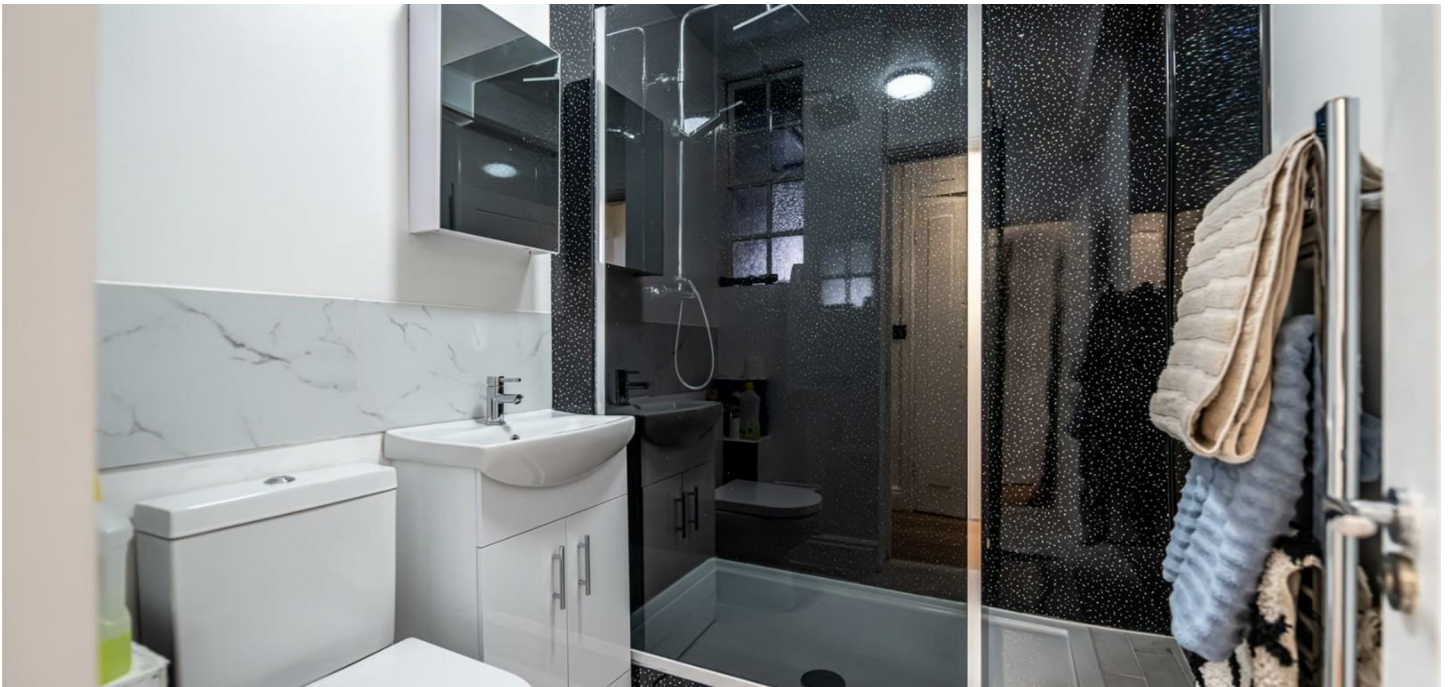
Property comes furnished, has wooden floor throughout as it just been fully renovated. Other features are big windows and bright lounge, neutral décor. This property comes with HEATING AND HOT WATER INCLUDED IN RENTAL PRICE. This building also comes with care taker that is available Monday to Friday.

Easy access to many shops and restaurants, flat is located close to Kilburn High road overground station, easy access to Kilburn park underground station, easy access to many buses routes.

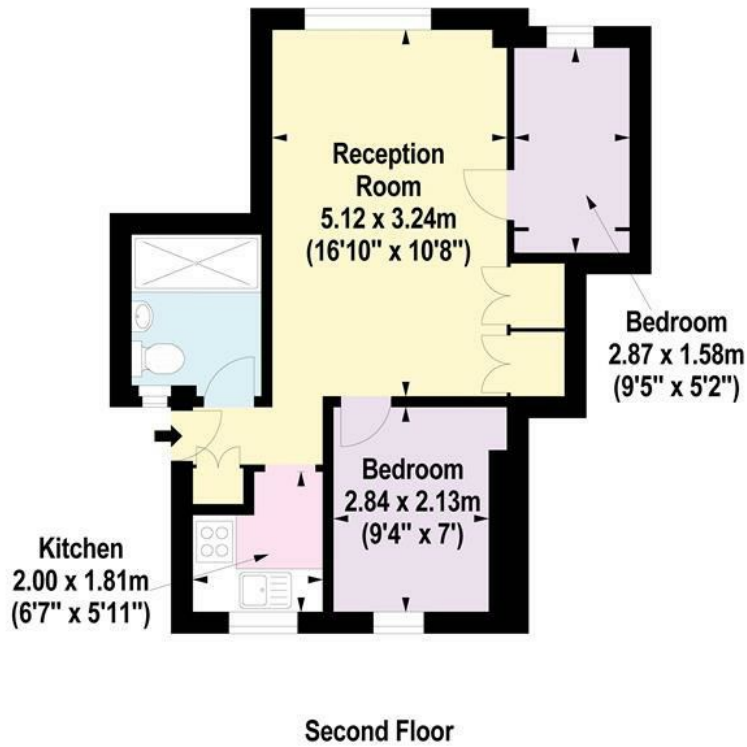
EPC rating C, council tax band C, one week`s holding deposit required, 5 weeks damage deposit required.

Area Map





Floor Plan



For Identification Purposes Only. Not To Scale. © www.totalvista.uk 2023

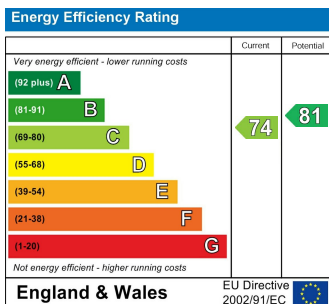


Hillsborough Court, NW6

Approx. Gross Internal Area
39.76 Sq M - 428 Sq Ft



Energy Efficiency Graph



Viewing

Please contact our Lettings QP Office on 0207 604 4040 if you wish to arrange a viewing appointment for this property or require further information.

- Two bedroom flat
- New kitchen
- Great storage
- Second floor
- heating and hot water included
- New bathroom
- New flooring
- Bright flat
- Lift

For further information contact:

Lettings QP, 2a Brondesbury Road, London, NW6 6AS

Tel: 0207 604 4040 Email: info@jorgensenturner.com <https://www.jorgensenturner.com/>

Disclaimer

These particulars, whilst believed to be accurate are set out as a general outline only for guidance and do not constitute any part of an offer or contract. Intending purchasers should not rely on them as statements of representation of fact, but must satisfy themselves by inspection or otherwise as to their accuracy. No person in this firm's employment has the authority to make or give any representation or warranty in respect of the property.

