

Canterbury Road Flat,  
London

£2,150 Per Month

 2  2  1  C

# Canterbury Road Flat, London

£2,150 Per Month



## Summary Description

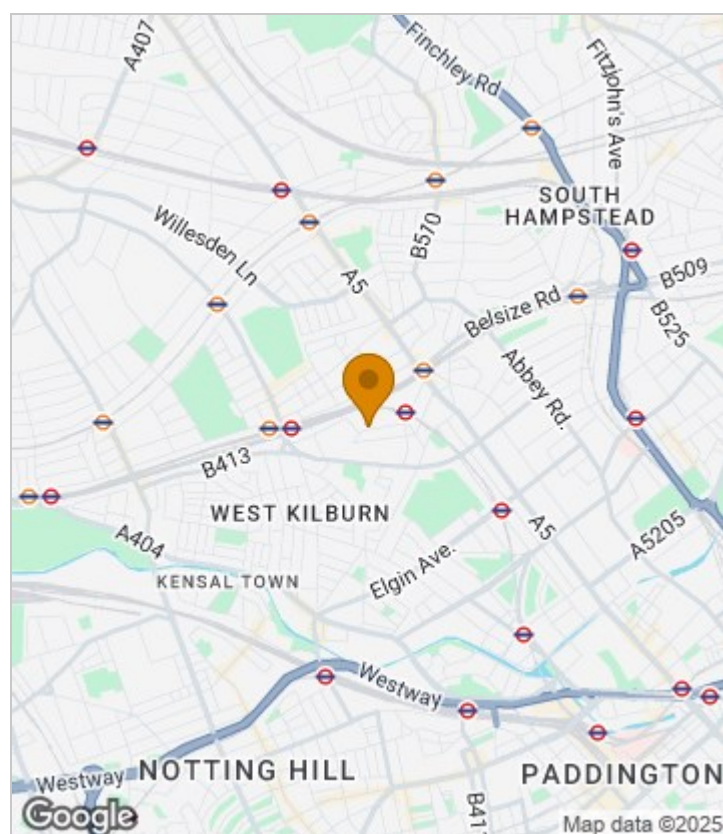
Two double bedroom conversion flat in this convenient location close to transport links, shopping facilities and amenities. Boasting two double bedrooms, two bathrooms, one en suite, double glazing, gas central heating, fully fitted modern kitchen and fitted bathroom.

This property comes with brand new carpets and full redecoration done. Other features are good fitted storage, tons of light, EPC rating C.

Walking distance to Queens Park Station, Kilburn Park station and Kilburn High Road station. Council tax band C, one week's holding deposit required, 5 weeks damage deposit required.

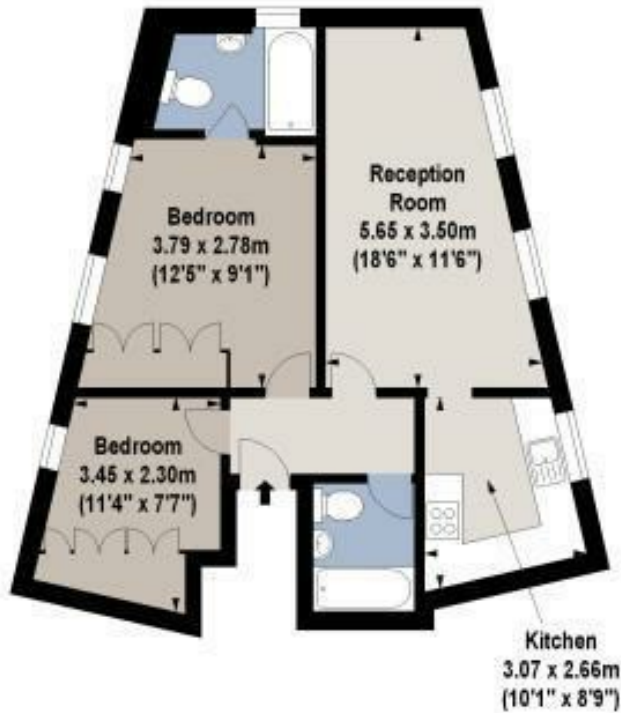
Call Jorgensen Turner to arrange a viewing.

## Area Map





# Floor Plan



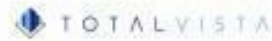
Fourth Floor

For Identification Purposes Only. Not To Scale. © www.totalvista.uk 2017

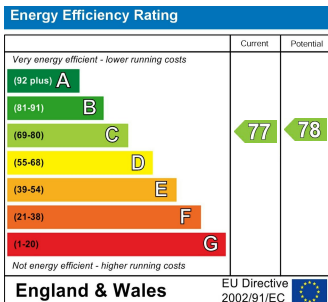


Canterbury Terrace, NW6

Approx. Gross Internal Area  
56.76 Sq M - 611 Sq Ft



## Energy Efficiency Graph



## Viewing

Please contact our Lettings QP Office on 0207 604 4040 if you wish to arrange a viewing appointment for this property or require further information.

For further information contact:

Lettings QP, 2a Brondesbury Road, London, NW6 6AS

Tel: 0207 604 4040 Email: [info@jorgensenturner.com](mailto:info@jorgensenturner.com) <https://www.jorgensenturner.com/>



## Disclaimer

These particulars, whilst believed to be accurate are set out as a general outline only for guidance and do not constitute any part of an offer or contract. Intending purchasers should not rely on them as statements of representation of fact, but must satisfy themselves by inspection or otherwise as to their accuracy. No person in this firm's employment has the authority to make or give any representation or warranty in respect of the property.