



jt | JORGENSENTURNER



Kilburn High Road,  
Kilburn, London

£1,695 Per Month



jt |  1  1  1  C jt

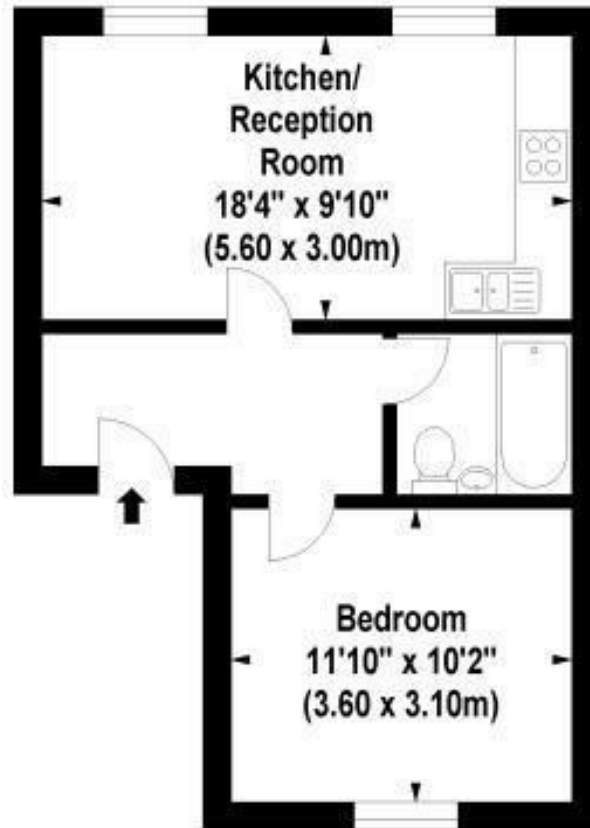




## Floor Plan

### Kilburn High Road, NW6

Approx. Gross Internal Area \*  
412 Sq Ft - 38.27 Sq M



First Floor

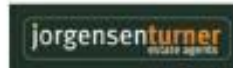
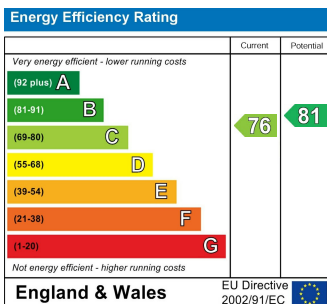


Illustration For Identification Purposes Only. Not To Scale  
\*Floorplan Drawn According To RICS Guidelines  
© www.aikenmcray.com 2014 (rm)

## Energy Efficiency Graph



## Viewing

Please contact our Lettings QP Office on 0207 604 4040 if you wish to arrange a viewing appointment for this property or require further information.

- Modern one bedroom flat
- Good size bedroom
- Modern bathroom
- High ceiling
- Double glazed windows
- Great transport links
- Close to shops and restaurants

For further information contact:

Lettings QP, 2a Brondesbury Road, London, NW6 6AS

Tel: 0207 604 4040 Email: [info@jorgensenturner.com](mailto:info@jorgensenturner.com) <https://www.jorgensenturner.com/>

## Disclaimer

These particulars, whilst believed to be accurate are set out as a general outline only for guidance and do not constitute any part of an offer or contract. Intending purchasers should not rely on them as statements of representation of fact, but must satisfy themselves by inspection or otherwise as to their accuracy. No person in this firm's employment has the authority to make or give any representation or warranty in respect of the property.

