



jt | JORGENSENTURNER



Gorefield Place Kilburn  
Park, London

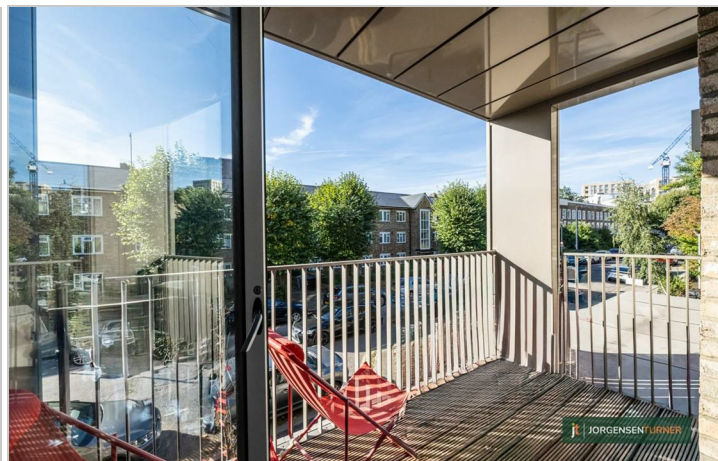
£2,595 Per Month



jt 2 2 1 B jt

# Gorefield Place Kilburn Park, London

£2,595 Per Month



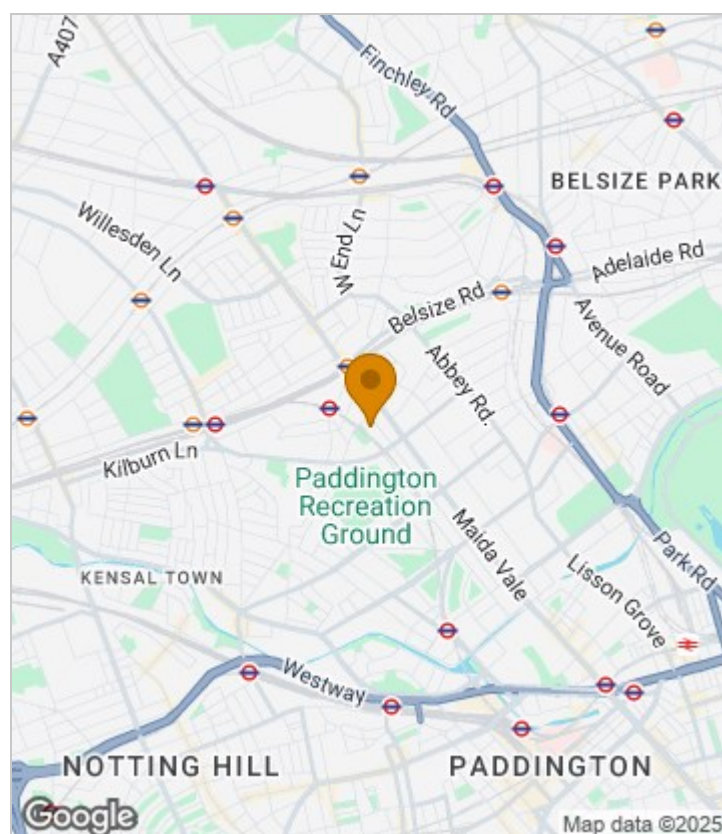
## Summary Description

This fantastic example of a modern purpose built apartment located on the borders of North Maida Vale and Kilburn Park. The property boasts two double bedrooms with an en-suite to the master bedroom, a spacious open plan fully fitted modern kitchen / reception leading onto Two balconies. The property also offers a large family bathroom and has fantastic storage space throughout. Other features are tons of light, secured block entry system. Property comes unfurnished.

Located conveniently walking distance to Kilburn Park Station (Bakerloo Line) and bus links towards Central London, West London and Brent Cross.

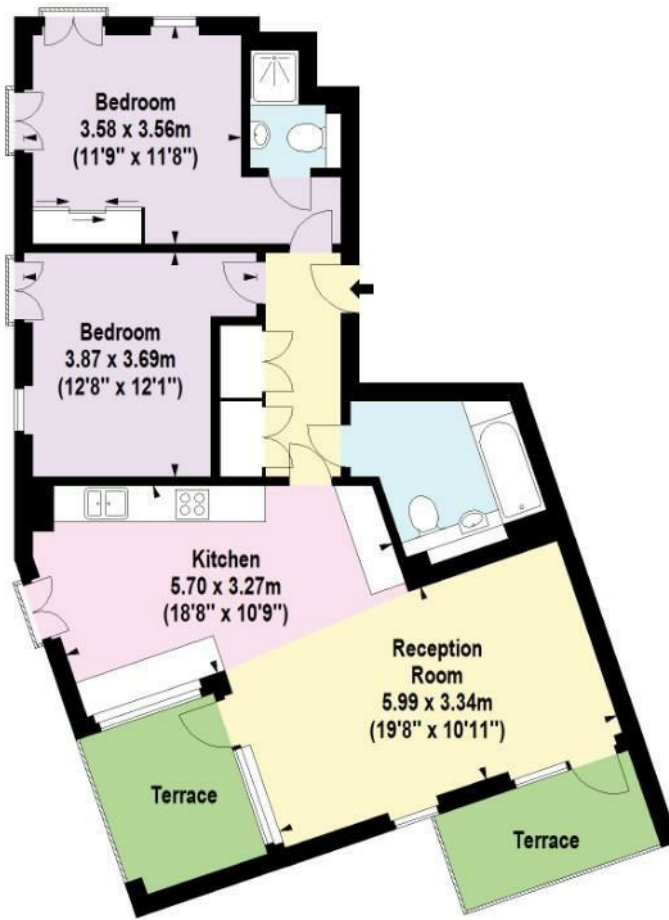
One weeks holding deposit required, 5 weeks damage deposit is required, EPC rating B, council tax is C.

## Area Map





# Floor Plan



First Floor



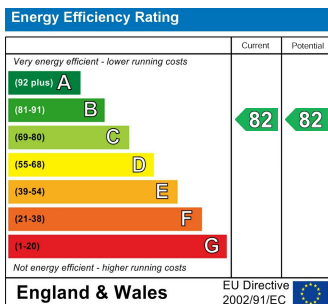
For Identification Purposes Only. Not To Scale. © www.totalvista.uk 2019

Gorefield Place, NW6

Approx. Gross Internal Area  
82.40 Sq M - 887 Sq Ft



## Energy Efficiency Graph



## Viewing

Please contact our Lettings QP Office on 0207 604 4040 if you wish to arrange a viewing appointment for this property or require further information.

- Two bedroom
- Two bathroom
- Two balconies
- Open plan
- Modern
- Bright flat

For further information contact:

Lettings QP, 2a Brondesbury Road, London, NW6 6AS

Tel: 0207 604 4040 Email: [info@jorgensenturner.com](mailto:info@jorgensenturner.com) <https://www.jorgensenturner.com/>

## Disclaimer

These particulars, whilst believed to be accurate are set out as a general outline only for guidance and do not constitute any part of an offer or contract. Intending purchasers should not rely on them as statements of representation of fact, but must satisfy themselves by inspection or otherwise as to their accuracy. No person in this firm's employment has the authority to make or give any representation or warranty in respect of the property.

