



jt | JORGENSENTURNER



Chichester Road, Kilburn  
Park, NW6

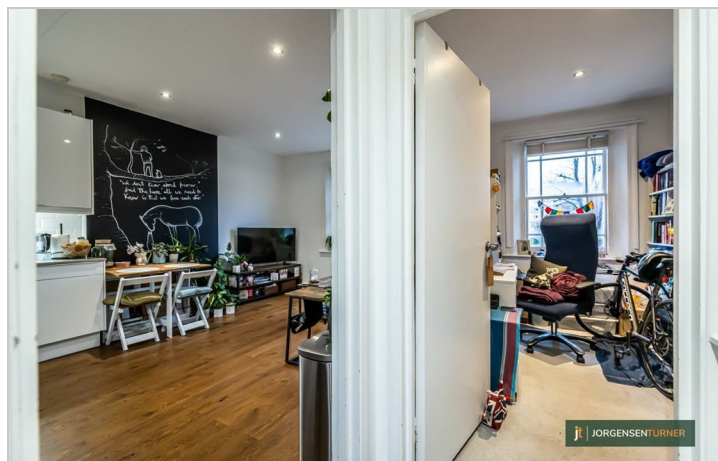
£2,150 Per Month



jt 2 1 1 D jt

# Chichester Road, Kilburn Park, NW6

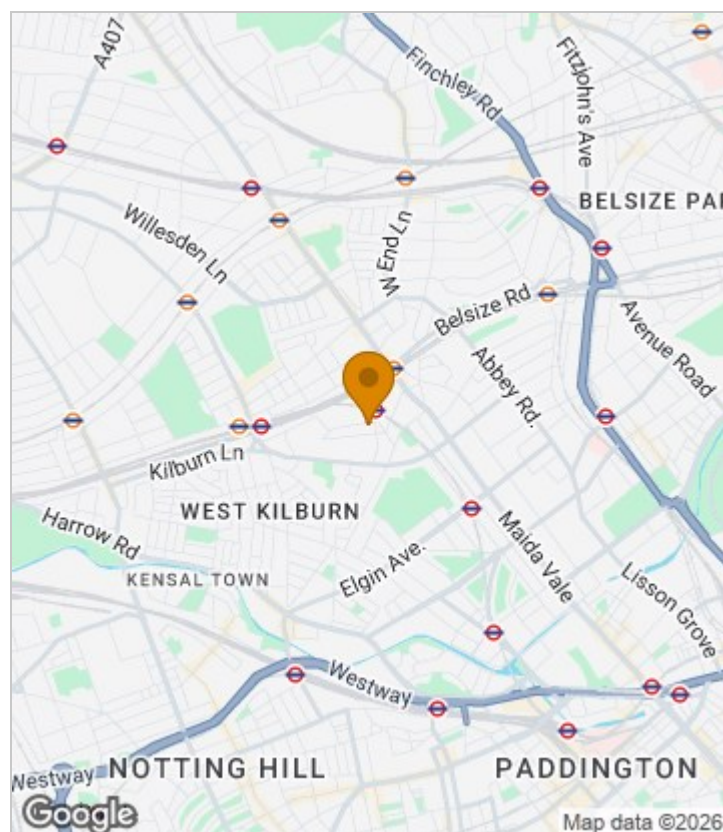
£2,150 Per Month



## Summary Description

Modern, bright, spacious immaculately designed, two double bedroom flat set within a well kept period building. This property benefits from a large open plan reception/dining room leading with large sash windows. The bedrooms are both doubles and benefit from high ceilings and ample light. Further benefits include wooden flooring, fitted storage and a fully tiled contemporary bathroom and modern kitchen. Chichester Road is a quiet residential street and is within very close proximity to Kilburn Park and Queens Park underground stations (Bakerloo Line & Overground Services). Call Jorgensen Turner Estate Agent to arrange a viewing. To secure property 1 week's holding deposit will be required, 5 weeks damage deposit will be required. Council band C.

## Area Map

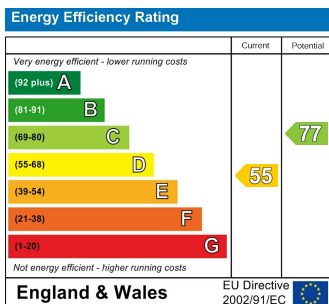




# Floor Plan



## Energy Efficiency Graph



## Viewing

Please contact our Lettings QP Office on 0207 604 4040 if you wish to arrange a viewing appointment for this property or require further information.

- Two bedroom flat
- Modern kitchen
- High ceiling
- Open plan lounge
- First floor
- Very close to the Bakerloo line

For further information contact:

Lettings QP, 2a Brondesbury Road, London, NW6 6AS

Tel: 0207 604 4040 Email: [info@jorgensenturner.com](mailto:info@jorgensenturner.com) <https://www.jorgensenturner.com/>

## Disclaimer

These particulars, whilst believed to be accurate are set out as a general outline only for guidance and do not constitute any part of an offer or contract. Intending purchasers should not rely on them as statements of representation of fact, but must satisfy themselves by inspection or otherwise as to their accuracy. No person in this firm's employment has the authority to make or give any representation or warranty in respect of the property.

