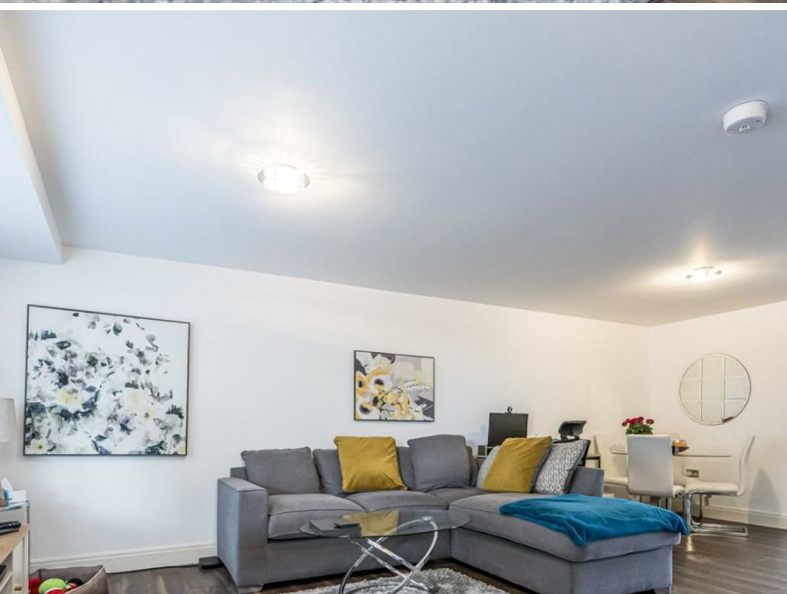




jt | JORGENSENTURNER



Brondesbury Road, NW6

£1,995 Per Month



jt 2 1 1 C jt

Brondesbury Road, NW6

£1,995 Per Month



Summary Description

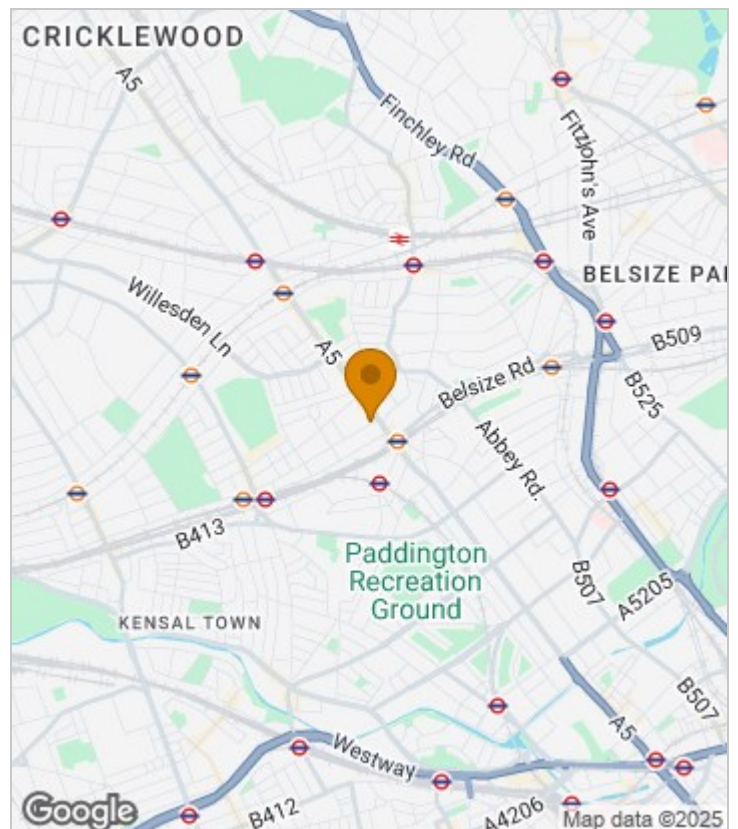
This beautifully presented two-bedroom apartment is available from 14th February. The property boasts a modern and bright interior with high-spec finishes throughout. It features a fully fitted kitchen and bathroom, double-glazed windows, and stylish wooden flooring. The apartment is offered unfurnished and benefits from a lift and a dedicated caretaker responsible for maintaining the building. Please note, there is no parking available with this property.

Ideally located, the apartment is well-connected to central London via nearby Overground and Underground stations, as well as multiple bus routes.

To arrange a viewing, please contact Jorgensen Turner Estate Agents.

A one-week holding deposit and a five-week damage deposit will be required. EPC rating: B. Council Tax Band: C.

Area Map





Floor Plan



Second Floor

For Identification Purposes Only. Not To Scale. © www.totalvista.uk 2020

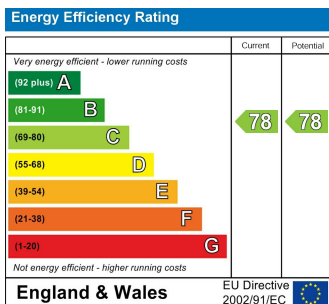


Brondesbury Road, NW6

Approx. Gross Internal Area
64.72 Sq M - 589 Sq Ft



Energy Efficiency Graph



Viewing

Please contact our Lettings QP Office on 0207 604 4040 if you wish to arrange a viewing appointment for this property or require further information.

For further information contact:

Lettings QP, 2a Brondesbury Road, London, NW6 6AS

Tel: 0207 604 4040 Email: info@jorgensenturner.com <https://www.jorgensenturner.com/>



Disclaimer

These particulars, whilst believed to be accurate are set out as a general outline only for guidance and do not constitute any part of an offer or contract. Intending purchasers should not rely on them as statements of representation of fact, but must satisfy themselves by inspection or otherwise as to their accuracy. No person in this firm's employment has the authority to make or give any representation or warranty in respect of the property.