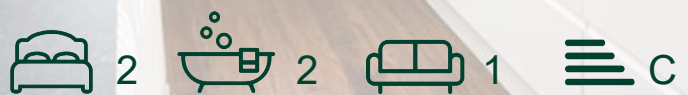




Cricklewood Broadway,
NW2

£1,899 Per Month



Cricklewood Broadway, NW2

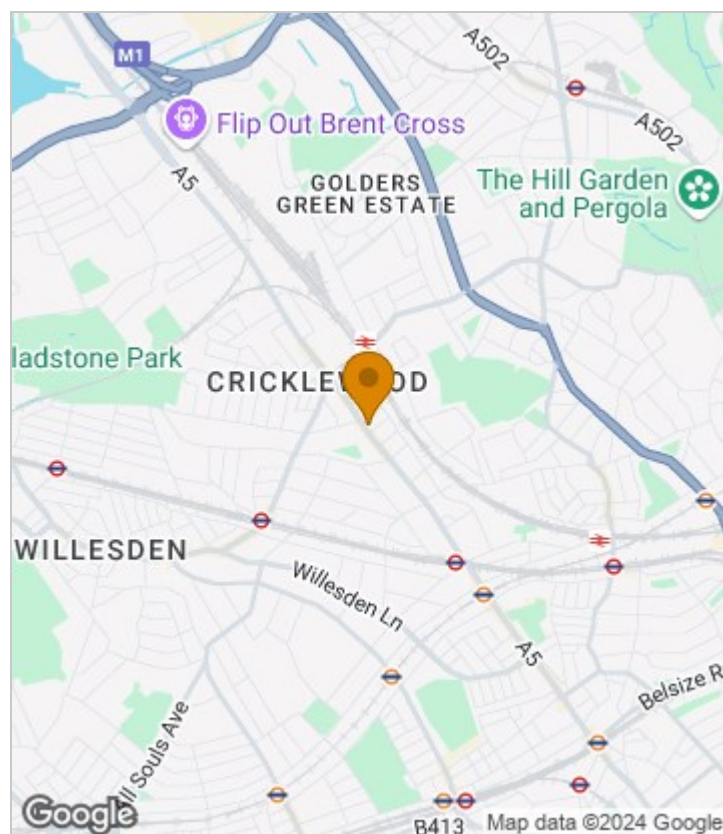
£1,899 Per Month



Summary Description

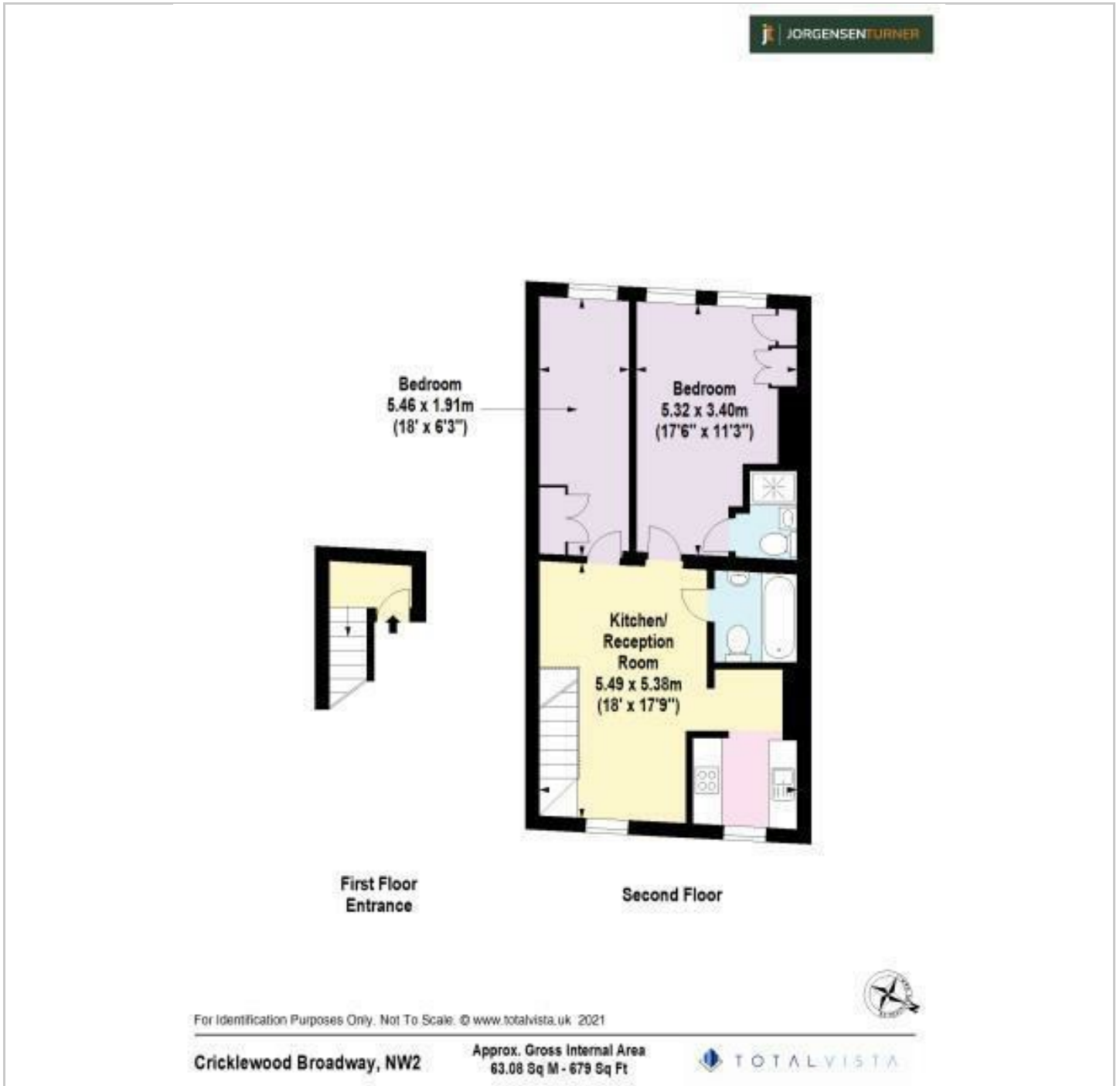
This lovely and modern two double bedroom and two bathroom flat is available 27th of September. This bright and airy flat offers great space, wooden floor throughout, very good storage, double glazed windows, modern kitchen with a dish washer. Flat is fully furnished. Property is located on vibrant Cricklewood Broadway offering great connections to Kilburn, Willesden Green or Cricklewood stations and many bus routes. To arrange a viewing please call Jorgensen Estate Agents. Council tax band C, EPC Rating is C, one week's holding deposit required, 5 week's damage deposit required

Area Map

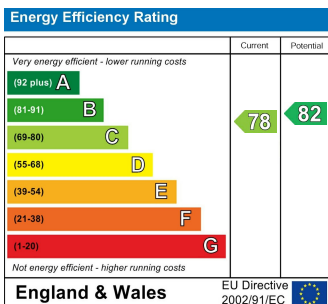




Floor Plan



Energy Efficiency Graph



Viewing

Please contact our Lettings QP Office on 0207 604 4040 if you wish to arrange a viewing appointment for this property or require further information.

For further information contact:

Lettings QP, 2a Brondesbury Road, London, NW6 6AS

Tel: 0207 604 4040 Email: info@jorgensenturner.com <https://www.jorgensenturner.com/>

Disclaimer

These particulars, whilst believed to be accurate are set out as a general outline only for guidance and do not constitute any part of an offer or contract. Intending purchasers should not rely on them as statements of representation of fact, but must satisfy themselves by inspection or otherwise as to their accuracy. No person in this firm's employment has the authority to make or give any representation or warranty in respect of the property.

