

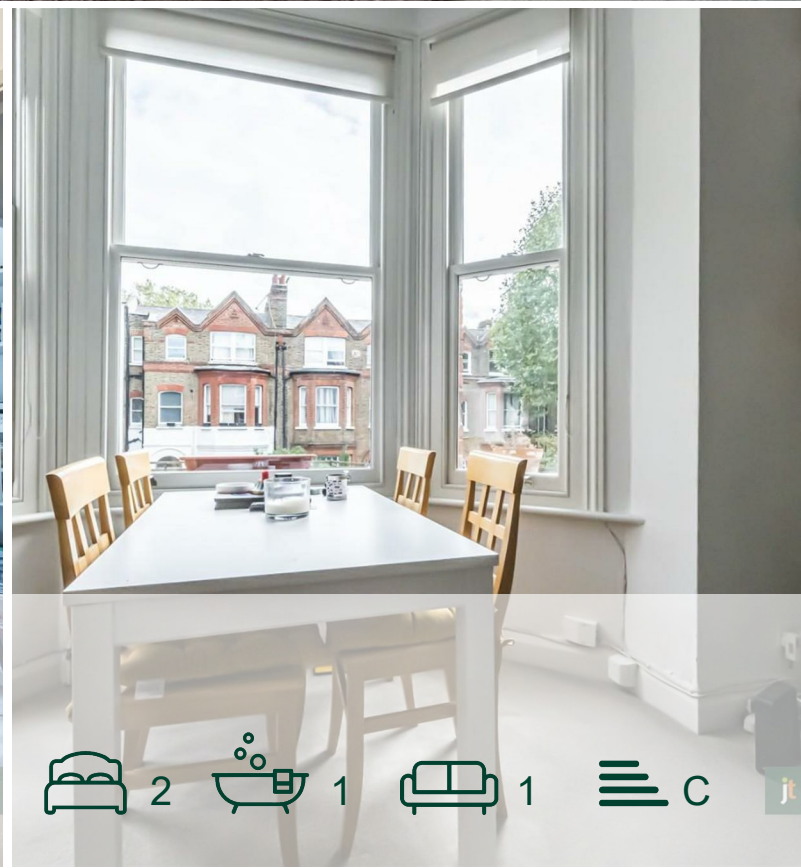


jt | JORGENSENTURNER



Brondesbury Villas,
Queens Park

£2,150 Per Month



jt |  2  1  1  C

Brondesbury Villas, Queens Park

£2,150 Per Month



Summary Description

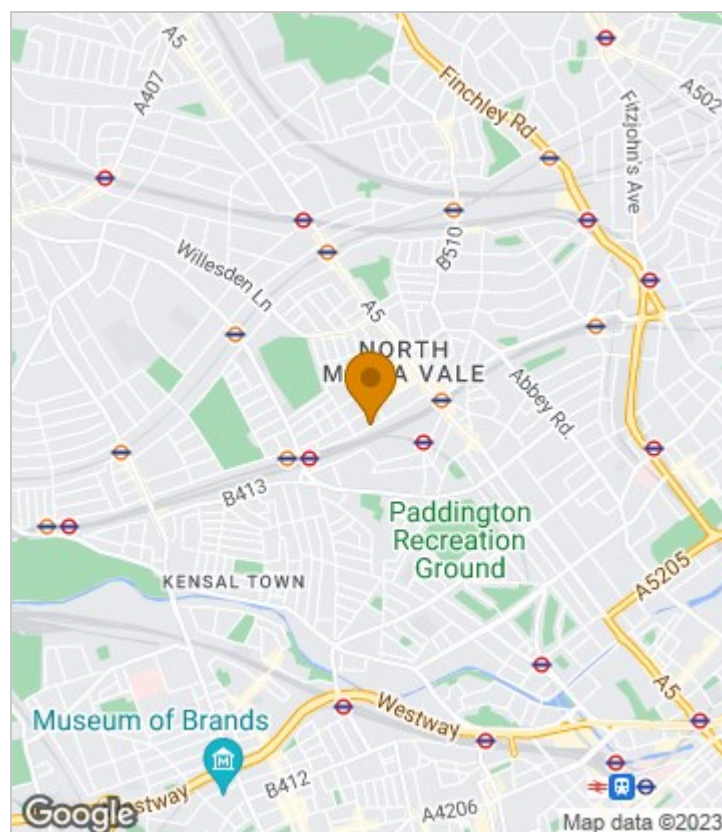
A fantastic two bedroom apartment in this lovely period building along a sought-after street Brondesbury Villas.

This property comprises a spacious lounge with large windows giving access to plenty of light, two double bedrooms, fully fitted kitchen with integrated appliances and walk-in pantry and a fully fitted modern three piece updated bathroom. Other features are high ceiling, neutral décor, fitted storage. Available from 2nd of December.

Ideally located close to Queens Park underground (Bakerloo Line and overground - Zone 2) and also Kilburn High Road overground. To arrange a viewing please contact Jorgensen Turner estate agents.

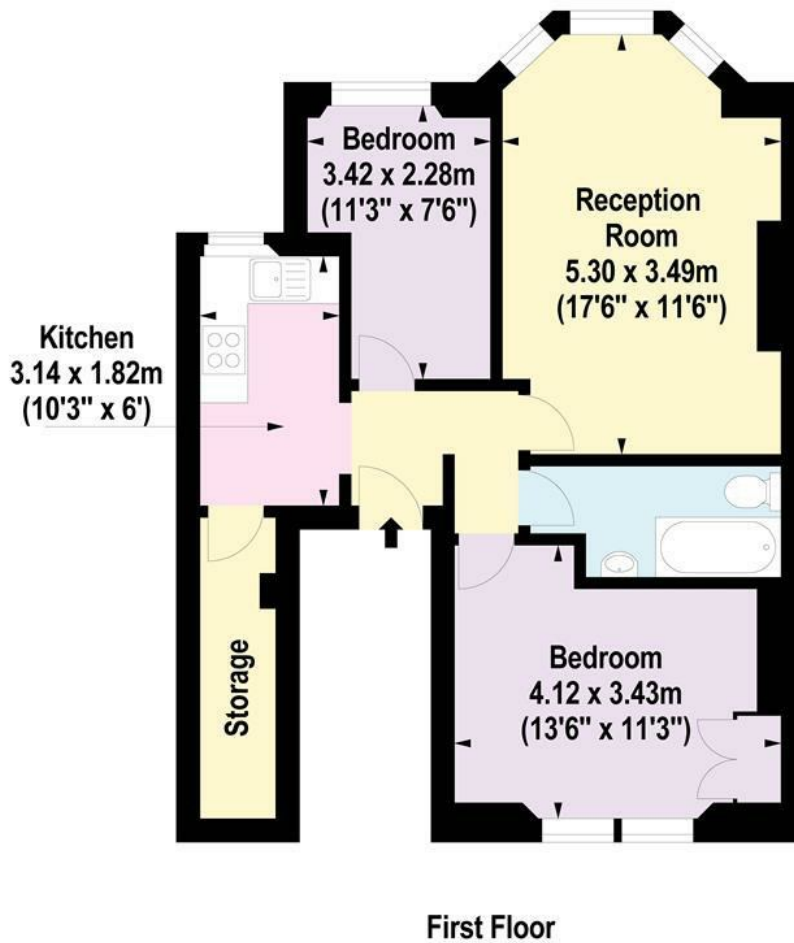
EPC rating C, council tax band D, one week's holding deposit will be required, 5 weeks damage deposit will be required.

Area Map





Floor Plan



For Identification Purposes Only. Not To Scale. © www.totalvista.uk 2023

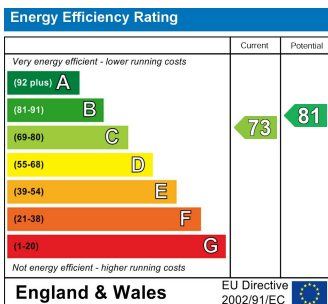


Brondesbury Villas, NW6

Approx. Gross Internal Area
55.55 Sq M - 598 Sq Ft



Energy Efficiency Graph



Viewing

Please contact our Lettings QP Office on 0207 604 4040 if you wish to arrange a viewing appointment for this property or require further information.

For further information contact:

Lettings QP, 2a Brondesbury Road, London, NW6 6AS

Tel: 0207 604 4040 Email: info@jorgensenturner.com <https://www.jorgensenturner.com/>

Disclaimer

These particulars, whilst believed to be accurate are set out as a general outline only for guidance and do not constitute any part of an offer or contract. Intending purchasers should not rely on them as statements of representation of fact, but must satisfy themselves by inspection or otherwise as to their accuracy. No person in this firm's employment has the authority to make or give any representation or warranty in respect of the property.

