



jorgensenturner  
estate agents



Brondesbury Villas,  
Queens Park

£2,650 Per Month



# Brondesbury Villas, Queens Park

£2,650 Per Month

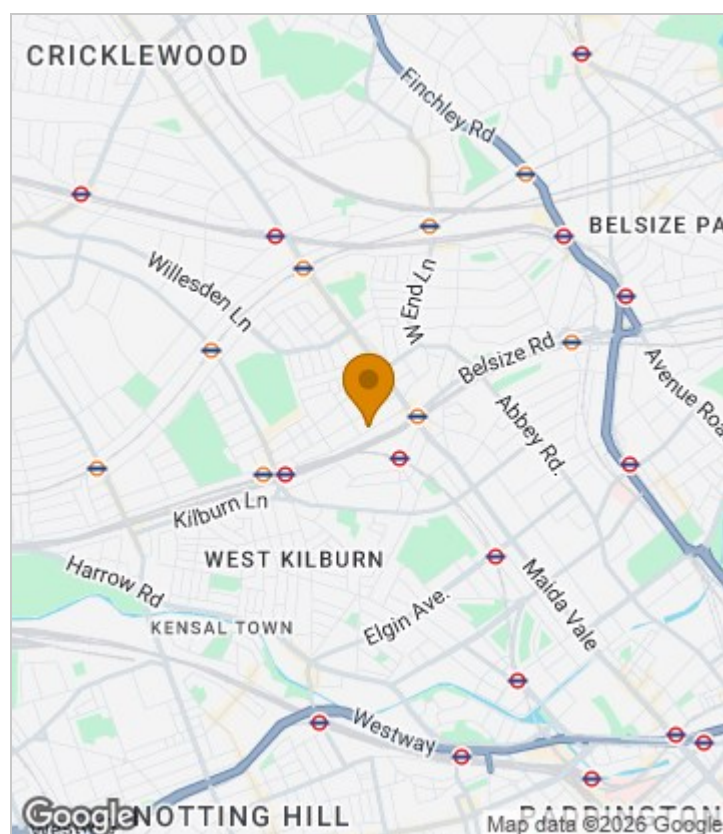


## Summary Description

A wonderful two double bedroom and two bathroom first floor flat set in a period property in the heart of Queens Park. The property features generous and well balanced accommodation which includes a good size reception room leading to a large eat-in kitchen with granite work tops, two good size double bedrooms both with fitted wardrobes and an en suite to the master bedroom. The property is available from the 1st of June. Located in really well connected to Central London is close to Kilburn Park and Queens Park stations, Kilburn High Road overground and Queens Park overground stations plus many different busses

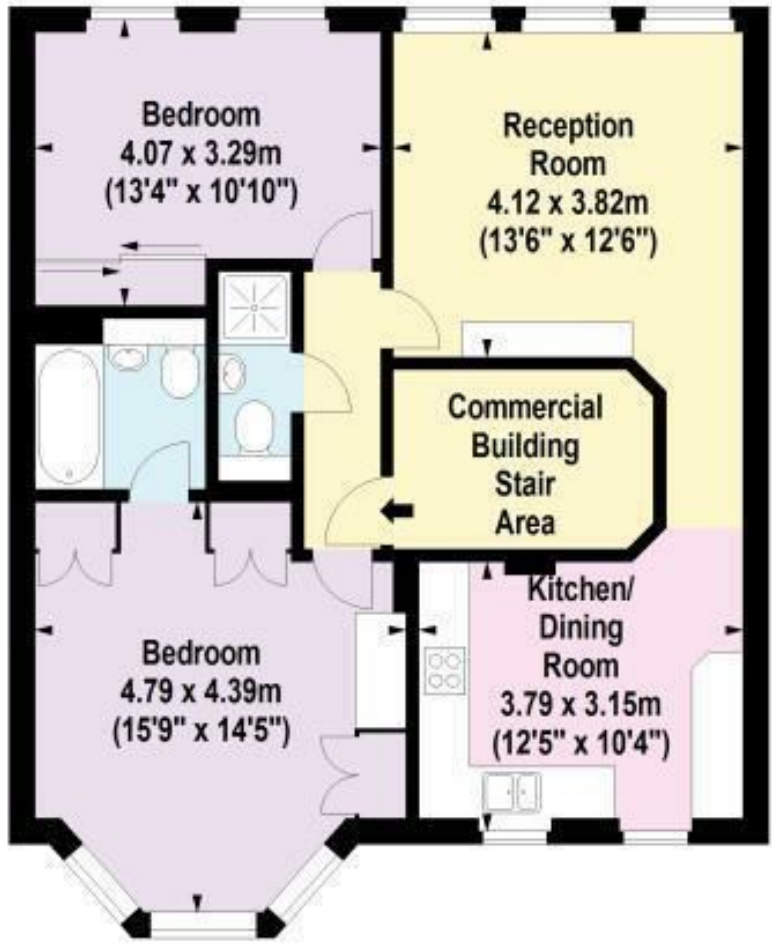
One week's holding deposit required, 5 weeks damage deposit required, EPC rating C, council tax band D

## Area Map





# Floor Plan



First Floor

For Identification Purposes Only. Not To Scale. © www.totalvista.uk 2020

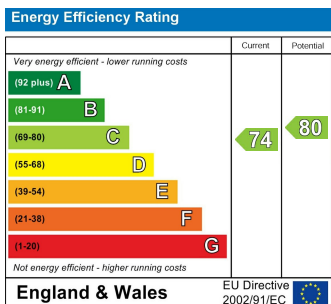


**Brondesbury Villas, NW6**

Approx. Gross Internal Area  
71.72 Sq M - 772 Sq Ft



## Energy Efficiency Graph



## Viewing

Please contact our Lettings QP Office on 0207 604 4040 if you wish to arrange a viewing appointment for this property or require further information.

For further information contact:

Lettings QP, 2a Brondesbury Road, London, NW6 6AS

Tel: 0207 604 4040 Email: [info@jorgensenturner.com](mailto:info@jorgensenturner.com) <https://www.jorgensenturner.com/>

## Disclaimer

These particulars, whilst believed to be accurate are set out as a general outline only for guidance and do not constitute any part of an offer or contract. Intending purchasers should not rely on them as statements of representation of fact, but must satisfy themselves by inspection or otherwise as to their accuracy. No person in this firm's employment has the authority to make or give any representation or warranty in respect of the property.