



jt | JORGENSENTURNER



Brondesbury Road, Kilburn

£1,995 Per Month



2 1 1 C

# Brondesbury Road, Kilburn

£1,995 Per Month

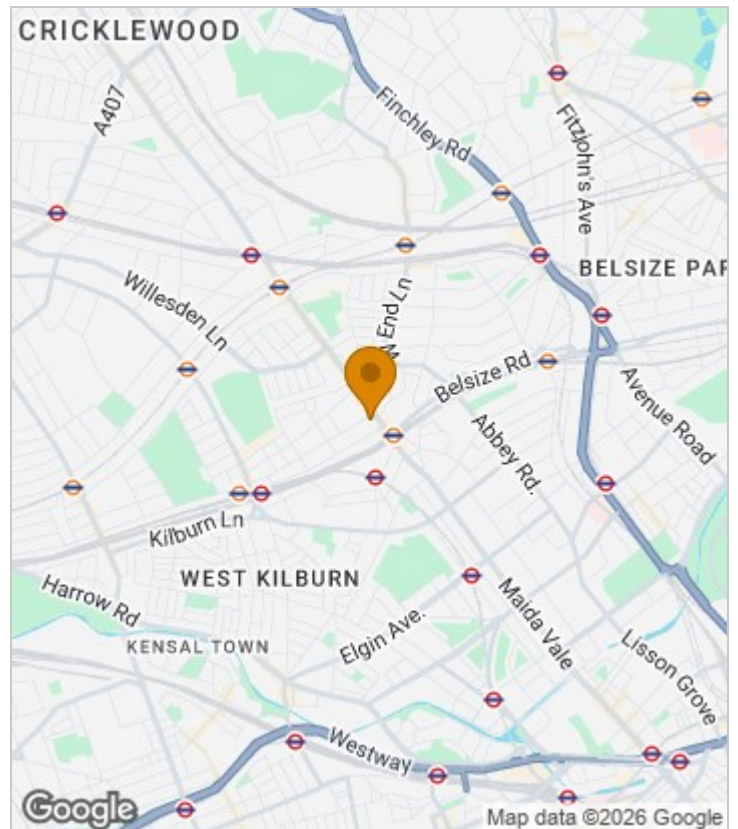


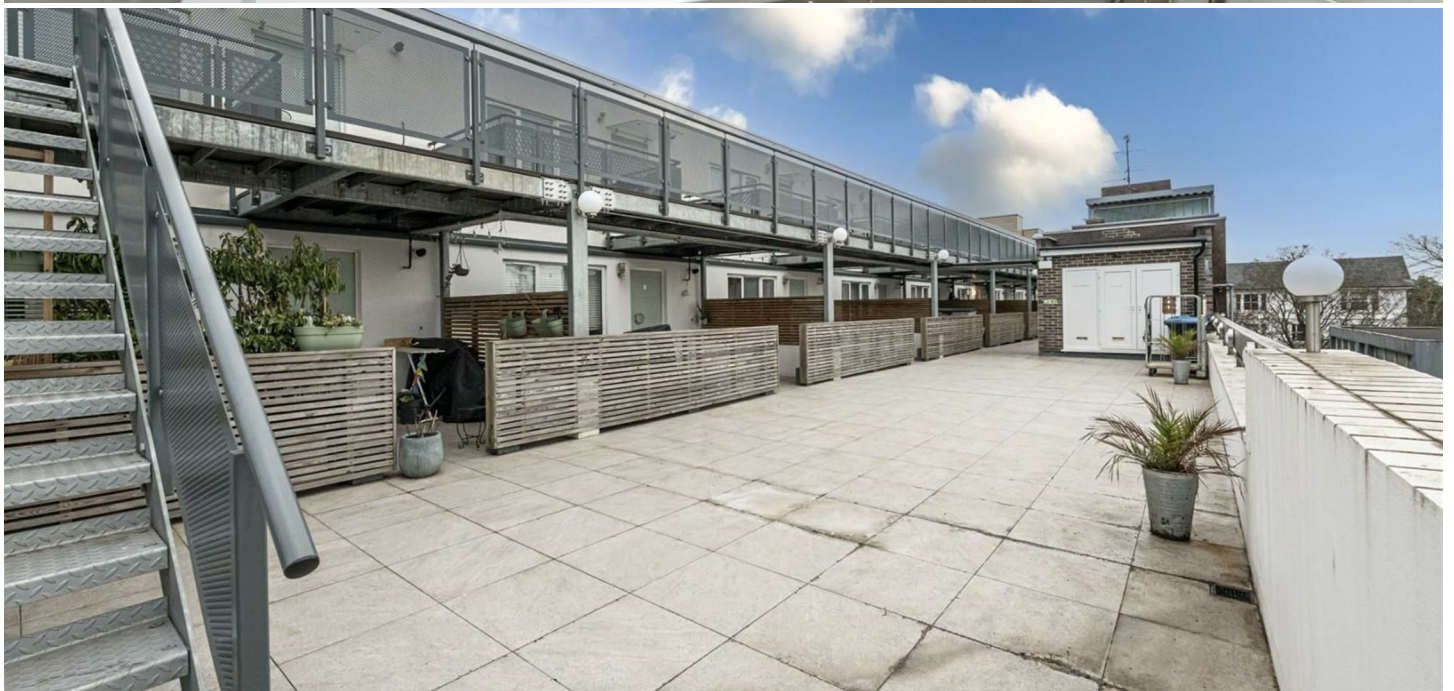
## Summary Description

Modern and bright two double bedroom flat is available from 12th of July. Offering open plan modern kitchen, wooden floor throughout, both bedrooms are very similar size, both bedrooms comes with fitted wardrobes but the rest of the property is unfurnished. Other features are front private terrace and an additional balcony at the back. Flat is very bright, has two double glazed windows and really good EPC rating C. THIS PROPERTY DOES NOT HAVE PARKING OPTION. Comes with white goods.

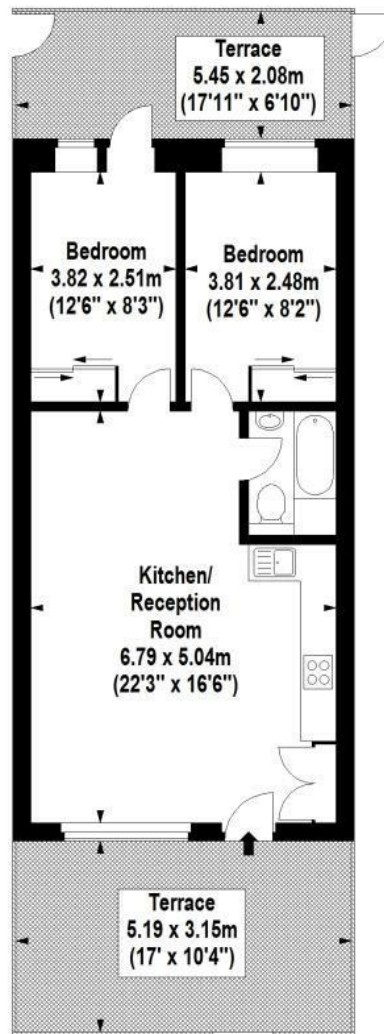
Council tax band C, one week`s holding deposit required, 5 weeks damage deposit required.

## Area Map





# Floor Plan



Second Floor

For Identification Purposes Only. Not To Scale. © www.totalvista.uk 2020

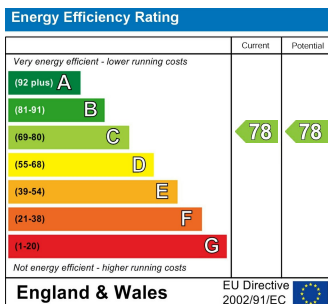


Brondesbury Road, NW6

Approx. Gross Internal Area  
54.72 Sq M - 589 Sq Ft



## Energy Efficiency Graph



## Viewing

Please contact our Lettings QP Office on 0207 604 4040 if you wish to arrange a viewing appointment for this property or require further information.

- Two double bedrooms
- Double glazed windows
- Laminate floor throughout
- Care taker
- Amazing travel links to central London
- No option to park a car

For further information contact:

Lettings QP, 2a Brondesbury Road, London, NW6 6AS

Tel: 0207 604 4040 Email: [info@jorgensenturner.com](mailto:info@jorgensenturner.com) <https://www.jorgensenturner.com/>

## Disclaimer

These particulars, whilst believed to be accurate are set out as a general outline only for guidance and do not constitute any part of an offer or contract. Intending purchasers should not rely on them as statements of representation of fact, but must satisfy themselves by inspection or otherwise as to their accuracy. No person in this firm's employment has the authority to make or give any representation or warranty in respect of the property.