



Brondesbury Villas,  
London

£2,150 Per Month



# Brondesbury Villas, London

£2,150 Per Month

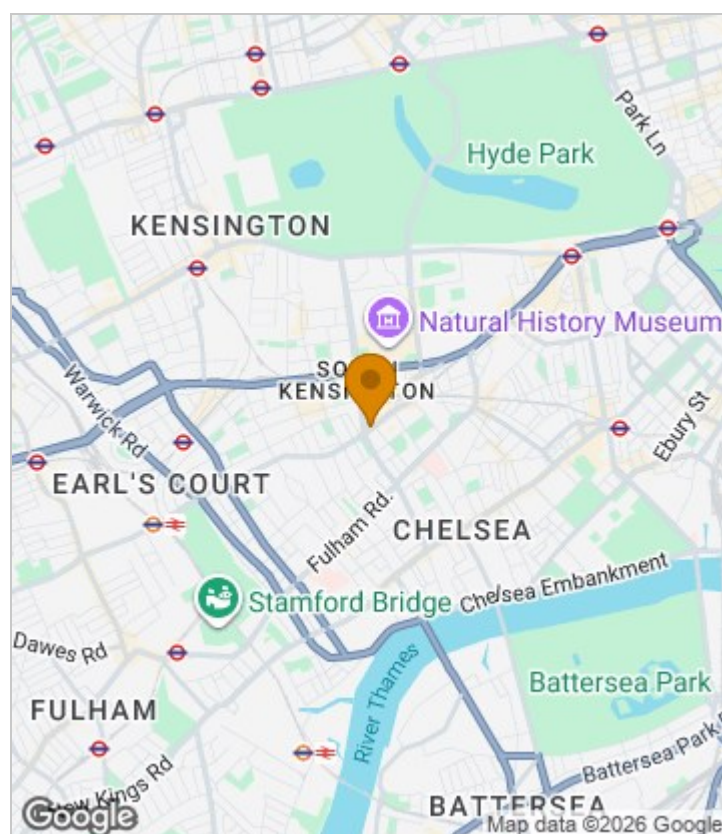


## Summary Description

Spacious and well balanced first floor two bedroom flat in a Victorian period conversion offering many period features is available from 25th of January. The flat comprises two double bedrooms, modern bathroom with bath tub, very large reception room, wooden floor, and a fully equipped kitchen with integrated appliances. Brondesbury Villas is a residential street with excellent transport links including Queens Park, Kilburn High Road and Kilburn Park stations moments away, many bus routes available for easy access to Central London. Easy access to many shops, bars and restaurants.

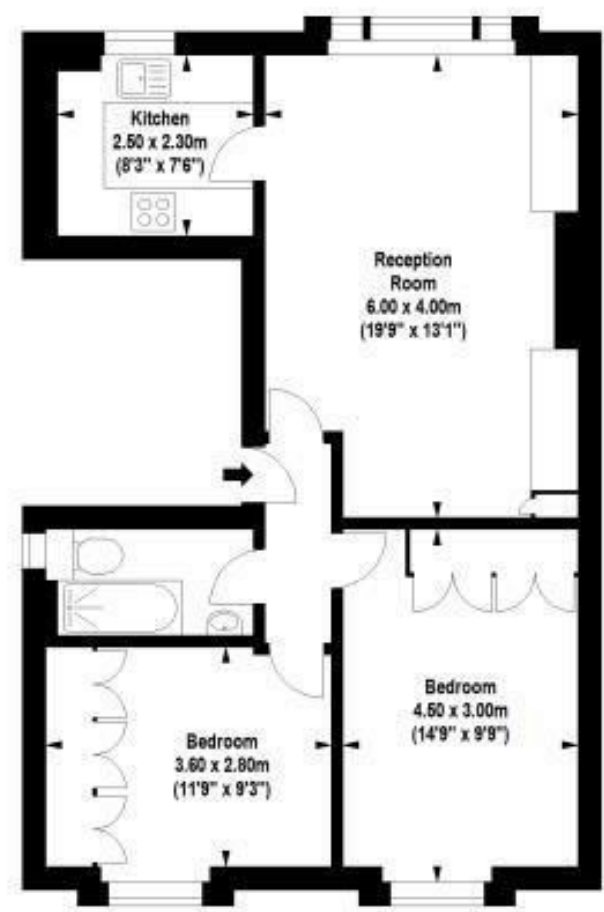
One week's holding deposit required, 5 weeks damage deposit required, EPC rating D, council tax band C. Call Jorgensen Turner estate agents to book a viewing.

## Area Map





# Floor Plan



First Floor

For Identification Purposes Only. Not To Scale. © www.alanaiken.com 2017

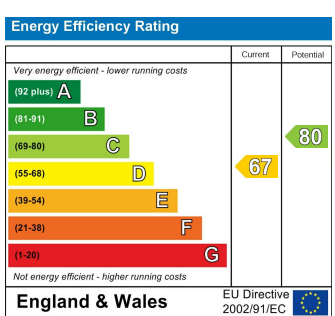


**Brondesbury Villas, NW6**

Approx. Gross Internal Area  
60.01 Sq M - 646 Sq Ft



## Energy Efficiency Graph



## Viewing

Please contact our Lettings QP Office on 0207 604 4040 if you wish to arrange a viewing appointment for this property or require further information.

For further information contact:

Lettings QP, 2a Brondesbury Road, London, NW6 6AS

Tel: 0207 604 4040 Email: [info@jorgensenturner.com](mailto:info@jorgensenturner.com) <https://www.jorgensenturner.com/>

## Disclaimer

These particulars, whilst believed to be accurate are set out as a general outline only for guidance and do not constitute any part of an offer or contract. Intending purchasers should not rely on them as statements of representation of fact, but must satisfy themselves by inspection or otherwise as to their accuracy. No person in this firm's employment has the authority to make or give any representation or warranty in respect of the property.