



jorgensenturner
estate agents



Dibdin House Maida Vale,
London

£1,750 Per Month



1 1 1 C

Dibdin House Maida Vale, London

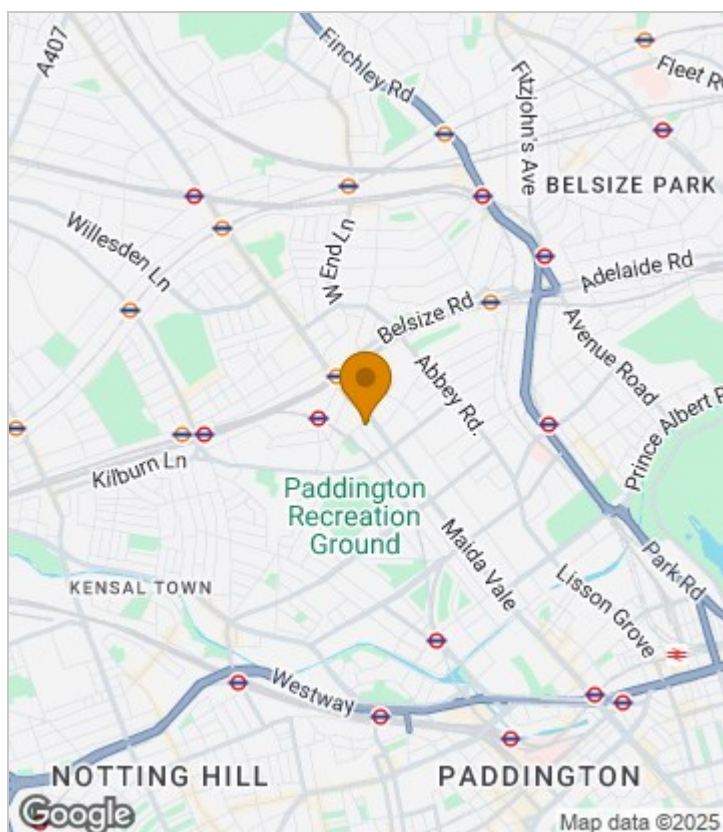
£1,750 Per Month



Summary Description

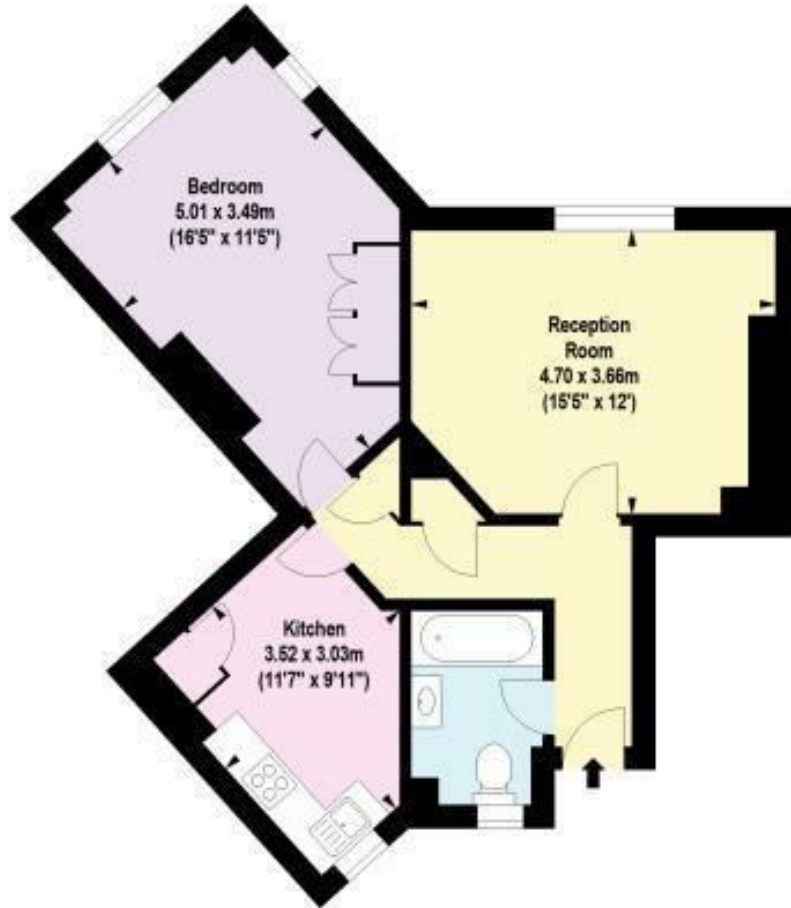
Lovely example of a spacious one bedroom purpose built flat within walking distance to Maida Vale station. Boasting a spacious reception with dining area, fully fitted spacious kitchen, fitted modern bathroom and large double bedroom that comes with big storage unit. Close proximity to Maida Vale station and easy access to Little Venice, St Johns Wood and Edgware Road. Really easy access to many shops, bars and restaurants. Overall floor space is 584 sq/ft, property is located on the third floor and building has no lift. Property is available from 20th of October. EPC rating C, Westminster council band C, one week's holding deposit required, 5 weeks damage deposit required. Call Jorgensen Turner estate agents to get more information.

Area Map





Floor Plan



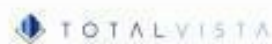
Third Floor



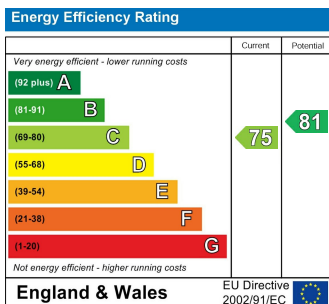
For Identification Purposes Only. Not To Scale. © www.totalvista.uk 2018

Dibdin House, Maida Vale, W9

Approx. Gross Internal Area
64.26 Sq M - 684 Sq Ft



Energy Efficiency Graph



Viewing

Please contact our Lettings QP Office on 0207 604 4040 if you wish to arrange a viewing appointment for this property or require further information.

- One Bedroom, Purpose Built
- Spacious Reception With Dining Area
- Furnished
- Maida Vale
- Fully Fitted Kitchen
- Good Condition Throughout

For further information contact:

Lettings QP, 2a Brondesbury Road, London, NW6 6AS

Tel: 0207 604 4040 Email: info@jorgensenturner.com <https://www.jorgensenturner.com/>

Disclaimer

These particulars, whilst believed to be accurate are set out as a general outline only for guidance and do not constitute any part of an offer or contract. Intending purchasers should not rely on them as statements of representation of fact, but must satisfy themselves by inspection or otherwise as to their accuracy. No person in this firm's employment has the authority to make or give any representation or warranty in respect of the property.

