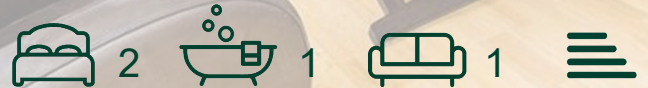




Ashmore Road, London,
Queens Park

£2,350 Per Month



Ashmore Road, London, Queens Park

£2,350 Per Month



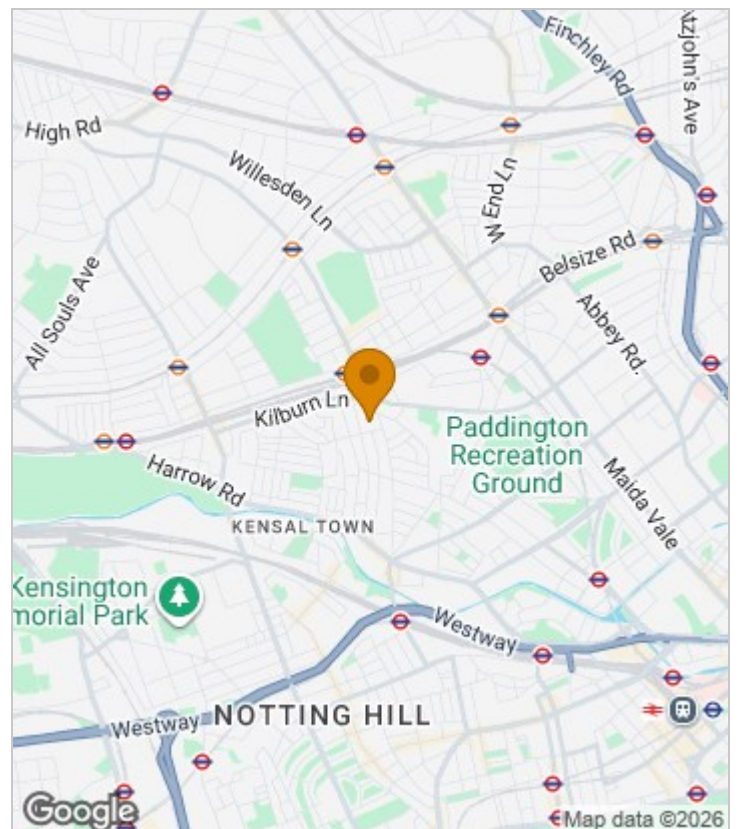
Summary Description

Lovely two double bedroom split level flat with terrace is available from 23th of December. Property is bright and features modern open plan kitchen, big windows, wooden floor in lounge a carpets in bedroom. Other features would be modern bathroom, good size terrace with amazing views! Flat is located in Westminster borough therefore cheap council flat band D. Property is pet friendly. Easy access to Queens Park stations, easy access to well known Salusbury road and to many bars and restaurants available.

To get more information please get in touch with Jorgensen Turner estate agents.

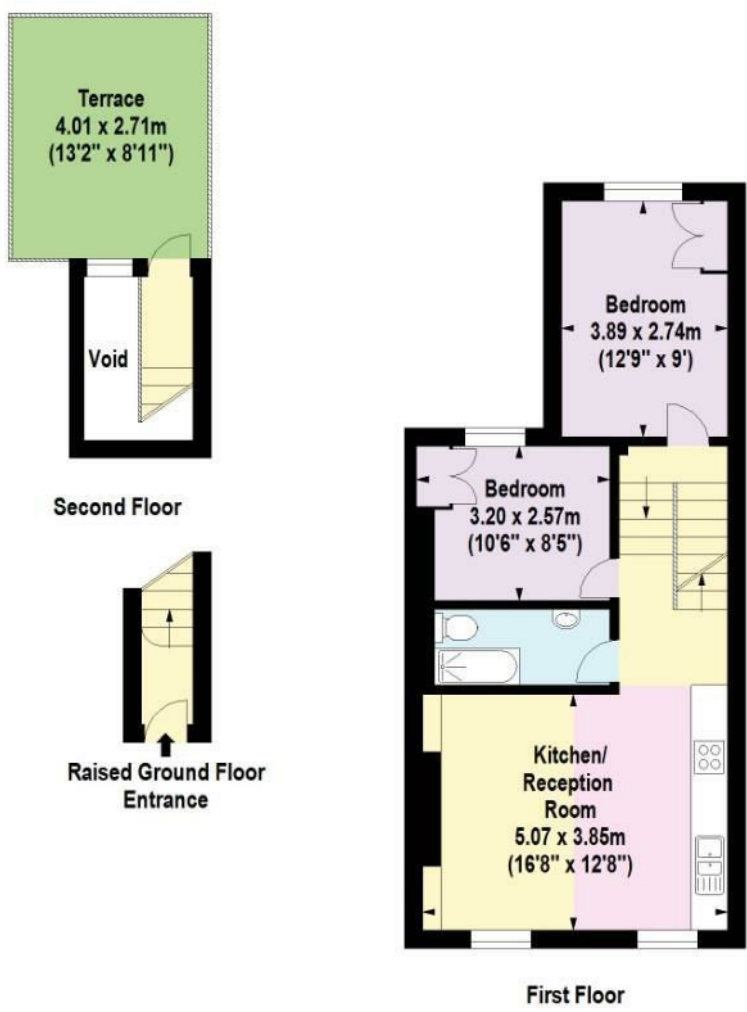
One week's holding deposit required, 5 weeks damage deposit required, new EPC will be done shortly.

Area Map





Floor Plan



For Identification Purposes Only. Not To Scale. © www.totalvista.uk 2019



Ashmore Road, W9

Approx. Gross Internal Area
66.00 Sq M - 692 Sq Ft



Energy Efficiency Graph

Energy Efficiency Rating		Current	Potential
Very energy efficient - lower running costs			
(92 plus) A			
(81-91) B			
(69-80) C			
(55-68) D			
(39-54) E			
(21-38) F			
(1-20) G			
Not energy efficient - higher running costs			
England & Wales	EU Directive 2002/91/EC		

Viewing

Please contact our Lettings QP Office on 0207 604 4040 if you wish to arrange a viewing appointment for this property or require further information.

For further information contact:

Lettings QP, 2a Brondesbury Road, London, NW6 6AS

Tel: 0207 604 4040 Email: info@jorgensenturner.com <https://www.jorgensenturner.com/>



Disclaimer

These particulars, whilst believed to be accurate are set out as a general outline only for guidance and do not constitute any part of an offer or contract. Intending purchasers should not rely on them as statements of representation of fact, but must satisfy themselves by inspection or otherwise as to their accuracy. No person in this firm's employment has the authority to make or give any representation or warranty in respect of the property.