

Salisbury Road, Queens
Park, NW6

£1,595 Per Month



Salisbury Road, Queens Park, NW6

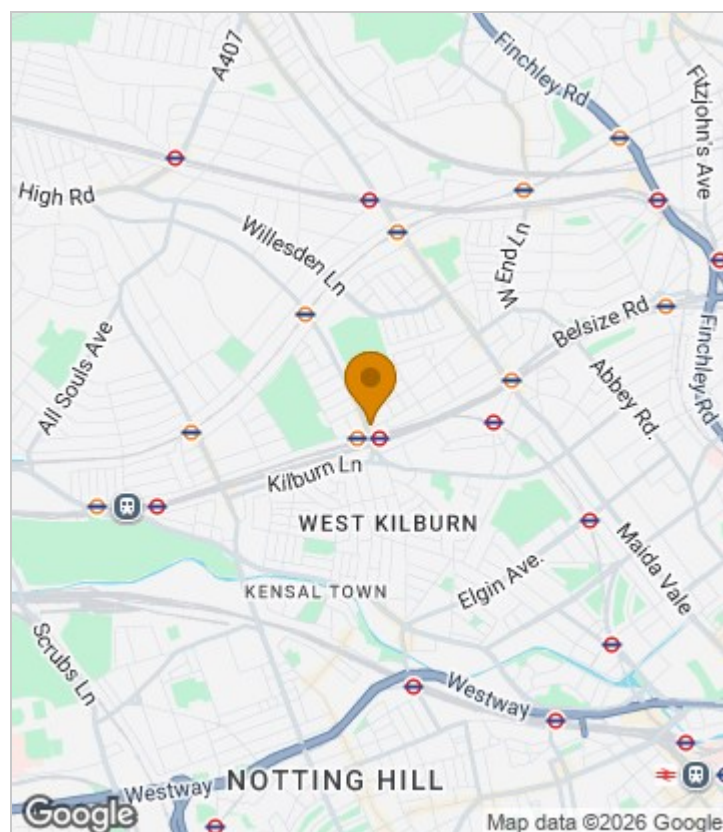
£1,595 Per Month

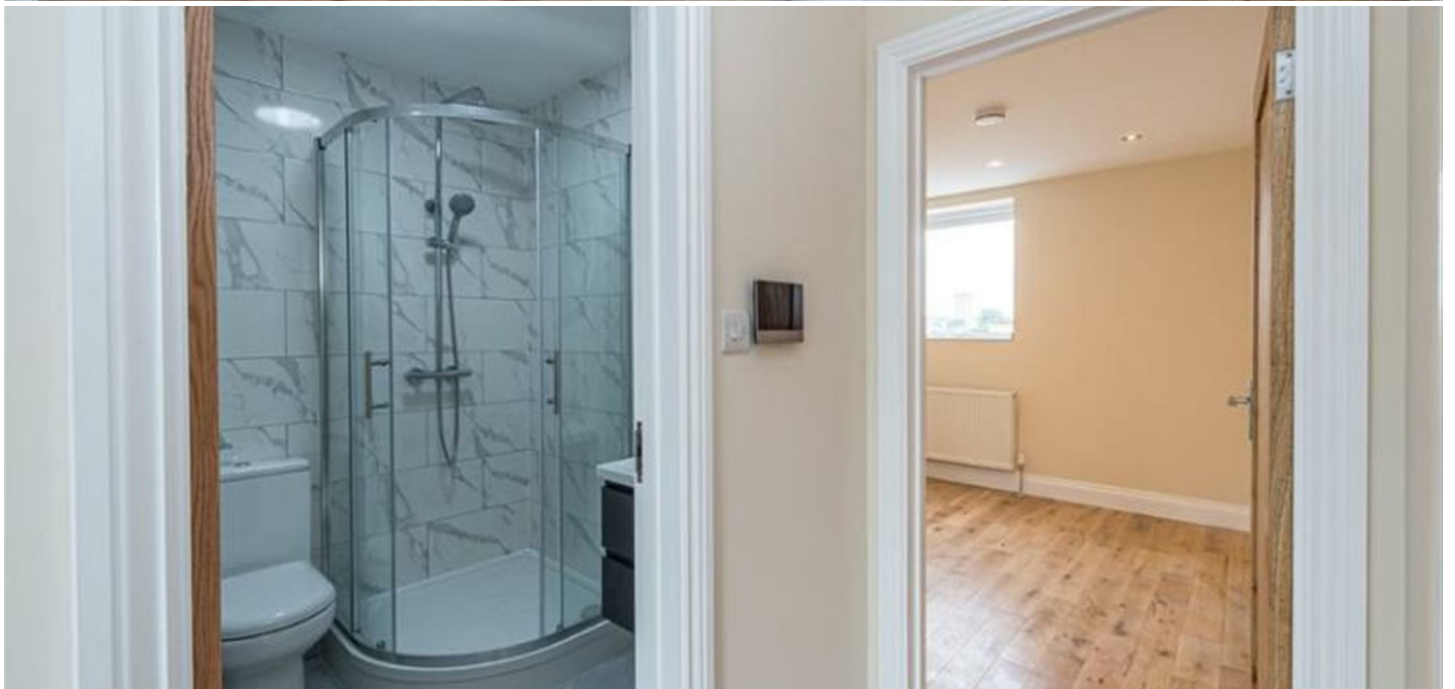


Summary Description

This one bedroom apartment is located in a lovely refurbished development on Salisbury road in the heart of Queens park. The apartment is very bright and modern, comes with fully fitted kitchen, high spec bathroom and nice size double bedroom. The flat is suitable for single occupant or couple. Property is available from May 30th and comes with all bills included - gas, water, council tax, WIFI and electricity. Located close to transport links, bars and restaurants. To arrange a viewing please reach out to Jorgensen Turner Estate agents. One weeks holding deposit will be required, 5 weeks damage deposit required.

Area Map





Floor Plan



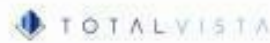
Second Floor

For Identification Purposes Only. Not To Scale. © www.totalvista.uk 2021

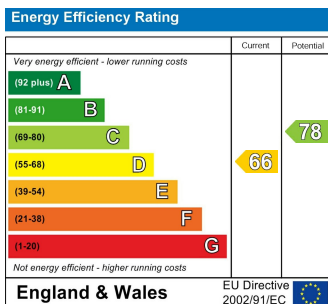


Salisbury Road, NW6

Approx. Gross Internal Area
31.77 Sq M - 342 Sq Ft



Energy Efficiency Graph



Viewing

Please contact our Lettings QP Office on 0207 604 4040 if you wish to arrange a viewing appointment for this property or require further information.

- Located on Salisbury Road
- Next to Queens Park Station
- £200 payable to the landlord for all the bills
- Part furnished
- Available from 30th May
- High Spec Features

For further information contact:

Lettings QP, 2a Brondesbury Road, London, NW6 6AS

Tel: 0207 604 4040 Email: info@jorgensenturner.com <https://www.jorgensenturner.com/>

Disclaimer

These particulars, whilst believed to be accurate are set out as a general outline only for guidance and do not constitute any part of an offer or contract. Intending purchasers should not rely on them as statements of representation of fact, but must satisfy themselves by inspection or otherwise as to their accuracy. No person in this firm's employment has the authority to make or give any representation or warranty in respect of the property.