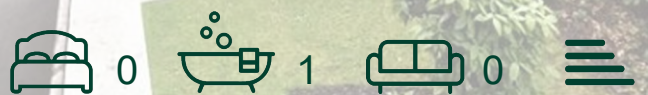


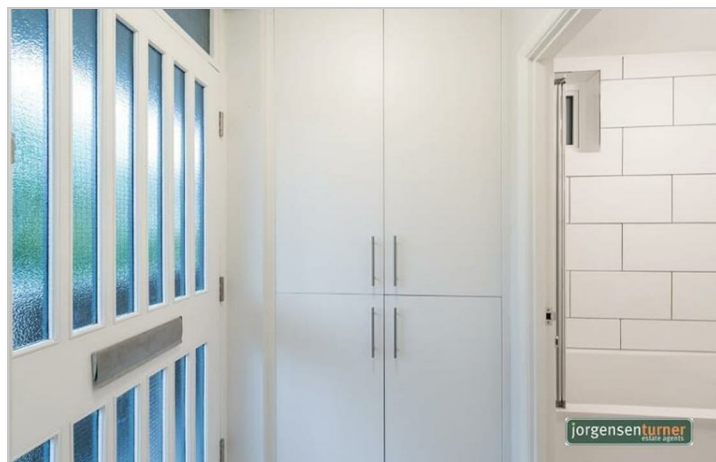
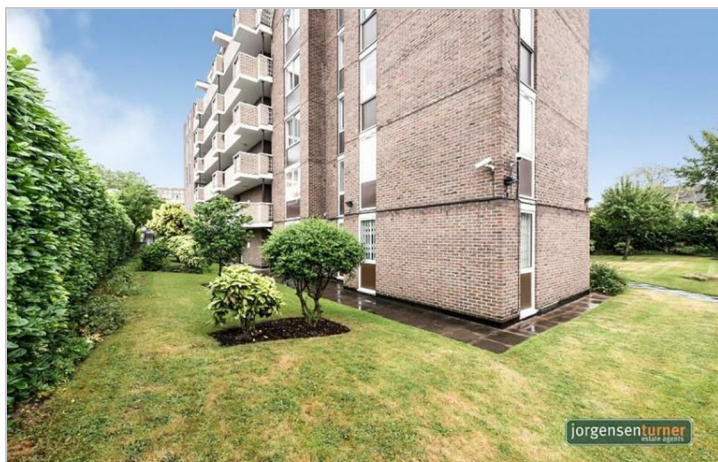


Dinerman Court, Boundary
Road, St Johns Wood,
£1,595 Per Month



Dinerman Court ,Boundary Road, St Johns Wood,

£1,595 Per Month

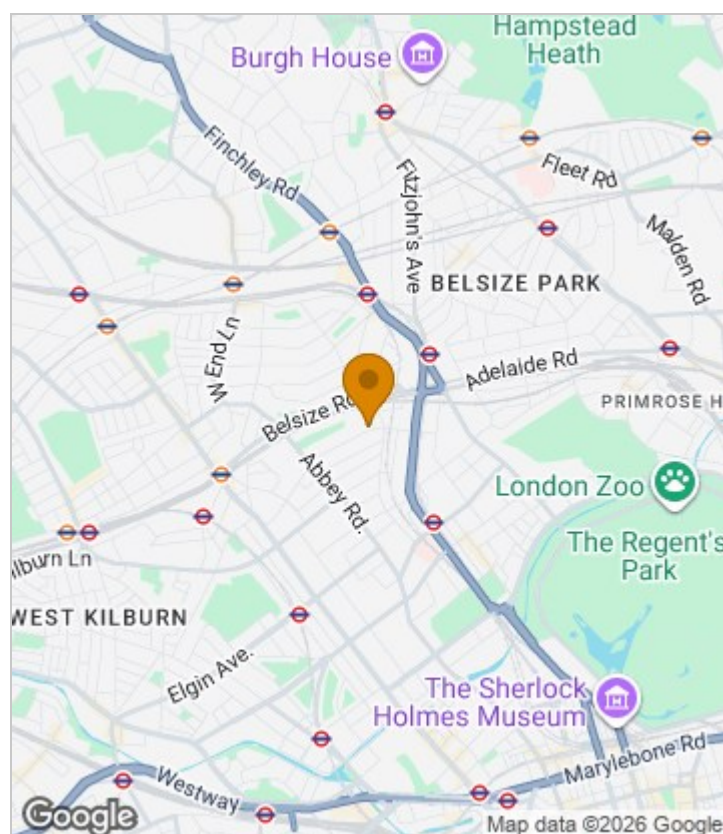


Summary Description

A bright and spacious double studio flat (302 sq ft / 28 sq m) situated in a lovely secure well maintained building just moments away from local amenities. The flat comprises of a spacious double bedroom with built-in wardrobes, separate new modern fitted kitchen and modern three price bathroom with bathtub. The flat further benefits from private parking, communal garden, site care taker and CCTV. Located moments from both St Johns Wood, Swiss Cottage underground station (Jubilee Line - Zone 2) and South Hampstead overground station. Council tax band is B, if you would wish to proceed with the property 1 weeks rent holding would be required, damage deposit will be 5 weeks of rent. Available from 26th of September

To arrange a viewing please contact Jorgensen Turner estate agents Queens Park branch

Area Map





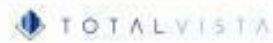
Floor Plan



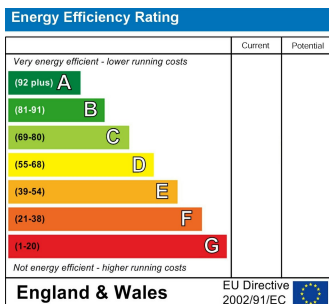
For Identification Purposes Only. Not To Scale. © www.totalvista.uk 2020

**Dinerman Court,
Boundary Road, NW6**

Approx. Gross Internal Area
28.06 Sq M - 302 Sq Ft



Energy Efficiency Graph



Viewing

Please contact our Lettings QP Office on 0207 604 4040 if you wish to arrange a viewing appointment for this property or require further information.

For further information contact:

Lettings QP, 2a Brondesbury Road, London, NW6 6AS

Tel: 0207 604 4040 Email: info@jorgensenturner.com <https://www.jorgensenturner.com/>

Disclaimer

These particulars, whilst believed to be accurate are set out as a general outline only for guidance and do not constitute any part of an offer or contract. Intending purchasers should not rely on them as statements of representation of fact, but must satisfy themselves by inspection or otherwise as to their accuracy. No person in this firm's employment has the authority to make or give any representation or warranty in respect of the property.