



jt | JORGENSENTURNER



Fernhead Road, Queens  
Park, London  
£3,250 Per Month



jt 3 1 1 C jt

# Fernhead Road, Queens Park, London

£3,250 Per Month

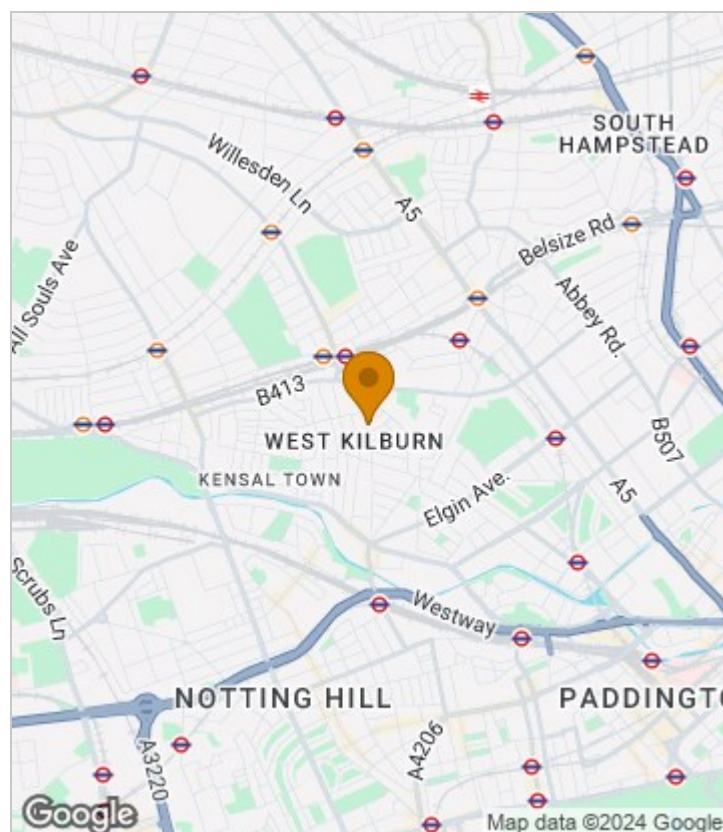


## Summary Description

Outstanding, bright and spacious three bedroom first floor flat (950 sq ft / 88 sq m) located in an ultra-convenient location within very easy reach of the varied facilities and transport links of Queens Park and Maida Vale. The property comprises a lovely large reception room with feature fire place and a bay window, two double bedrooms, one single bedroom, a fully fitted separate modern kitchen with array of appliances and modern bathroom with shower. The property presents really well while offering modern decors and high ceilings and a lot of character. Fernhead Road is located close to Queens Park underground station (Bakerloo Line and overground - Zone 2) and the amenities of Salusbury Road and Shirland Road. To arrange a viewing please contact Jorgensen Turner.

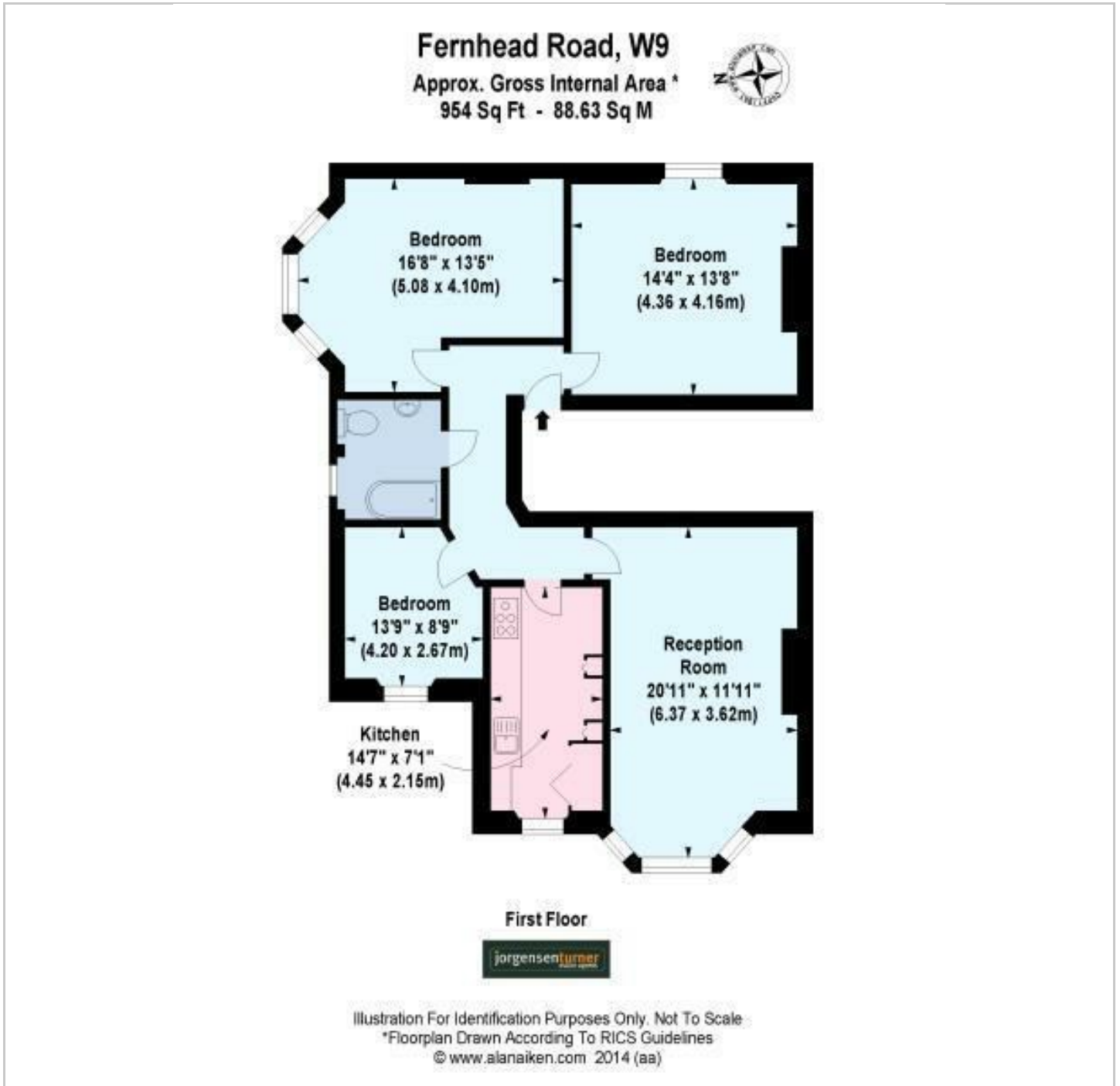
One week's holding deposit will be required, five weeks damage deposit will be required, EPC rating C, council tax band E.

## Area Map

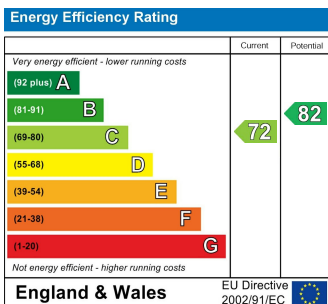




# Floor Plan



## Energy Efficiency Graph



## Viewing

Please contact our Lettings QP Office on 0207 604 4040 if you wish to arrange a viewing appointment for this property or require further information.

For further information contact:

Lettings QP, 2a Brondesbury Road, London, NW6 6AS

Tel: 0207 604 4040 Email: [info@jorgensenturner.com](mailto:info@jorgensenturner.com) <https://www.jorgensenturner.com/>

## Disclaimer

These particulars, whilst believed to be accurate are set out as a general outline only for guidance and do not constitute any part of an offer or contract. Intending purchasers should not rely on them as statements of representation of fact, but must satisfy themselves by inspection or otherwise as to their accuracy. No person in this firm's employment has the authority to make or give any representation or warranty in respect of the property.

