

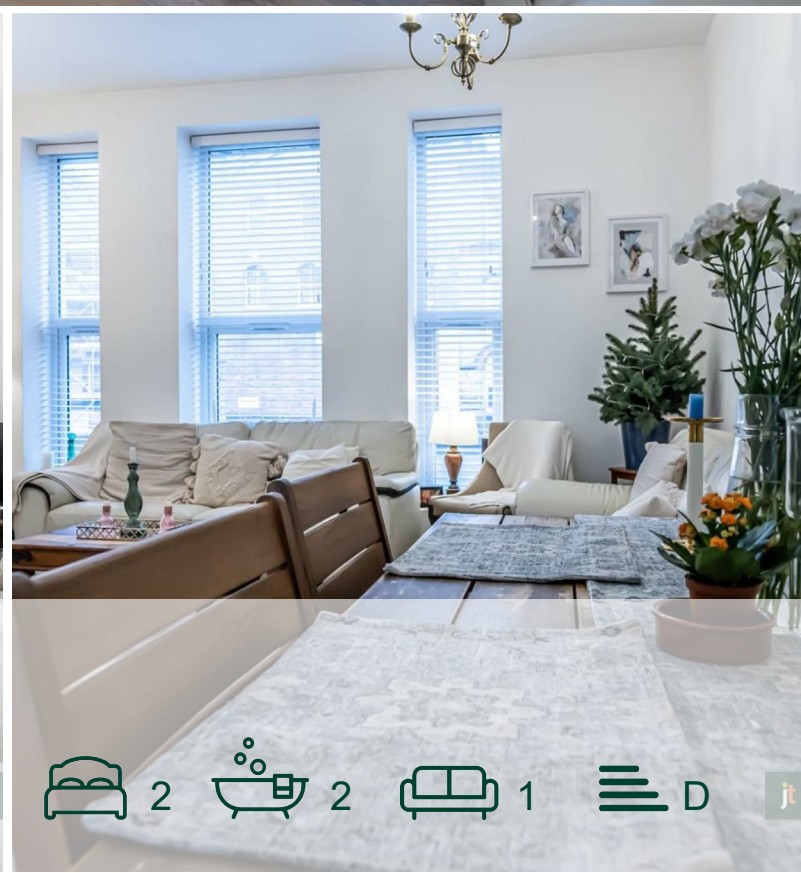


jt | JORGENSENTURNER



Brondesbury Road,
London

£2,495 Per Week



jt



2



2



1

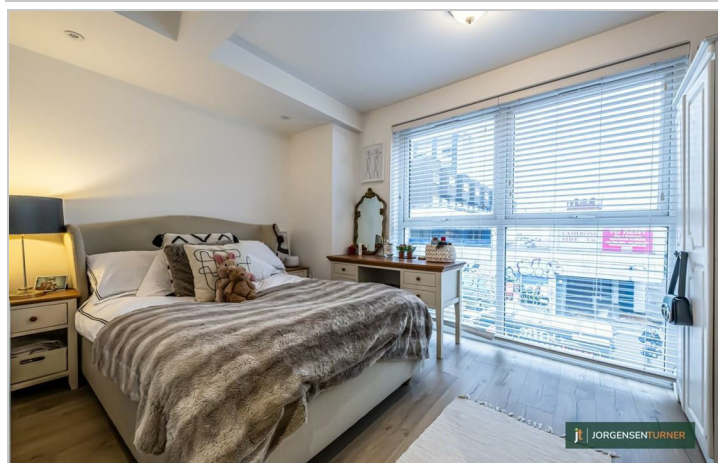
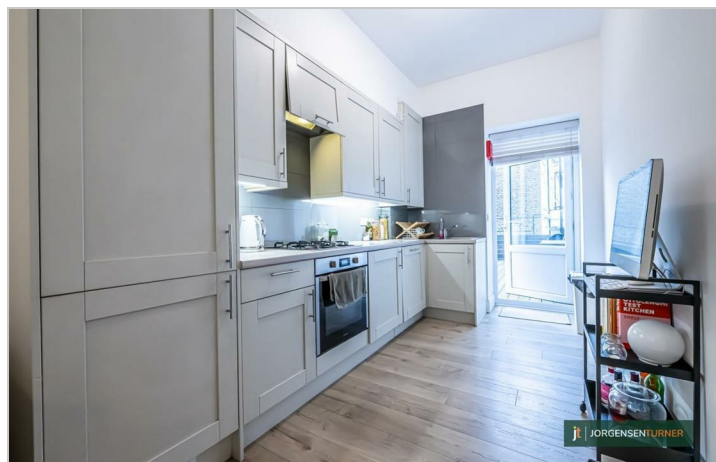


D

jt

Brondesbury Road, London

£2,495 Per Week

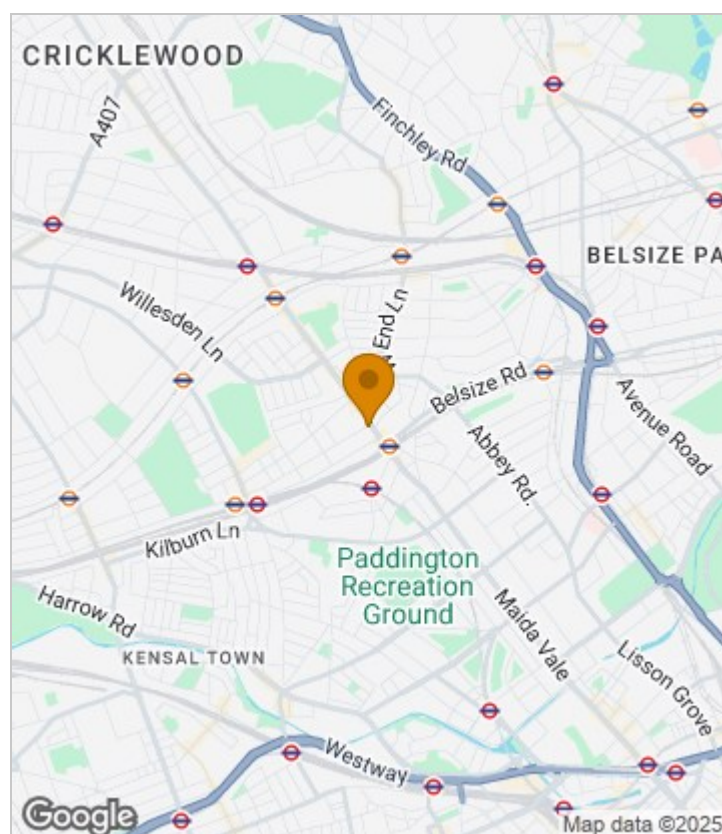


Summary Description

Simply stunning two bedroom two bathroom split level terrace flat is available from 15th of October Modern throughout, offers open plan lounge leading to fully fitted kitchen that then therefore leads to the private roof terrace. Property features two very good size bedrooms, two bathrooms, wooden floor, has double glazed windows throughout and is very bright. The property is located in new build just around the corner from Kilburn High Road and is within walking distance to Kilburn High Road over ground and Kilburn Park Underground stations. Easy access to London city centre, West Hampstead and Queens Park areas. To organize viewing please call or email Jorgensen Turner Estate Agents.

EPC rating D, Council tax band D, one weeks holding deposit required, 5 weeks damage deposit required.

Area Map

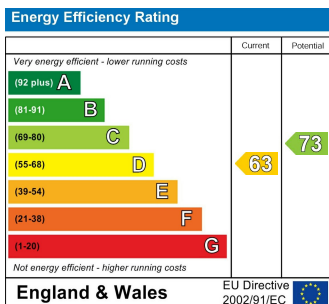




Floor Plan



Energy Efficiency Graph



Viewing

Please contact our Lettings QP Office on 0207 604 4040 if you wish to arrange a viewing appointment for this property or require further information.

- Two Bedroom
- Great storage
- Private terrace
- Two bathroom
- High ceiling
- Easy access to central London

For further information contact:

Lettings QP, 2a Brondesbury Road, London, NW6 6AS

Tel: 0207 604 4040 Email: info@jorgensenturner.com <https://www.jorgensenturner.com/>

Disclaimer

These particulars, whilst believed to be accurate are set out as a general outline only for guidance and do not constitute any part of an offer or contract. Intending purchasers should not rely on them as statements of representation of fact, but must satisfy themselves by inspection or otherwise as to their accuracy. No person in this firm's employment has the authority to make or give any representation or warranty in respect of the property.

