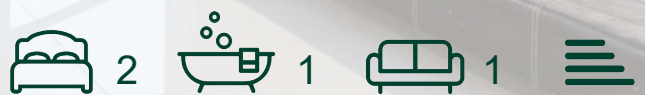




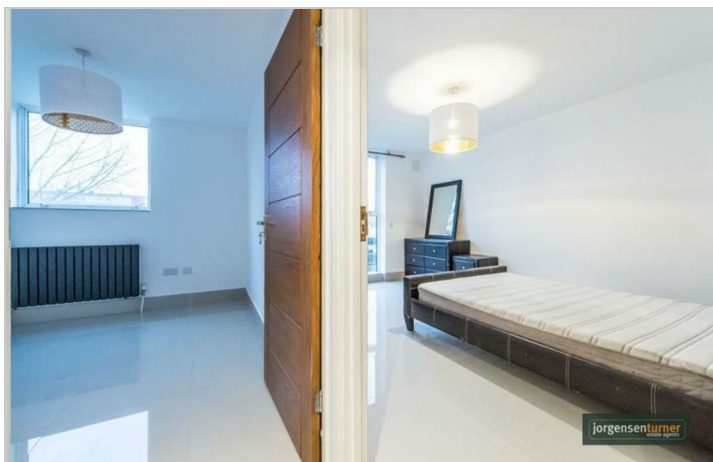
**Brondesbury Villas,
Queens Park, NW6**

£1,925 Per Month



Brondesbury Villas, Queens Park, NW6

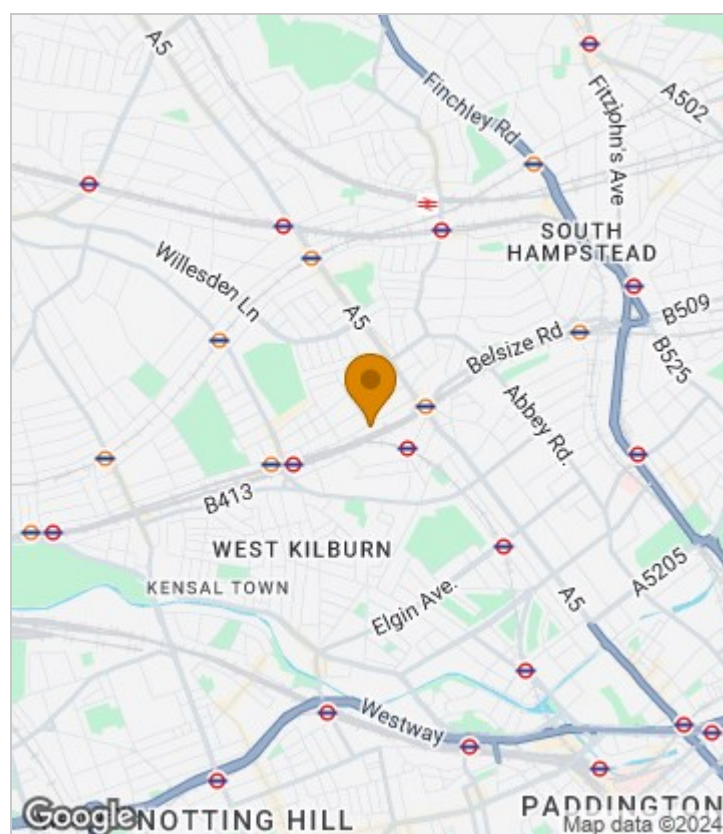
£1,925 Per Month



Summary Description

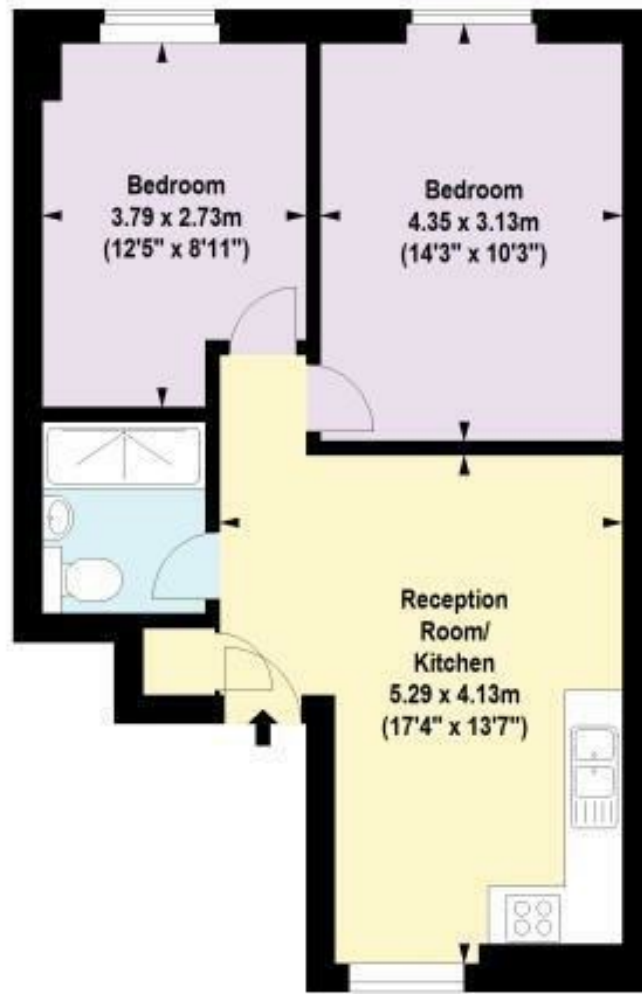
Great condition two bedroom flat in a purpose built secure block offering ample and bright accommodation. The property comprises of a fully fitted open plan kitchen to reception, and two double bedrooms, modern shower room with power shower. The flat further benefits from lift access, communal garden and parking permit availability. Flat is also very bright and comes with extra storage unit. It's set in a very popular street just a stones throw from Queens Park underground station (Bakerloo Line - Zone 2) and Kilburn High Road (London Overground). The amenities of both Salusbury Road and Kilburn High Road are just moments always. Available from 15th November. Property comes unfurnished apart from wardrobes. To arrange a viewing please contact Jorgensen Turner estate agents Queens Park branch for more information.

Area Map





Floor Plan



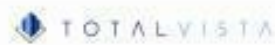
Third Floor

For Identification Purposes Only. Not To Scale. © www.totalvista.uk 2018



Brondesbury Villas, NW6

Approx. Gross Internal Area
48.49 Sq M - 522 Sq Ft



Energy Efficiency Graph



Viewing

Please contact our Lettings QP Office on 0207 604 4040 if you wish to arrange a viewing appointment for this property or require further information.

For further information contact:

Lettings QP, 2a Brondesbury Road, London, NW6 6AS

Tel: 0207 604 4040 Email: info@jorgensenturner.com <https://www.jorgensenturner.com/>

Disclaimer

These particulars, whilst believed to be accurate are set out as a general outline only for guidance and do not constitute any part of an offer or contract. Intending purchasers should not rely on them as statements of representation of fact, but must satisfy themselves by inspection or otherwise as to their accuracy. No person in this firm's employment has the authority to make or give any representation or warranty in respect of the property.

