



jt | JORGENSENTURNER



Remstead House Mortimer
Crescent London

£1,995 Per Month

jt



2



1



1

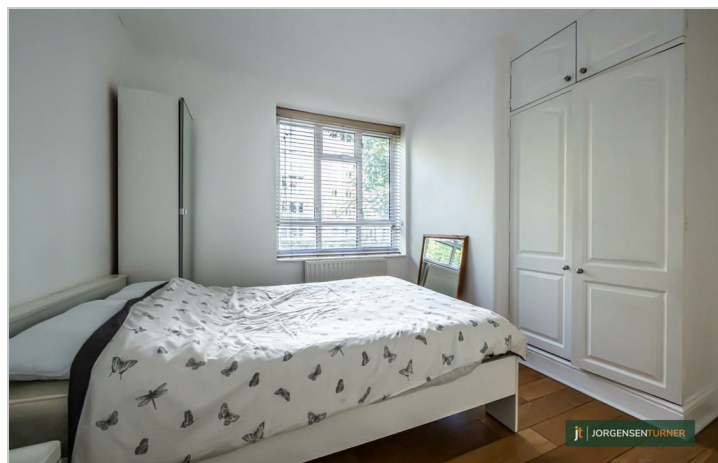


C

jt

Remstead House Mortimer Crescent London

£1,995 Per Month



Summary Description

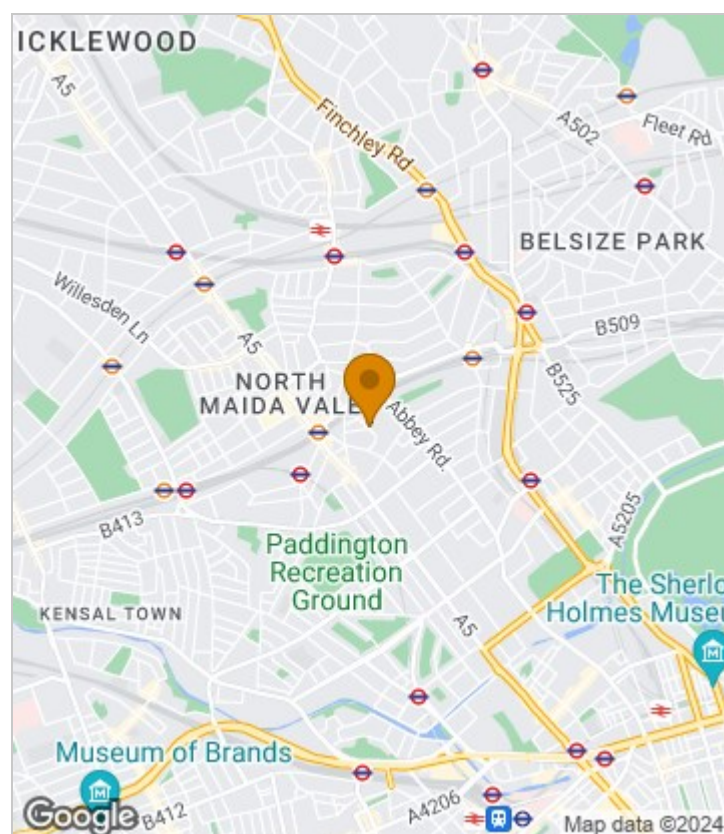
This lovely just redecorated two bedroom property is available from 18th of November. Property features large and modern eat in kitchen, two double bedrooms and large reception room with direct access to private balcony.

Other features are fully double glazed windows, wooden floor throughout, great storage, neutral décor, this flat is really bright and airy.

This property comes furnished but there is a level of flexibility around it. Easy access to Kilburn high road overground station, Kilburn Park overground station, many different bus routes that provides easy access to Central London. Easy access to many shops, bars and restaurants.

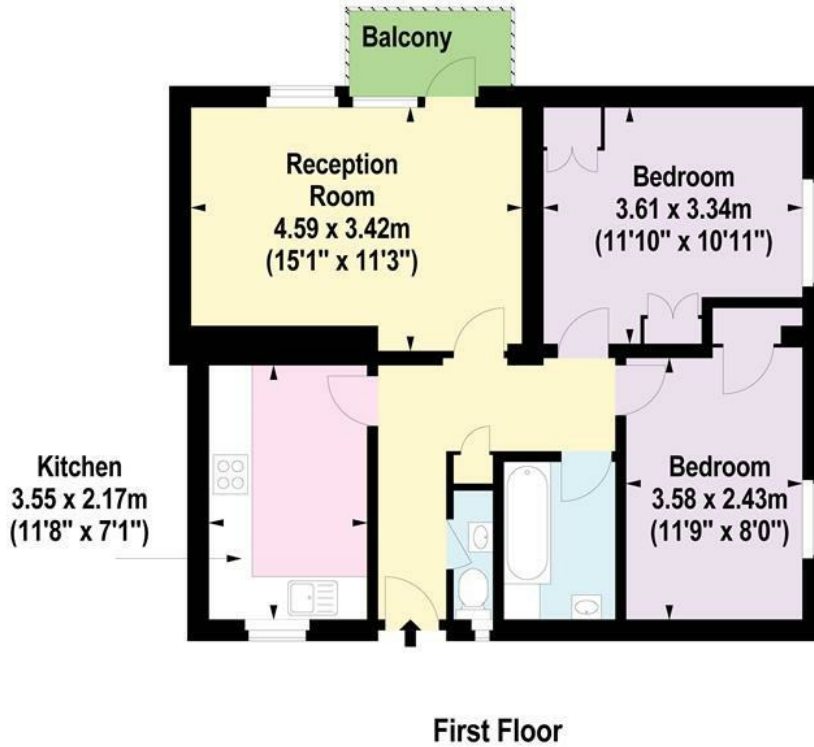
One week's holding deposit required, 5 weeks damage deposit required, EPC rating C, council tax band C. To get more information or to book a viewing please call Jorgensen Turner Estate Agents

Area Map





Floor Plan



For Identification Purposes Only. Not To Scale. © www.totalvista.uk 2023

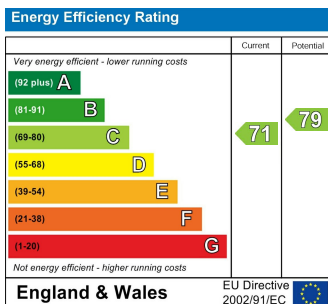


Remsted House, NW6

Approx. Gross Internal Area
59.73 Sq M - 643 Sq Ft



Energy Efficiency Graph



Viewing

Please contact our Lettings QP Office on 0207 604 4040 if you wish to arrange a viewing appointment for this property or require further information.

- Two double bedroom flat
- Great storage
- Large living room
- Redecorated
- Modern kitchen
- Wooden floor
- Private balcony

For further information contact:

Lettings QP, 2a Brondesbury Road, London, NW6 6AS

Tel: 0207 604 4040 Email: info@jorgensenturner.com <https://www.jorgensenturner.com/>

Disclaimer

These particulars, whilst believed to be accurate are set out as a general outline only for guidance and do not constitute any part of an offer or contract. Intending purchasers should not rely on them as statements of representation of fact, but must satisfy themselves by inspection or otherwise as to their accuracy. No person in this firm's employment has the authority to make or give any representation or warranty in respect of the property.

