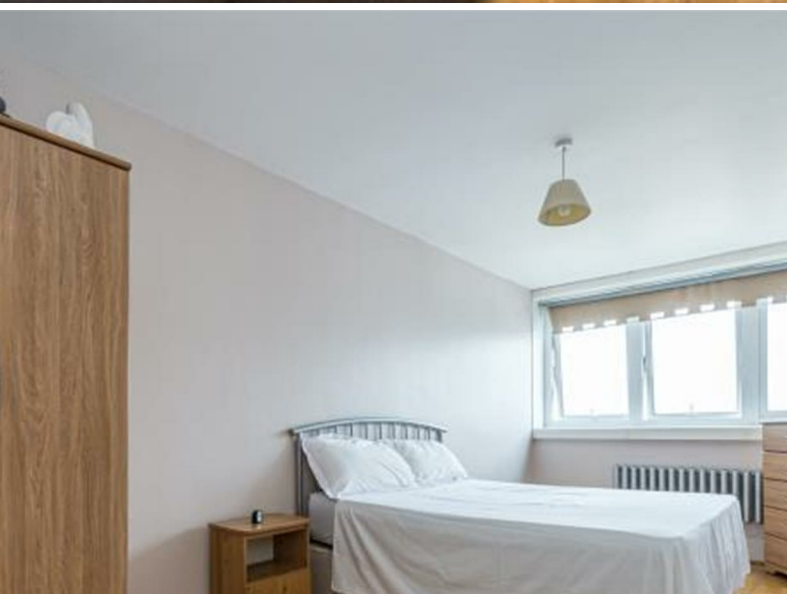




jt | JORGENSENTURNER



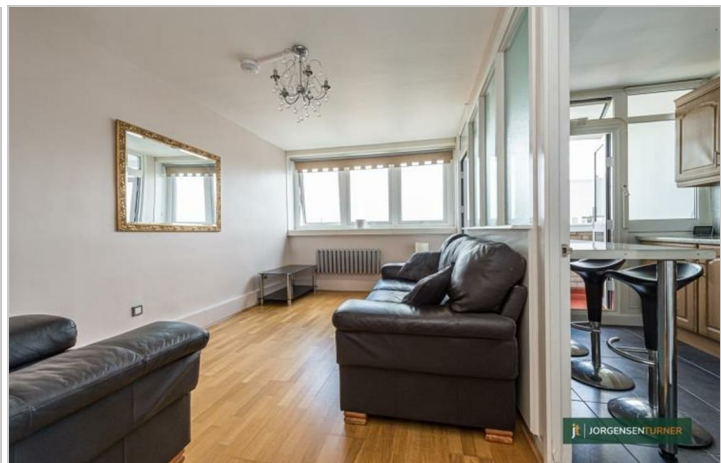
*HEATING AND HOT
WATER
INCLUDED*
£1,750 Per Month



jt |  1  1  1 

*HEATING AND HOT WATER

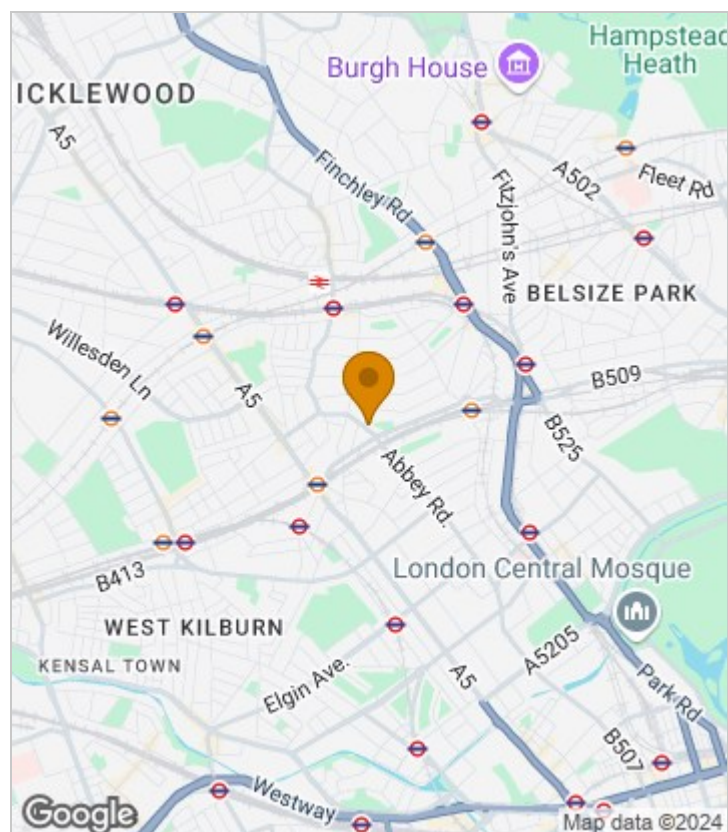
INCLUDED*



Summary Description

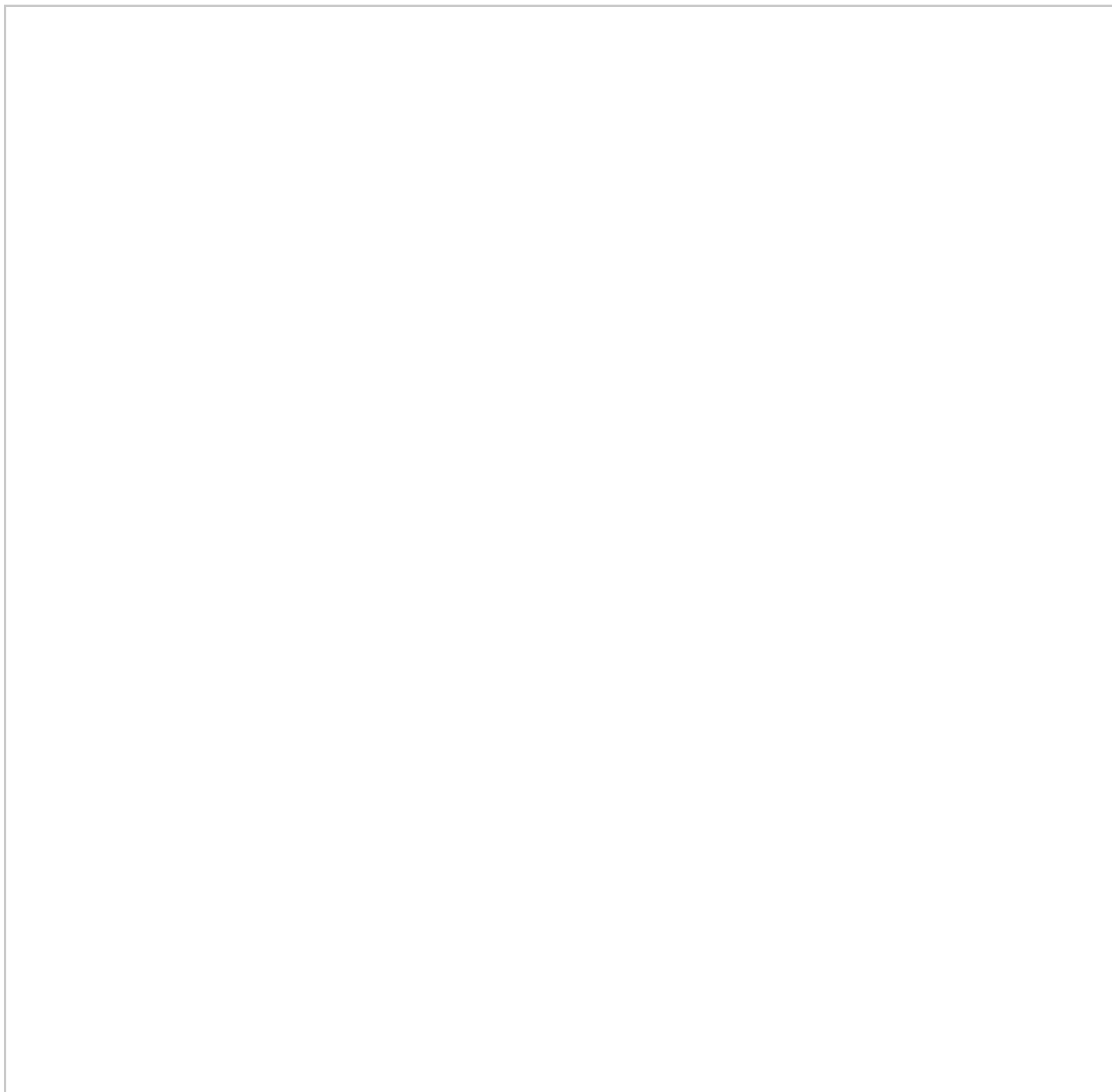
Lovely one bedroom property is available immediately. Located on the 19th floor offers breath-taking views and lovely balcony. Great 540 sq/meter living space features separate kitchen, bright living room, really good size bedroom and tons of storage. Property has wooden floor throughout, comes partly furnished. Other benefits are lift in the block, great connections to central London since flat is within walking distance from South Hamsptead, Swiss Cottage and West Hampstead stations. Conveniently located close to shops, bars and restaurant. Property has heating and hot water included in rental price. To get more information please call Jorgensen Turner Estate Agents. Council tax band B, one week`s holding deposit required, 5 week`s damaged deposit required.

Area Map

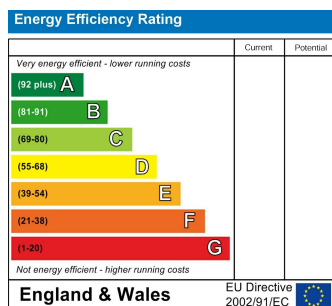




Floor Plan



Energy Efficiency Graph



Viewing

Please contact our Lettings QP Office on 0207 604 4040 if you wish to arrange a viewing appointment for this property or require further information.

- Large one bedroom flat
- Great storage
- Lift
- 19th floor views
- Separate kitchen
- Very bright flat

For further information contact:

Lettings QP, 2a Brondesbury Road, London, NW6 6AS

Tel: 0207 604 4040 Email: info@jorgensenturner.com <https://www.jorgensenturner.com/>

Disclaimer

These particulars, whilst believed to be accurate are set out as a general outline only for guidance and do not constitute any part of an offer or contract. Intending purchasers should not rely on them as statements of representation of fact, but must satisfy themselves by inspection or otherwise as to their accuracy. No person in this firm's employment has the authority to make or give any representation or warranty in respect of the property.

