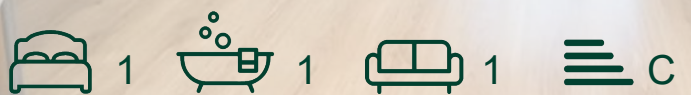




Brondesbury Road,
Queens Park

£1,575 Per Month



Brondesbury Road, Queens Park

£1,575 Per Month



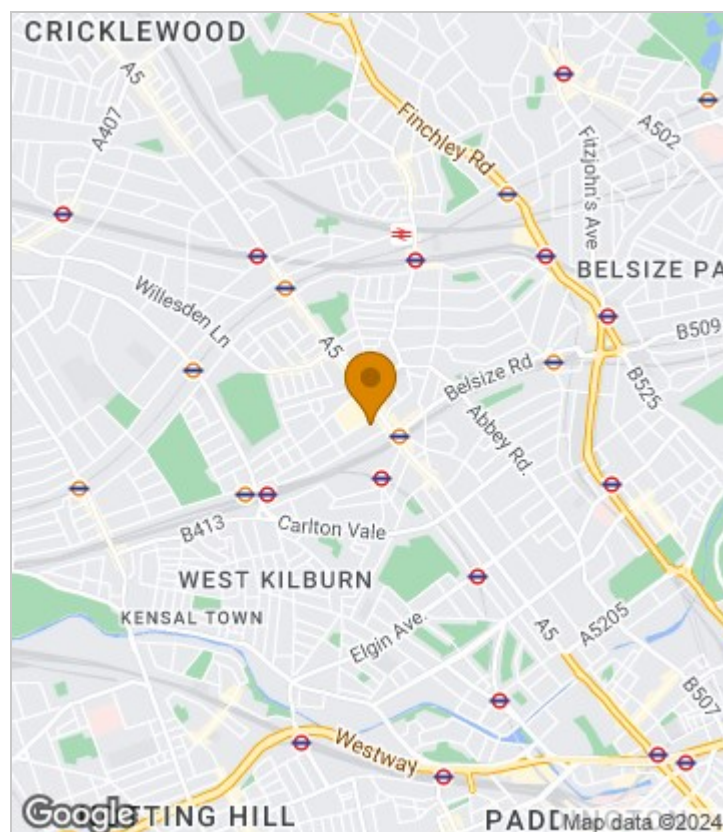
Summary Description

A lovely one double bedroom flat to rent in one of Queens Park most popular roads. Property comprises one double bedroom, a spacious lounge, semi open plan kitchen and clean bathroom. The property is neutrally decorated throughout and offered part furnished. Ideally located close to Kilburn Park and Queens Park stations along with Salusbury Road shops and local amenities.

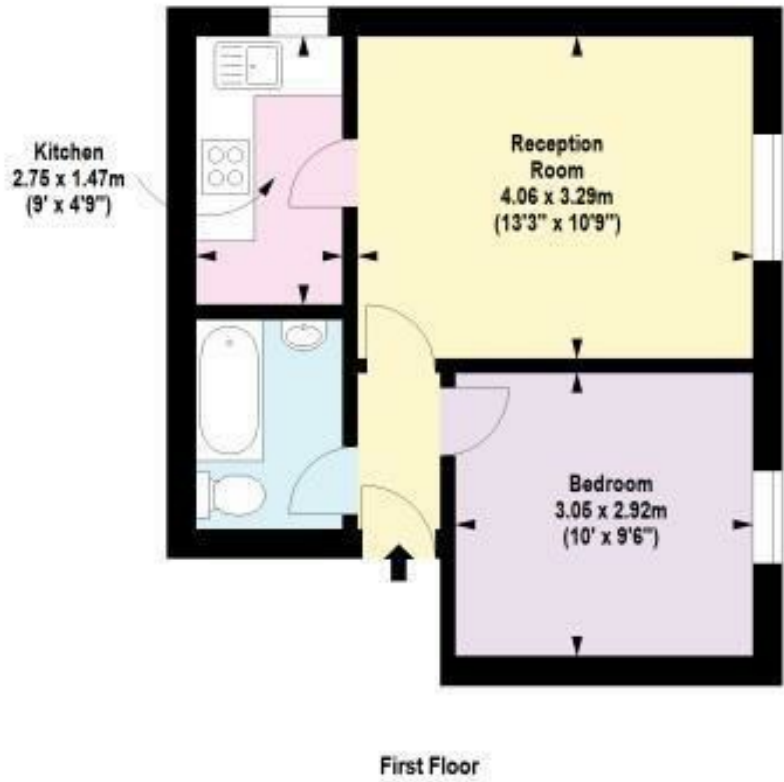
Really easy access to Queens Park stations, Kilburn Park station, Kilburn station, Kilburn high Road station. One week's holding deposit required, 5 weeks damage deposit required, EPC rating C, Council tax band C.

Call Jorgensen Turner Estate agents to arrange a viewing.

Area Map



Floor Plan

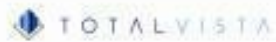


For Identification Purposes Only. Not To Scale. © www.totalvista.uk 2020

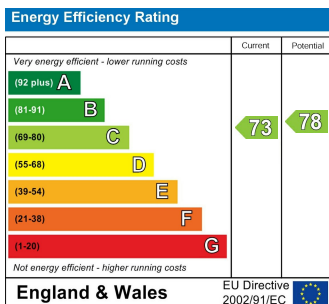


Brondesbury Road, NW6

Approx. Gross Internal Area
32.79 Sq M - 353 Sq Ft



Energy Efficiency Graph



Viewing

Please contact our Lettings QP Office on 0207 604 4040 if you wish to arrange a viewing appointment for this property or require further information.

For further information contact:

Lettings QP, 2a Brondesbury Road, London, NW6 6AS

Tel: 0207 604 4040 Email: info@jorgensenturner.com <https://www.jorgensenturner.com/>



Disclaimer

These particulars, whilst believed to be accurate are set out as a general outline only for guidance and do not constitute any part of an offer or contract. Intending purchasers should not rely on them as statements of representation of fact, but must satisfy themselves by inspection or otherwise as to their accuracy. No person in this firm's employment has the authority to make or give any representation or warranty in respect of the property.