

Kilburn High Road, London

£1,695 Per Month



Kilburn High Road, London

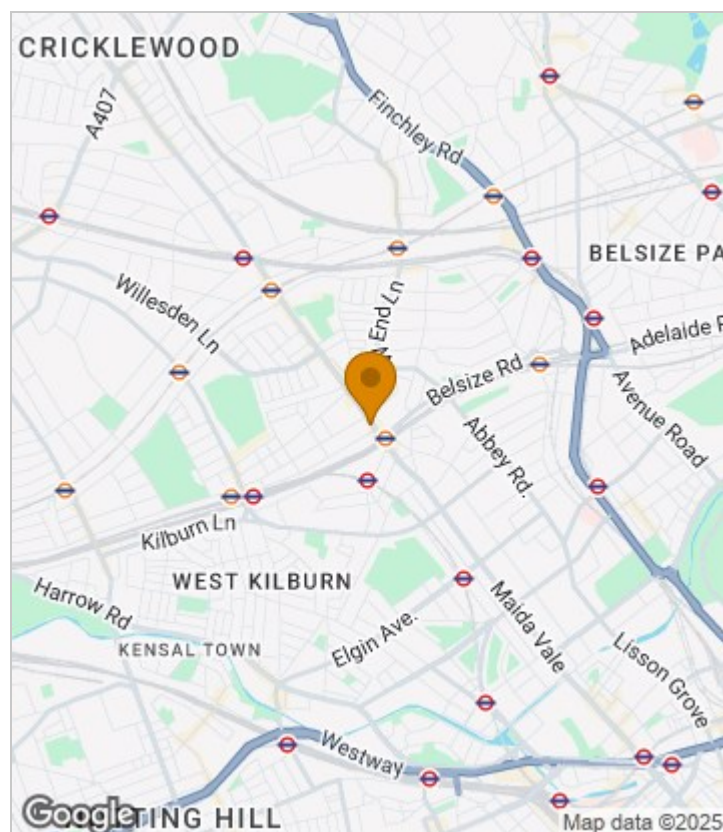
£1,695 Per Month



Summary Description

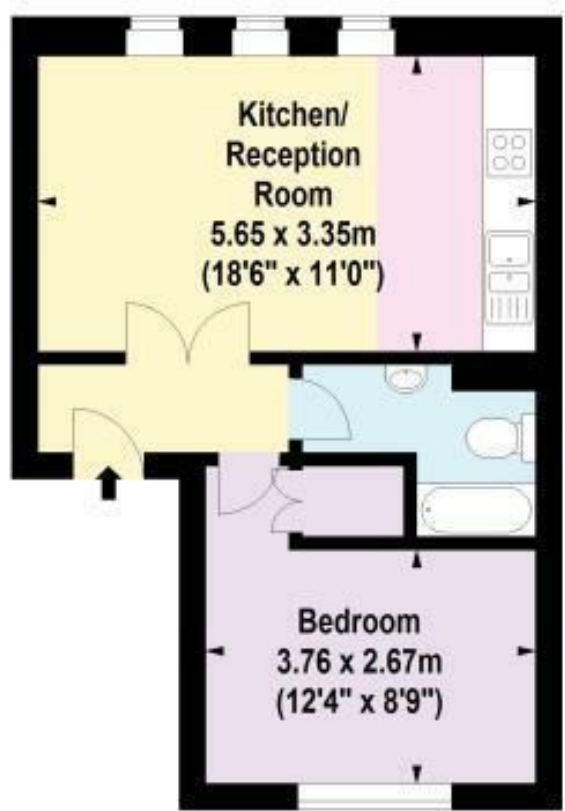
This beautiful one bedroom first floor conversion flat is available from 4th of October. Flat features open plan living space, contemporary kitchen including washing machine and dishwasher, modern bathroom, wood flooring in the reception area. Property come with double glazed windows that allows a lot of light to come in, laminate floor throughout, good storage and is offered fully furnished. Additionally the flat benefits from being within very close proximity of Kilburn Park and Kilburn underground stations, the overground at Kilburn High Road and the various local bus links, easy access to shops and restaurants. EPC rating D, Council tax band B, one week`s holding deposit required, 5 weeks damage deposit required.

Area Map





Floor Plan



First Floor

For Identification Purposes Only. Not To Scale. © www.totalvista.uk 2021



Kilburn High Road, NW6

Approx. Gross Internal Area
39.48 Sq M - 425 Sq Ft



Energy Efficiency Graph

| Energy Efficiency Rating | | Current | Potential |
|---|-------------------------|---------|-----------|
| Very energy efficient - lower running costs | | | |
| (92 plus) A | | | |
| (81-91) B | | | |
| (69-80) C | | | |
| (55-68) D | | | |
| (39-54) E | | | |
| (21-38) F | | | |
| (1-20) G | | | |
| Not energy efficient - higher running costs | | | |
| England & Wales | EU Directive 2002/91/EC | | |

Viewing

Please contact our Lettings QP Office on 0207 604 4040 if you wish to arrange a viewing appointment for this property or require further information.

For further information contact:

Lettings QP, 2a Brondesbury Road, London, NW6 6AS

Tel: 0207 604 4040 Email: info@jorgensenturner.com <https://www.jorgensenturner.com/>



Disclaimer

These particulars, whilst believed to be accurate are set out as a general outline only for guidance and do not constitute any part of an offer or contract. Intending purchasers should not rely on them as statements of representation of fact, but must satisfy themselves by inspection or otherwise as to their accuracy. No person in this firm's employment has the authority to make or give any representation or warranty in respect of the property.