

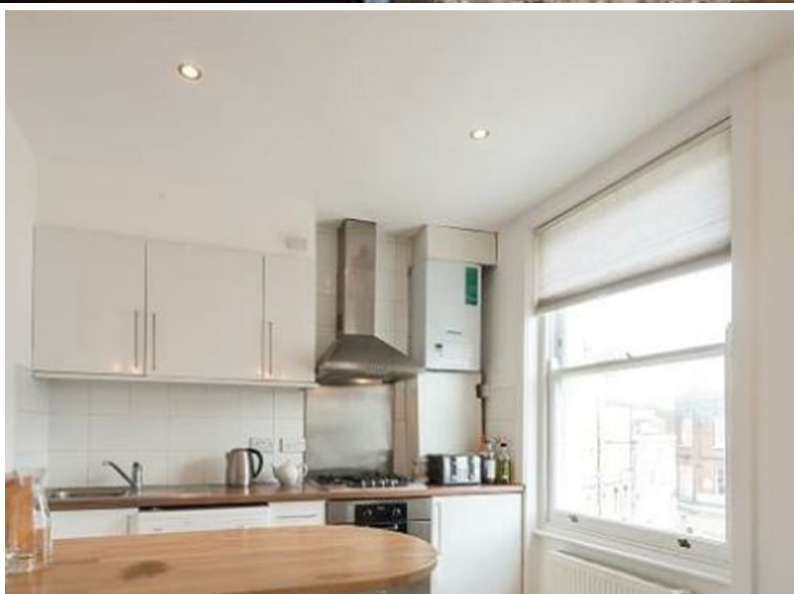


jorgensenturner
estate agents



Kilburn High Road, NW6

£1,750 Per Month



1



1



1



C

Kilburn High Road, NW6

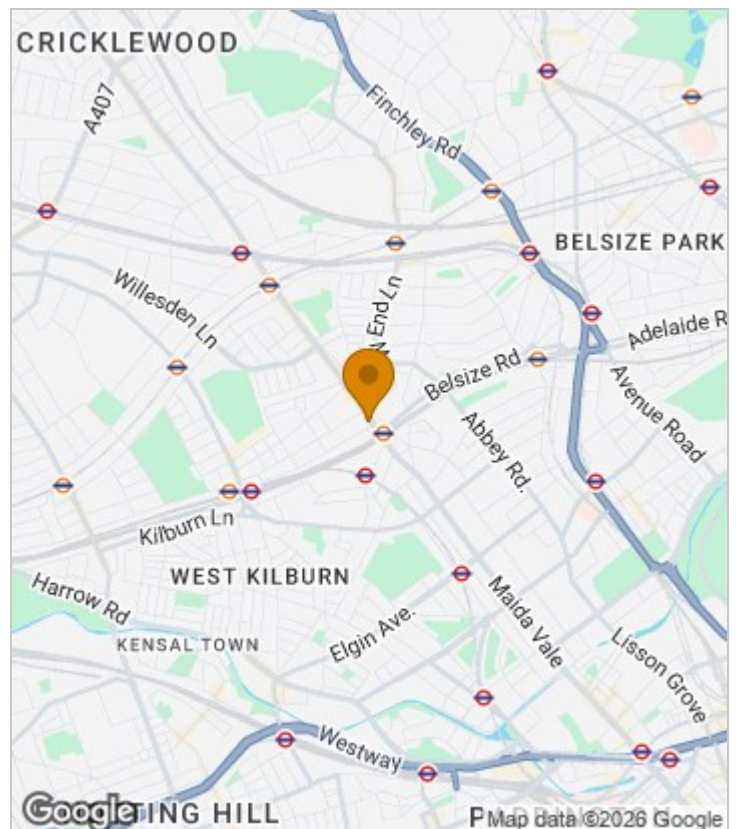
£1,750 Per Month



Summary Description

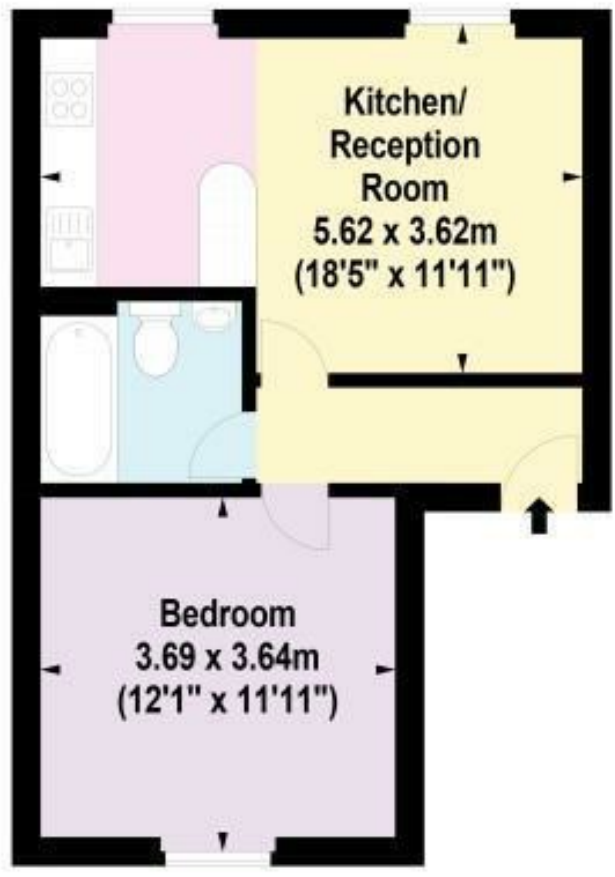
A beautiful one bedroom second floor flat available from 20th of October. The property features a great open plan living space, modern white kitchen and bathroom, plenty of wardrobe space and wood flooring in the reception area. Property has high ceilings with an abundance of natural light. Additionally the flat benefits from being within very close proximity of Kilburn Park and Kilburn underground stations, the Overground at Kilburn High Road and the various local bus links. Call Jorgensen Turner to get more information and to book a viewing. EPC rating C, Council tax band B, one week's holding deposit will be required, 5 weeks damage deposit will be required.

Area Map





Floor Plan



Second Floor

For Identification Purposes Only. Not To Scale. © www.totalvista.uk 2020

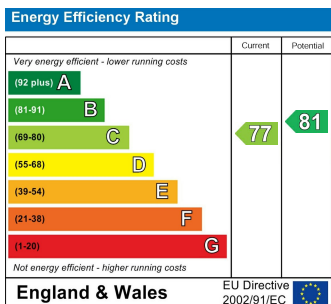


Kilburn High Road, NW6

Approx. Gross Internal Area
40.50 Sq M - 436 Sq Ft



Energy Efficiency Graph



Viewing

Please contact our Lettings QP Office on 0207 604 4040 if you wish to arrange a viewing appointment for this property or require further information.

For further information contact:

Lettings QP, 2a Brondesbury Road, London, NW6 6AS

Tel: 0207 604 4040 Email: info@jorgensenturner.com <https://www.jorgensenturner.com/>

Disclaimer

These particulars, whilst believed to be accurate are set out as a general outline only for guidance and do not constitute any part of an offer or contract. Intending purchasers should not rely on them as statements of representation of fact, but must satisfy themselves by inspection or otherwise as to their accuracy. No person in this firm's employment has the authority to make or give any representation or warranty in respect of the property.