



jt | JORGENSENTURNER



Brondesbury Villas,
Queens Park, London

£1,650 Per Month



jt |  1  1  1  D jt

Brondesbury Villas, Queens Park, London

£1,650 Per Month

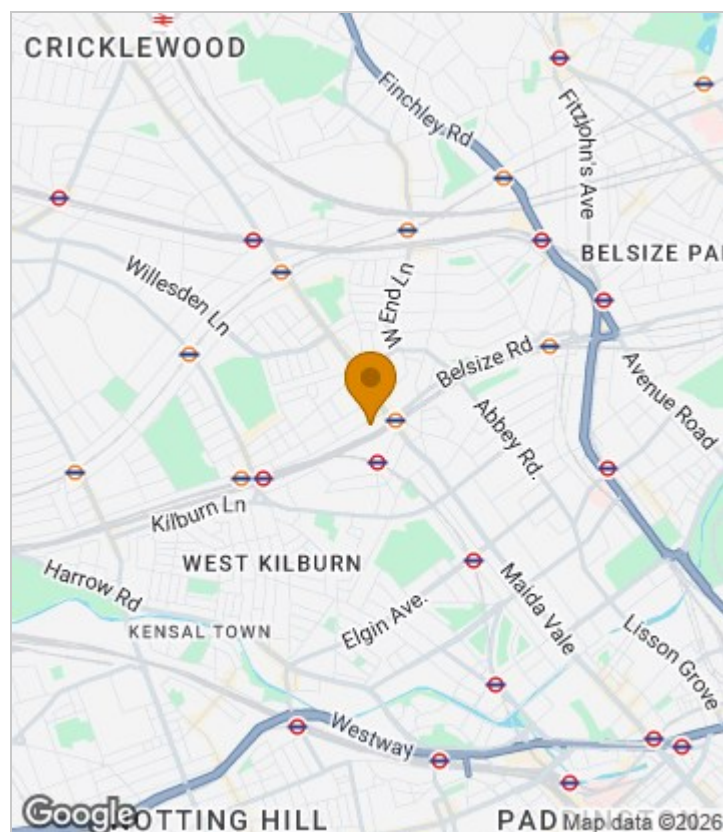


Summary Description

A superb spacious one bedroom top floor flat in a lovely well maintained Victorian conversion on a popular residential tree lined street available from 18th of November The flat comprises one double bedroom, large reception room and fully equipped integrated kitchen. Property has wooden floor throughout and is really bright. Suitable for single or couple. Brondesbury Villas is a sought after residential street with Queens Park, Kilburn High Road and Kilburn Park stations moments away. To arrange a viewing please contact Jorgensen Turner estate agents.

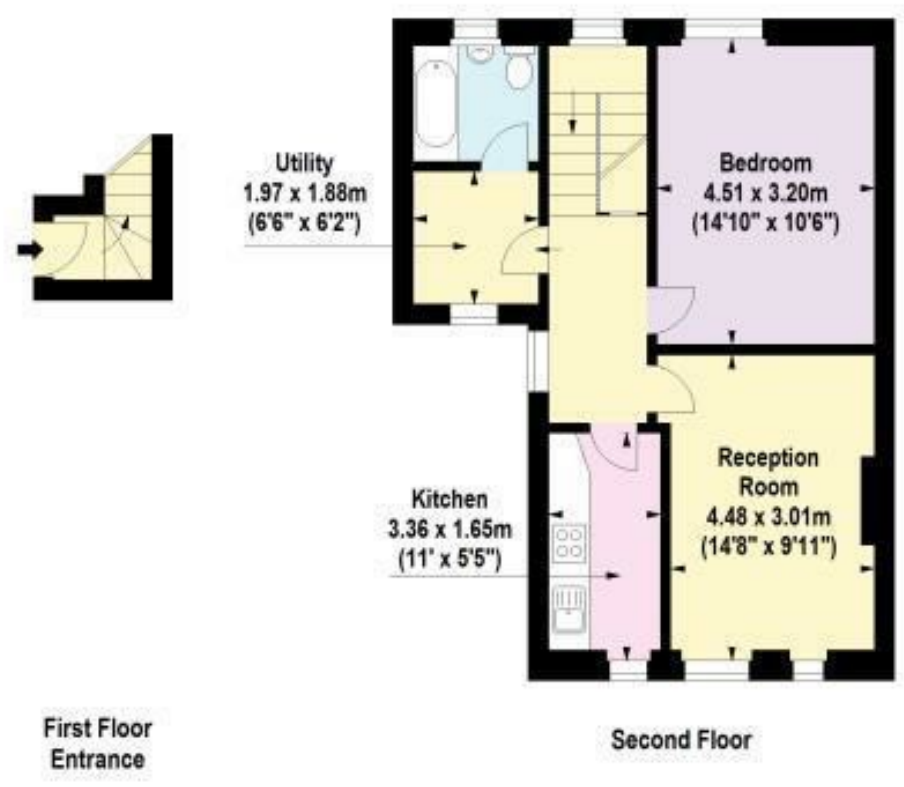
One week's holding deposit required, 5 weeks damage deposit required, Council tax band C

Area Map





Floor Plan



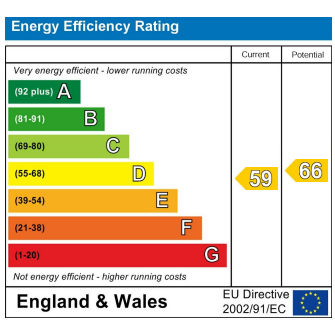
For Identification Purposes Only. Not To Scale. © www.totalvista.uk 2019

Brondesbury Villas, NW6

Approx. Gross Internal Area
52.77 Sq M - 568 Sq Ft



Energy Efficiency Graph



Viewing

Please contact our Lettings QP Office on 0207 604 4040 if you wish to arrange a viewing appointment for this property or require further information.

For further information contact:

Lettings QP, 2a Brondesbury Road, London, NW6 6AS

Tel: 0207 604 4040 Email: info@jorgensenturner.com <https://www.jorgensenturner.com/>



Disclaimer

These particulars, whilst believed to be accurate are set out as a general outline only for guidance and do not constitute any part of an offer or contract. Intending purchasers should not rely on them as statements of representation of fact, but must satisfy themselves by inspection or otherwise as to their accuracy. No person in this firm's employment has the authority to make or give any representation or warranty in respect of the property.