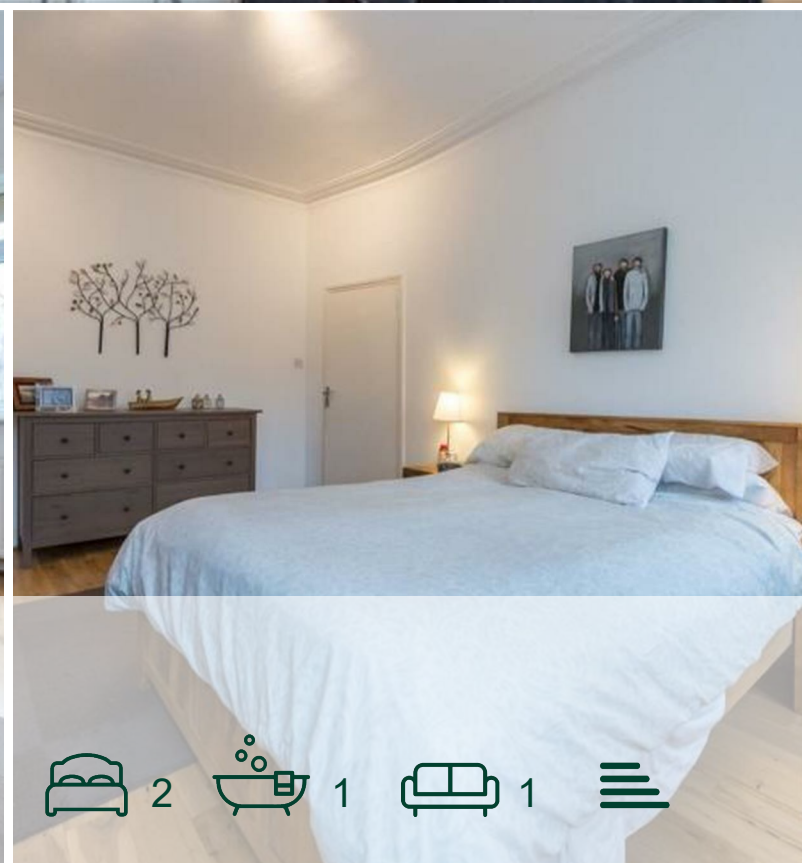




jorgensenturner
estate agents



Brondesbury Villas,
Queens Park, NW6

£2,500 Per Month



Brondesbury Villas, Queens Park, NW6

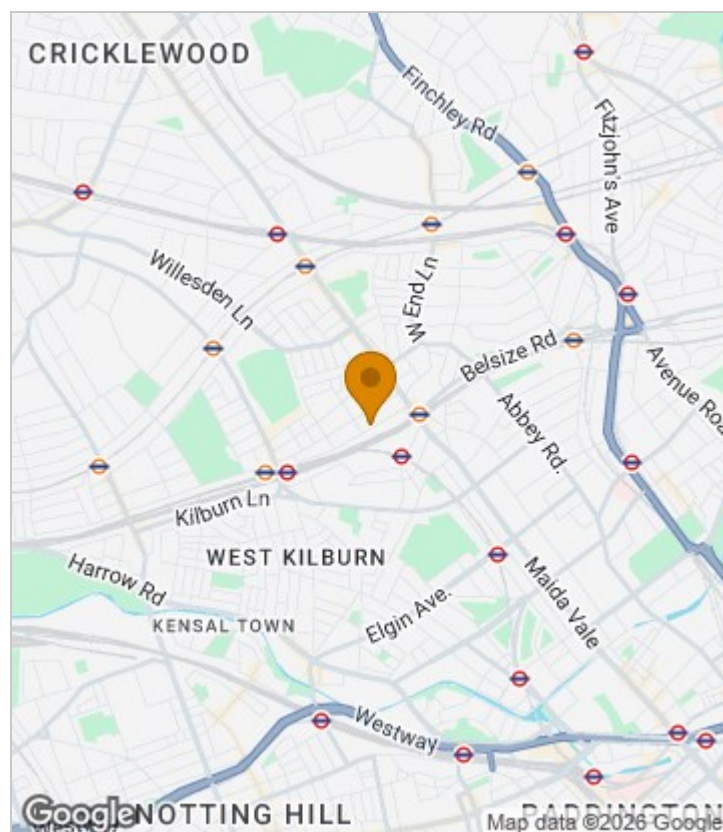
£2,500 Per Month



Summary Description

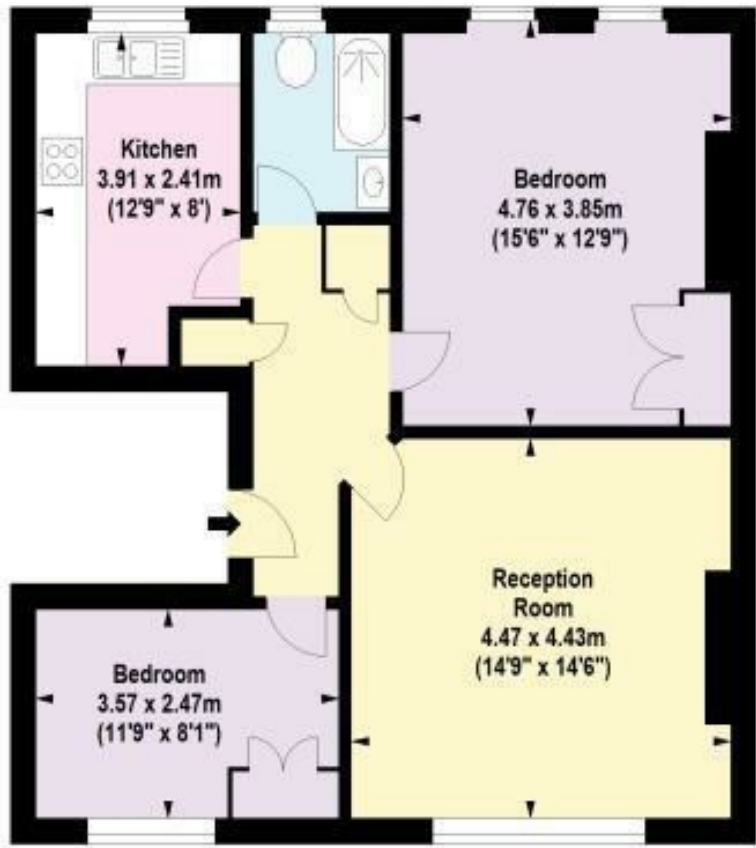
A superb spacious and well balanced two bedroom flat in a period conversion boasting approximately 700 sq ft. The flat comprises two double bedrooms both fitted wardrobes, modern bathroom, large reception room and a fully equipped integrated kitchen. Property is very bright has tons of storage has double glazed windows throughout and is located in well looked after building Brondesbury Villas is a residential street with Queens Park, Kilburn High Road and Kilburn Park stations moments away, close to bars and restaurants. Available from 12th of June Call Jorgensen Turner Estate Agents to arrange a viewing. One week's holding deposit will be required, 5 weeks damage deposit will be required, EPC rating C, council tax band D

Area Map





Floor Plan



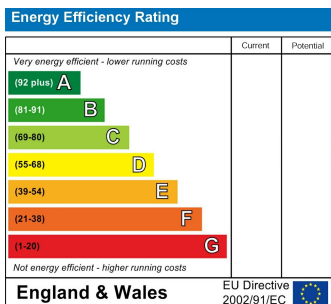
First Floor



For Identification Purposes Only. Not To Scale. © www.totalvista.uk 2018

Brondesbury Villas, NW6 Approx. Gross Internal Area 68.00 Sq M - 732 Sq Ft TOTALVISTA

Energy Efficiency Graph



Viewing

Please contact our Lettings QP Office on 0207 604 4040 if you wish to arrange a viewing appointment for this property or require further information.

For further information contact:

Lettings QP, 2a Brondesbury Road, London, NW6 6AS

Tel: 0207 604 4040 Email: info@jorgensenturner.com <https://www.jorgensenturner.com/>

Disclaimer

These particulars, whilst believed to be accurate are set out as a general outline only for guidance and do not constitute any part of an offer or contract. Intending purchasers should not rely on them as statements of representation of fact, but must satisfy themselves by inspection or otherwise as to their accuracy. No person in this firm's employment has the authority to make or give any representation or warranty in respect of the property.