



jt | JORGENSENTURNER



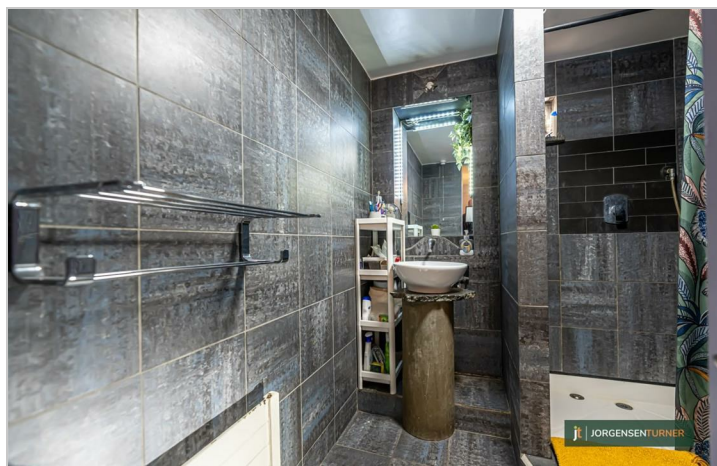
\*HEATING AND HOT  
WATER INCLUDED\* Birch  
£1,650 Per Month Street



1 1 1 C

jt

# \*HEATING AND HOT WATER INCLUDED\* Birch £1,650 Per Month Street



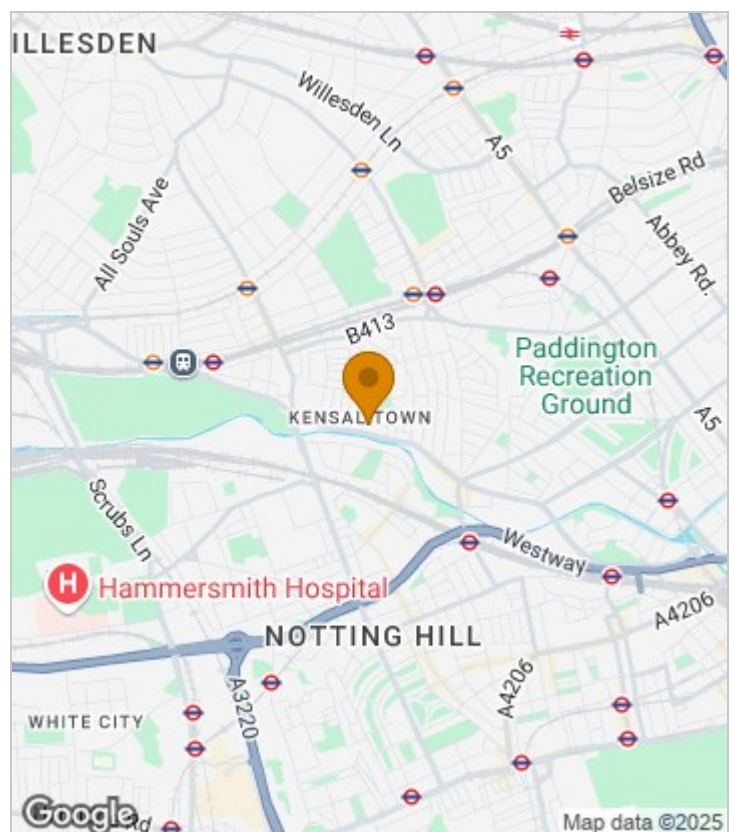
## Summary Description

Spacious one bedroom purpose built flat with small garden/outside space available from 11th of January. The property boasts one double bedroom with built in storage, fully fitted open plan kitchen leading onto large reception, fully fitted modern bathroom. Other features are double glazed windows, wooden floor throughout, great storage. The property comes unfurnished, rent includes HEATING AND HOT WATER.

Council tax band is C ( £865.03), EPC rating C, one week`s holding deposit is required, 5 weeks damage deposit is required.

Call Jorgensen Turner Estate Agent to get more information and to book a viewing.

## Area Map





# Floor Plan



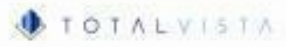
Ground Floor

For Identification Purposes Only. Not To Scale. © www.totalvista.uk 2017

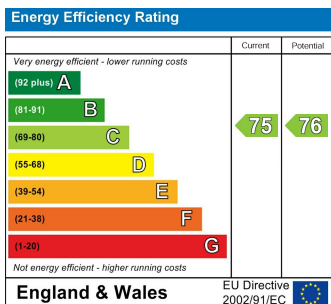


Birch House, W10

Approx. Gross Internal Area  
47.29 Sq M - 509 Sq Ft



## Energy Efficiency Graph



## Viewing

Please contact our Lettings QP Office on 0207 604 4040 if you wish to arrange a viewing appointment for this property or require further information.

- One bedroom flat
- Great storage
- Private patio
- Open plan
- Double glazed windows
- Heating and hot water included

For further information contact:

Lettings QP, 2a Brondesbury Road, London, NW6 6AS

Tel: 0207 604 4040 Email: [info@jorgensenturner.com](mailto:info@jorgensenturner.com) <https://www.jorgensenturner.com/>

### Disclaimer

These particulars, whilst believed to be accurate are set out as a general outline only for guidance and do not constitute any part of an offer or contract. Intending purchasers should not rely on them as statements of representation of fact, but must satisfy themselves by inspection or otherwise as to their accuracy. No person in this firm's employment has the authority to make or give any representation or warranty in respect of the property.

