



jt | JORGENSENTURNER



Scholars House, Kilburn  
Park, NW6

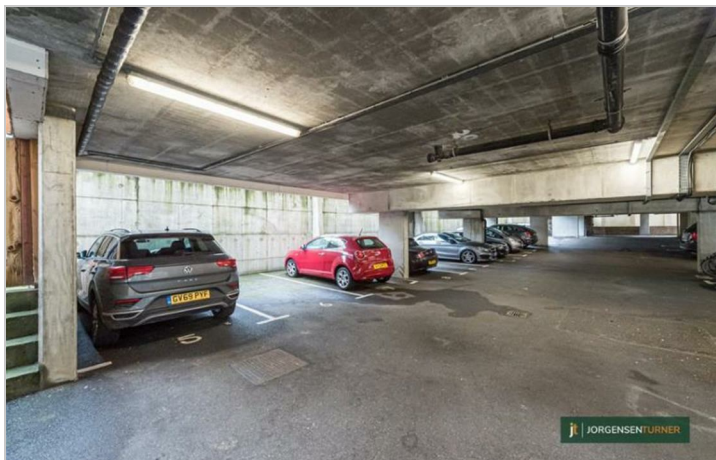
£2,495 Per Month



2 2 1

# Scholars House, Kilburn Park, NW6

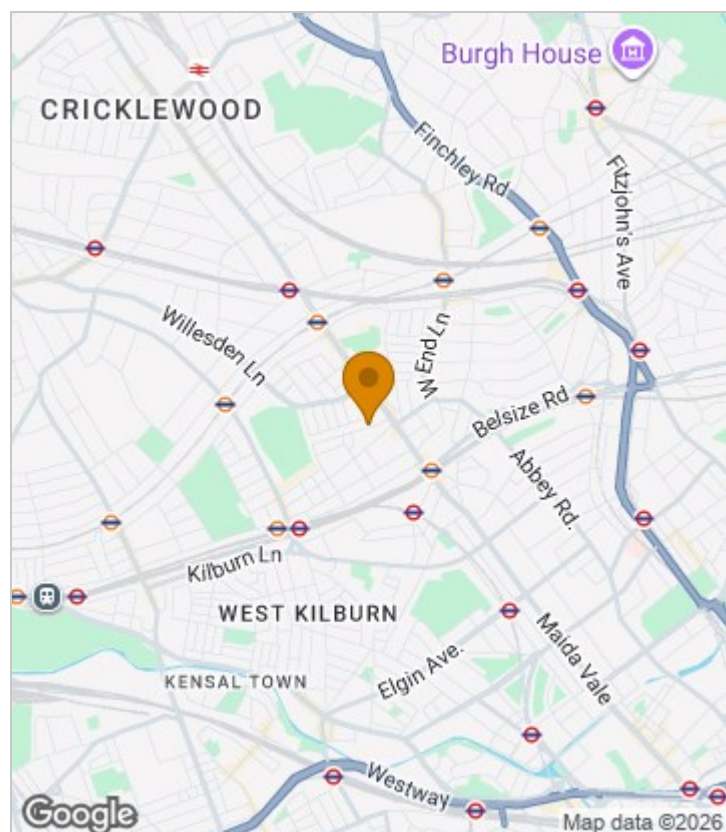
£2,495 Per Month



## Summary Description

This modern purpose built bright and airy two bedrooms two bathroom apartment is situated within convenient reach of Kilburn and Queens Park. Boasting a well-designed fully fitted open plan kitchen with integrated appliances leading onto a spacious pleasantly decorated reception with hardwood flooring throughout, creating a great living / social space. The property offers a two double bedrooms and two bathrooms all presented immaculately. As well as decorative positives, the property is fitted with double glazed windows throughout as well as gas central heating and video intercom security system. Cherry on the cake is lovely spacious and private terrace. Property is available from 12th of March. One week's holding deposit required, 5 weeks damage deposit required, council tax band D, EPC rating C

## Area Map

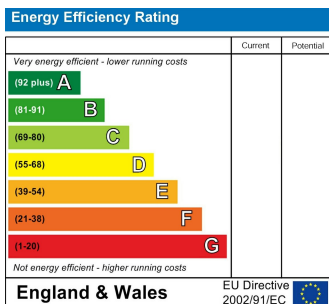




# Floor Plan



## Energy Efficiency Graph



## Viewing

Please contact our Lettings QP Office on 0207 604 4040 if you wish to arrange a viewing appointment for this property or require further information.

- Two bedroom flat
- Two bathroom
- Secure entrance
- Private Terrace
- Open Plan
- Off street parking

For further information contact:

Lettings QP, 2a Brondesbury Road, London, NW6 6AS

Tel: 0207 604 4040 Email: [info@jorgensenturner.com](mailto:info@jorgensenturner.com) <https://www.jorgensenturner.com/>

## Disclaimer

These particulars, whilst believed to be accurate are set out as a general outline only for guidance and do not constitute any part of an offer or contract. Intending purchasers should not rely on them as statements of representation of fact, but must satisfy themselves by inspection or otherwise as to their accuracy. No person in this firm's employment has the authority to make or give any representation or warranty in respect of the property.