



J | JORGENSENTURNER



Braithwaite Tower,
Paddington, W2

£2,200 Per Month



2 1 1 C

J |

Braithwaite Tower, Paddington, W2

£2,200 Per Month



Summary Description

A beautiful two-bedroom flat available now.

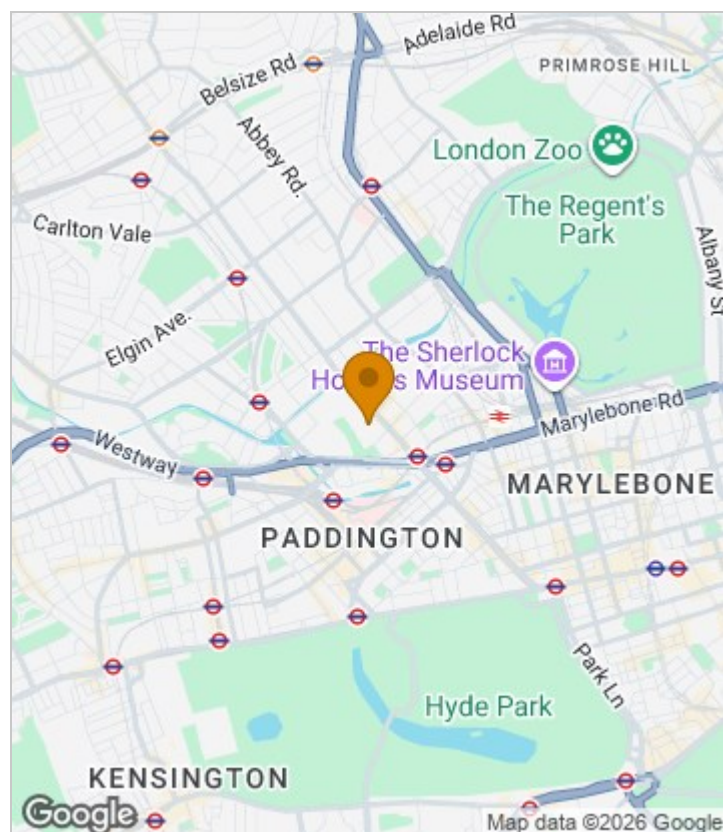
Located on the 18th floor, this newly redecorated property offers stunning panoramic views. The flat benefits from a brand-new fitted kitchen and bathroom, excellent storage throughout, a separate WC, and access to a private balcony. The building also features a lift for added convenience.

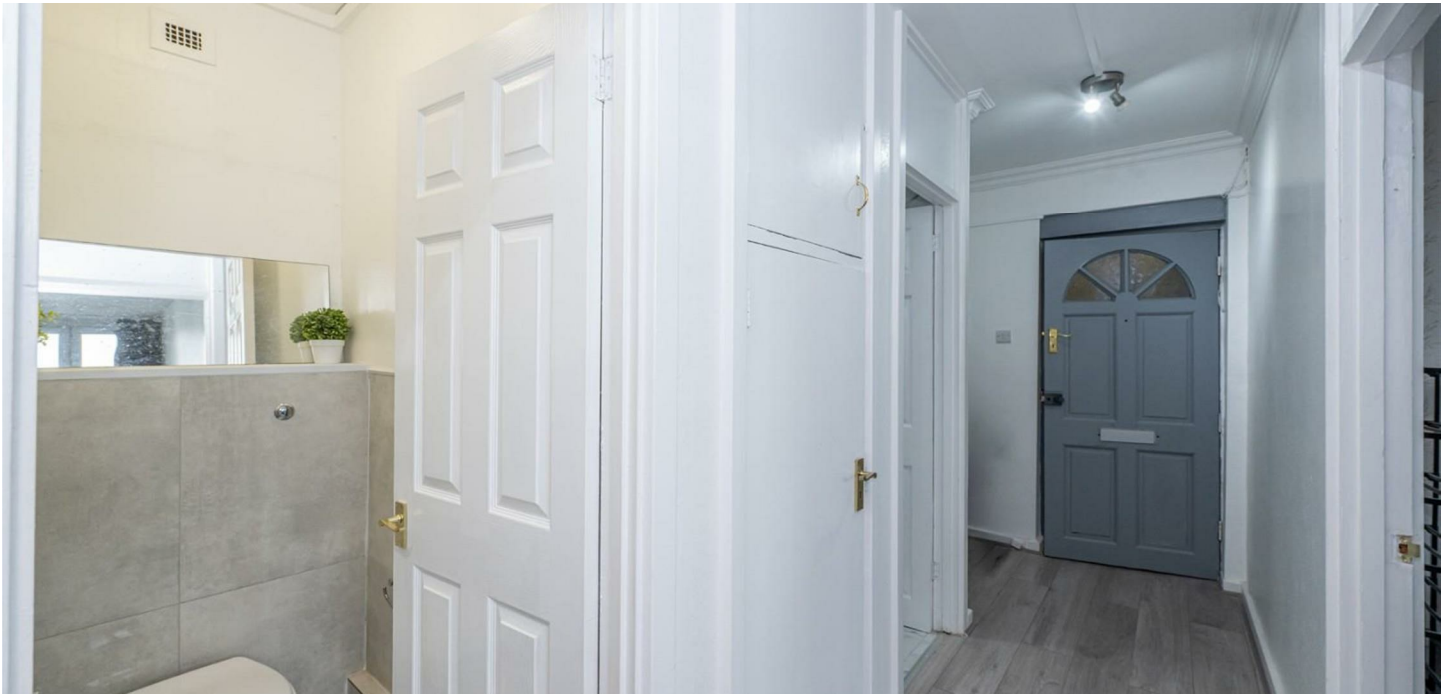
Ideally situated just 5 minutes from Edgware Station, the property provides excellent transport links, with Paddington reachable in 10 minutes and Marylebone in just 14 minutes.

EPC Rating C , Council Tax Band C , holding deposit one week`s rent, damage deposit required 5 weeks rent.

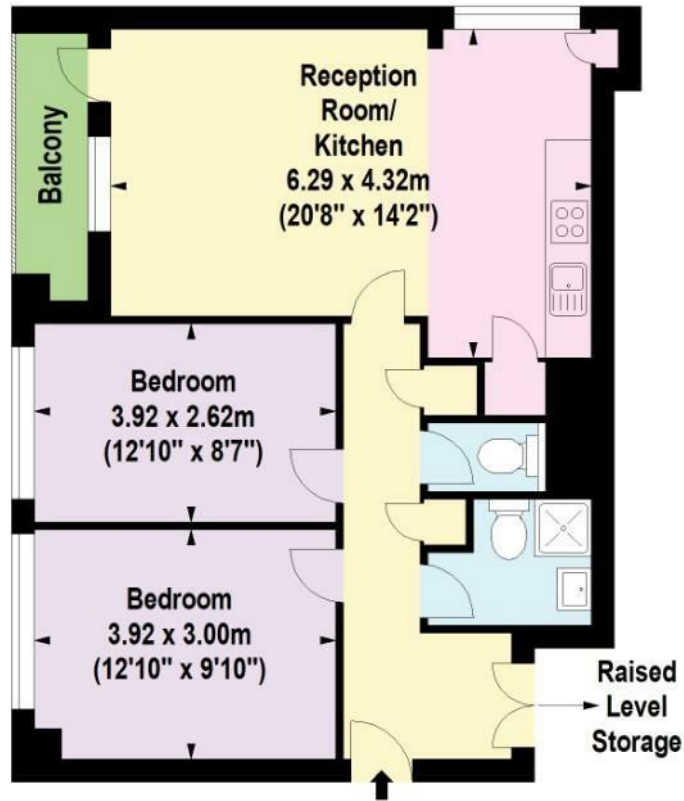
To arrange a viewing, please contact Jorgensen Turner Estate Agents.

Area Map





Floor Plan



Eighteenth Floor

For Identification Purposes Only. Not To Scale. © www.totalvista.uk 2026

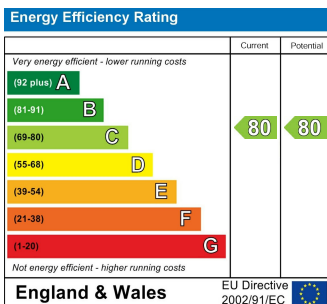


Braithwaite Tower,
Hall Place, W2

Approx. Gross Internal Area
62.99 Sq M - 678 Sq Ft



Energy Efficiency Graph



Viewing

Please contact our Lettings QP Office on 0207 604 4040 if you wish to arrange a viewing appointment for this property or require further information.

For further information contact:

Lettings QP, 2a Brondesbury Road, London, NW6 6AS

Tel: 0207 604 4040 Email: info@jorgensenturner.com <https://www.jorgensenturner.com/>

Disclaimer

These particulars, whilst believed to be accurate are set out as a general outline only for guidance and do not constitute any part of an offer or contract. Intending purchasers should not rely on them as statements of representation of fact, but must satisfy themselves by inspection or otherwise as to their accuracy. No person in this firm's employment has the authority to make or give any representation or warranty in respect of the property.