



Brondesbury Road,
Kilburn, London

£1,750 Per Month



Brondesbury Road, Kilburn, London

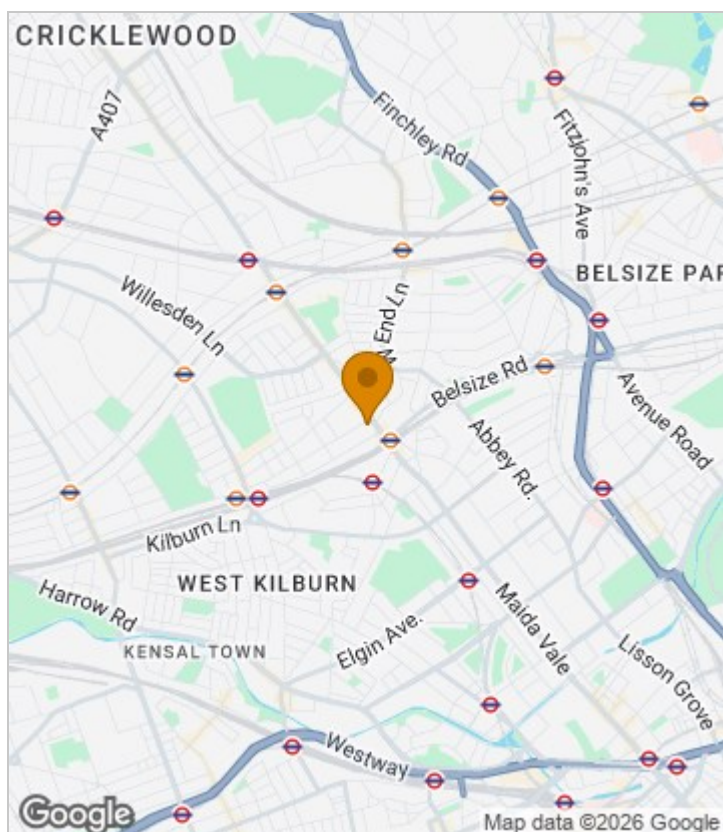
£1,750 Per Month



Summary Description

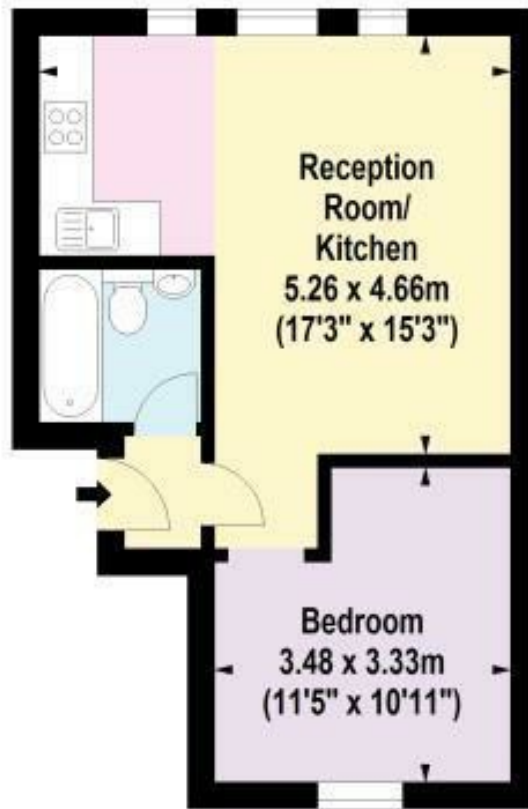
Extremely well kept this lovely, bright and modern one bedroom flat is available for single or a couple. Modern throughout, the property offers one double bedroom, spacious reception leading onto a fully fitted open plan kitchen and fully fitted bathroom. Other features are double glazed windows and laminate floor throughout. Area is really well connected therefore commuters can choose buses, Kilburn High road overground or Kilburn Park underground. Available from 7th of August however there is a lot of flexibility is someone would like to move in sooner. Please call Jorgensen Turner Estate Agents to book a viewing.

Area Map





Floor Plan



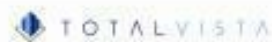
Third Floor

For Identification Purposes Only. Not To Scale. © www.totalvista.uk 2021

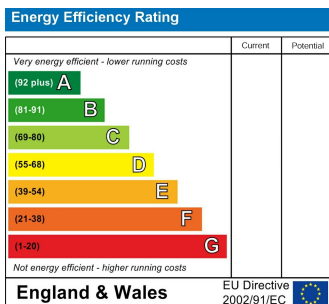


Brondesbury Road, NW6

Approx. Gross Internal Area
37.18 Sq M - 400 Sq Ft



Energy Efficiency Graph



Viewing

Please contact our Lettings QP Office on 0207 604 4040 if you wish to arrange a viewing appointment for this property or require further information.

For further information contact:

Lettings QP, 2a Brondesbury Road, London, NW6 6AS

Tel: 0207 604 4040 Email: info@jorgensenturner.com <https://www.jorgensenturner.com/>

Disclaimer

These particulars, whilst believed to be accurate are set out as a general outline only for guidance and do not constitute any part of an offer or contract. Intending purchasers should not rely on them as statements of representation of fact, but must satisfy themselves by inspection or otherwise as to their accuracy. No person in this firm's employment has the authority to make or give any representation or warranty in respect of the property.