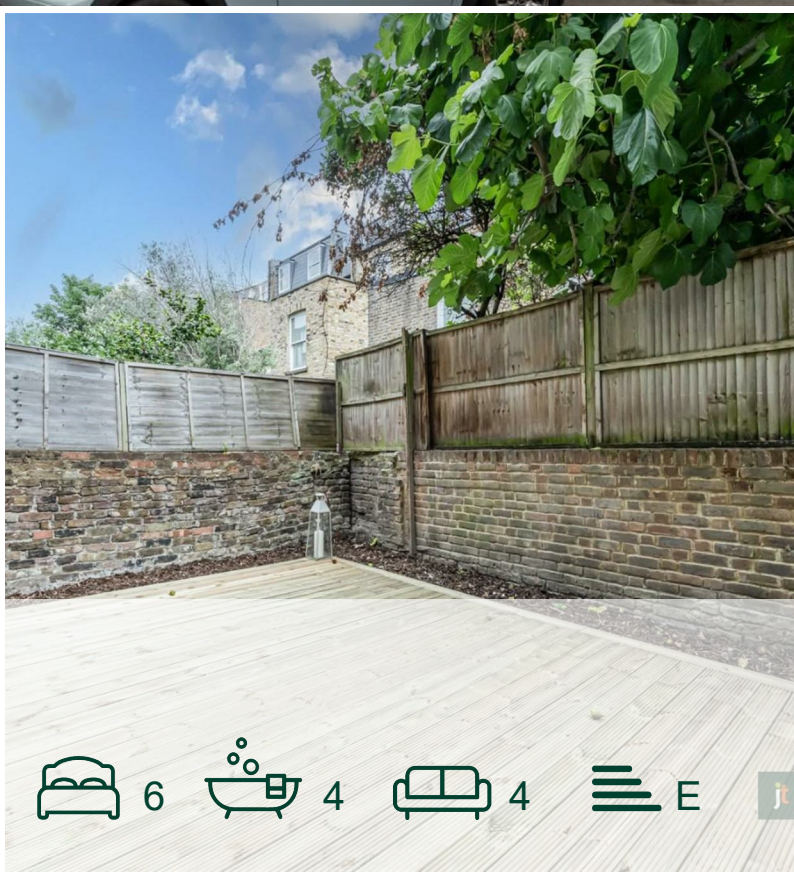




Hetley Road, Shepherd's
Bush, London, W12 8BA

Asking Price £1,950,000



6



4



4

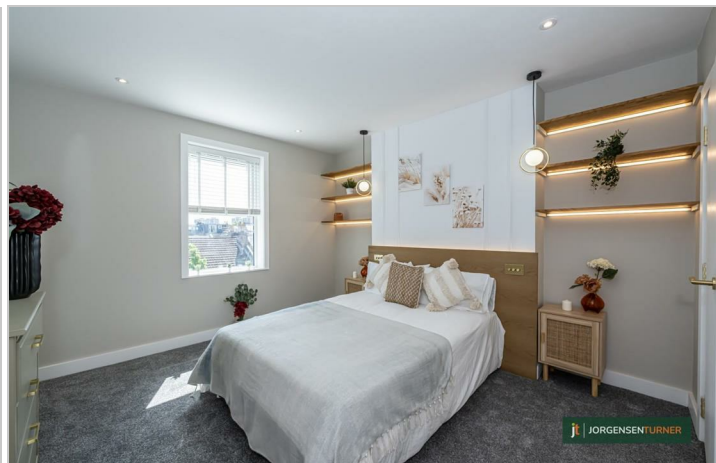


E



Hetley Road, Shepherds Bush, London, W12 8BA

Asking Price £1,950,000



Summary Description

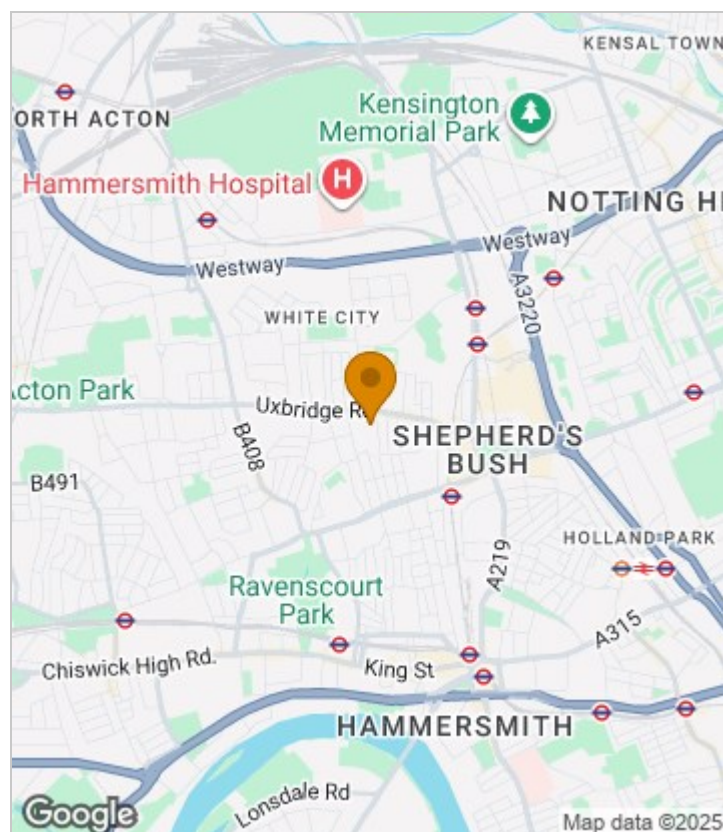
Hetley Road W12. APPROX 5% GROSS RETURN. A great opportunity to acquire this substantial freehold investment of just over 2000 sq ft, consisting of four high specification flats. The basement level offers a two bedroom garden apartment, the raised ground floor a two bedroom flat, the first floor a two bedroom flat and the second floor flat a one bedroom flat.

Potential return of £100,200pa (£8,350pcm) (Basement flat £2,300pcm, Raised ground floor, £2,100pcm, First floor flat £2,100pcm, Top floor flat £1,850pcm)

The location offers ultra-convenience for all the shops, bars and restaurants on the Uxbridge Road, the Westfield shopping centre, John Lewis and the infamous Soho House members club. The location is extremely well served transport wise with the Hammersmith and City and Central Line tubes, Shepherds Bush Over ground station and numerous bus routes in to Central London.

Freehold Investment. Hammersmith and Fulham.

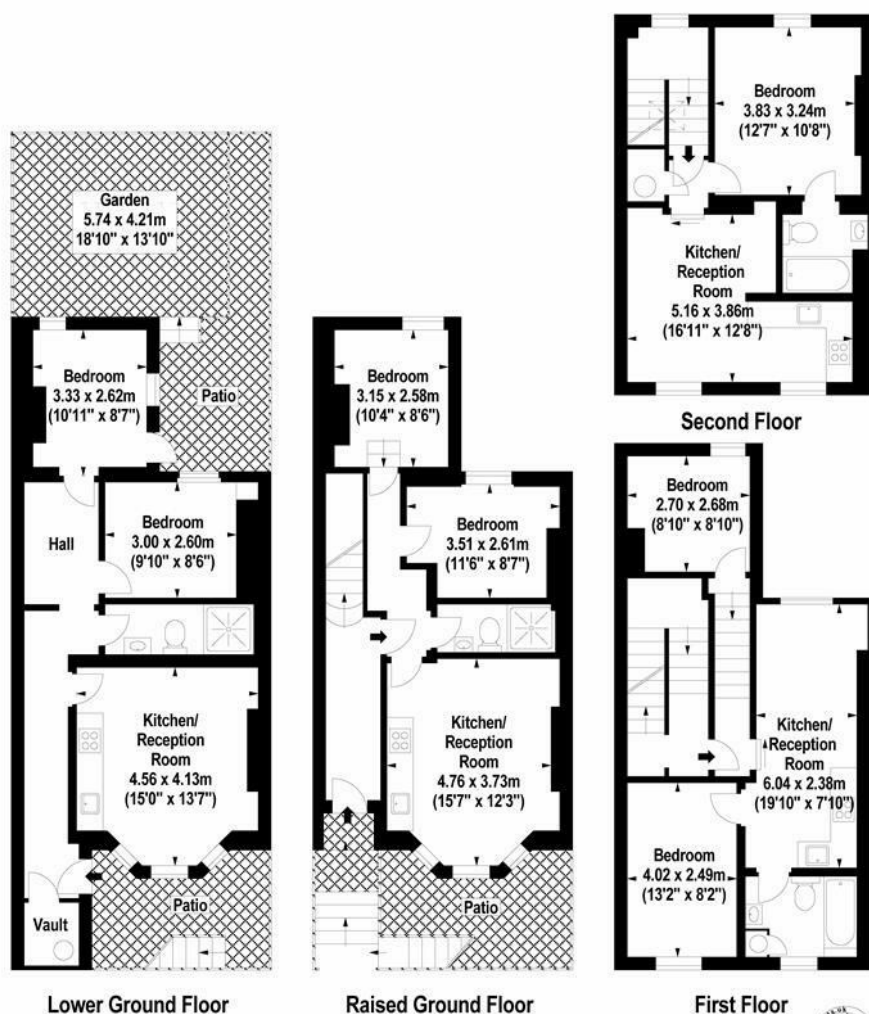
Area Map





Floor Plan

jt JORGENSEN TURNER



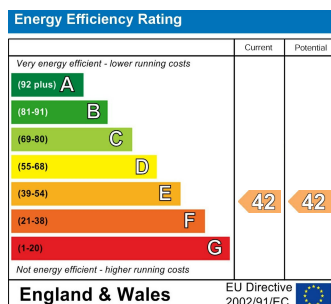
For Identification Purposes Only. Not To Scale. © www.totalvista.uk 2025

Hetley Road, W12

Approx. Gross Internal Area
205.22 Sq M - 2209 Sq Ft

TOTALVISTA

Energy Efficiency Graph



Viewing

Please contact our Sales SB Office on 0208 740 8740 if you wish to arrange a viewing appointment for this property or require further information.

- FREEHOLD INVESTMENT
- THREE TWO BEDROOMS FLATS
- HIGH SPECIFICATION FINISH
- APPROX 5% GROSS RETURN
- SHORT WALK TO WESTFIELD WHITE CITY
- FOUR REFURBISHED FLATS
- ONE ONE BEDROOM FLAT
- ANNUAL RENTAL RETURN OF £100,200PA
- CENTRAL SHEPHERDS BUSH

For further information contact:

Sales SB, 234 Uxbridge Road, Shepherd's Bush, London, W12 7JD

Tel: 0208 740 8740 Email: enquiries@jorgensenturner.com

<https://www.jorgensenturner.com/>

Disclaimer

These particulars, whilst believed to be accurate are set out as a general outline only for guidance and do not constitute any part of an offer or contract. Intending purchasers should not rely on them as statements of representation of fact, but must satisfy themselves by inspection or otherwise as to their accuracy. No person in this firm's employment has the authority to make or give any representation or warranty in respect of the property.

